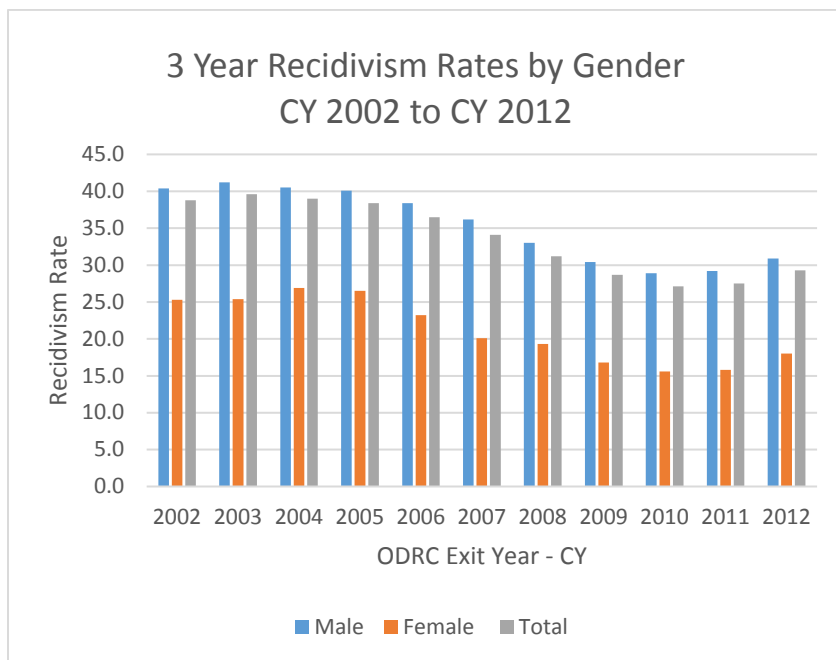


The overall 3-year recidivism rate for inmates released from Ohio prisons in 2012 is 29.26%, up 1.75 percentage points from the 3-year rate for 2011 releases (27.51%). Table 1 shows the rate, by gender, for the years 2002-2012. Both males and females experienced increases in the rate of recidivism, though the magnitude of the increase was greater among females. The female rate increased 2.15 points (15.81% to 17.96%), while the increase among males was 1.66 points (29.21% to 30.87%).

Table 1.



Scope of Report

This report describes recidivism rates for all inmates released from an incarceration status in Ohio in CY 2012. This includes releases to post-release control (PRC), releases at the end of stated term (EST), judicial releases, expiration of indeterminate sentences, and discretionary releases onto parole. Rates are shown by gender, type of return, release type, age at release, major offense category, and the original county of commitment.

Measuring Recidivism

Recidivism, as used in this report, is defined as a return to incarceration in an Ohio prison for conviction of a new criminal offense or a technical violation of the conditions of post-release supervision. The recidivism rate refers to the percent of inmates released in a calendar year who are returned for either of these reasons within three years of the date of their release. Transitional Control releases are not tracked until the end date of their stated term, placement onto post-release control, or date of judicial release.

Table 2 shows the number of released inmates on which annual recidivism rates are calculated (for more detail, see section above). In CY 2012, the release cohort consisted of 21,125 inmates, 54% of whom were released to supervision. The percent placed on supervision post release has exceeded 50% since 2012 after dropping to a recent low point of just over 40% in 2010 (see Table 3).

Table 2.

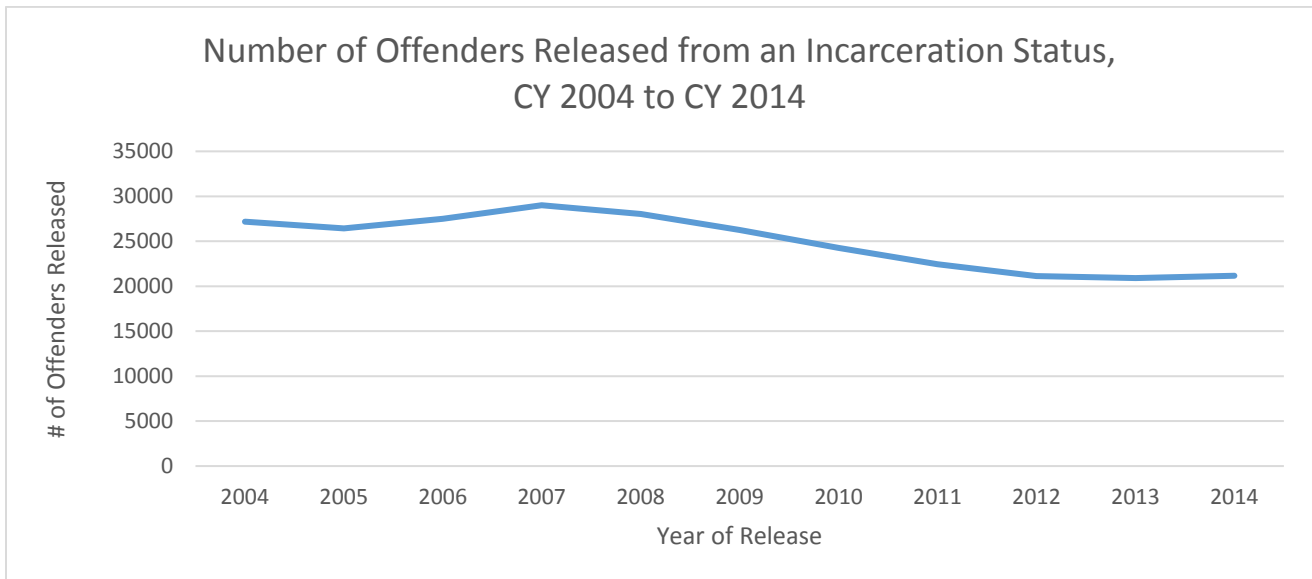


Table 3.

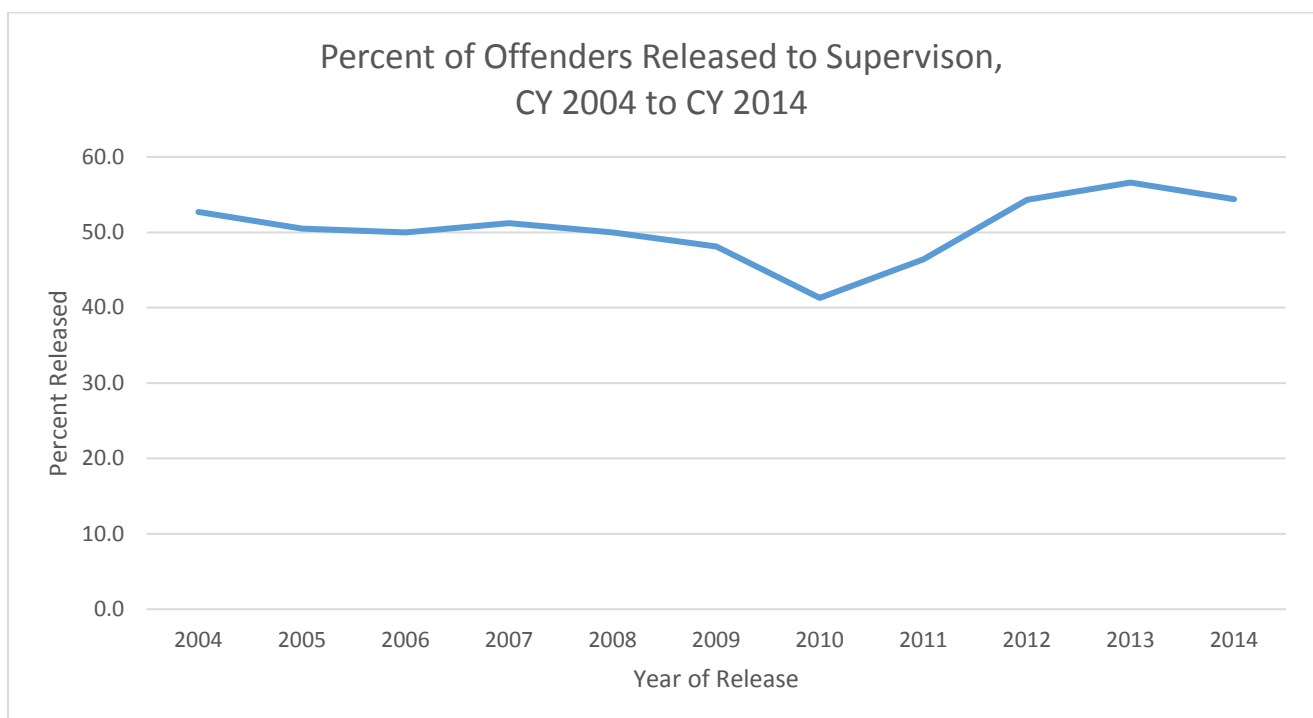


Table 4.

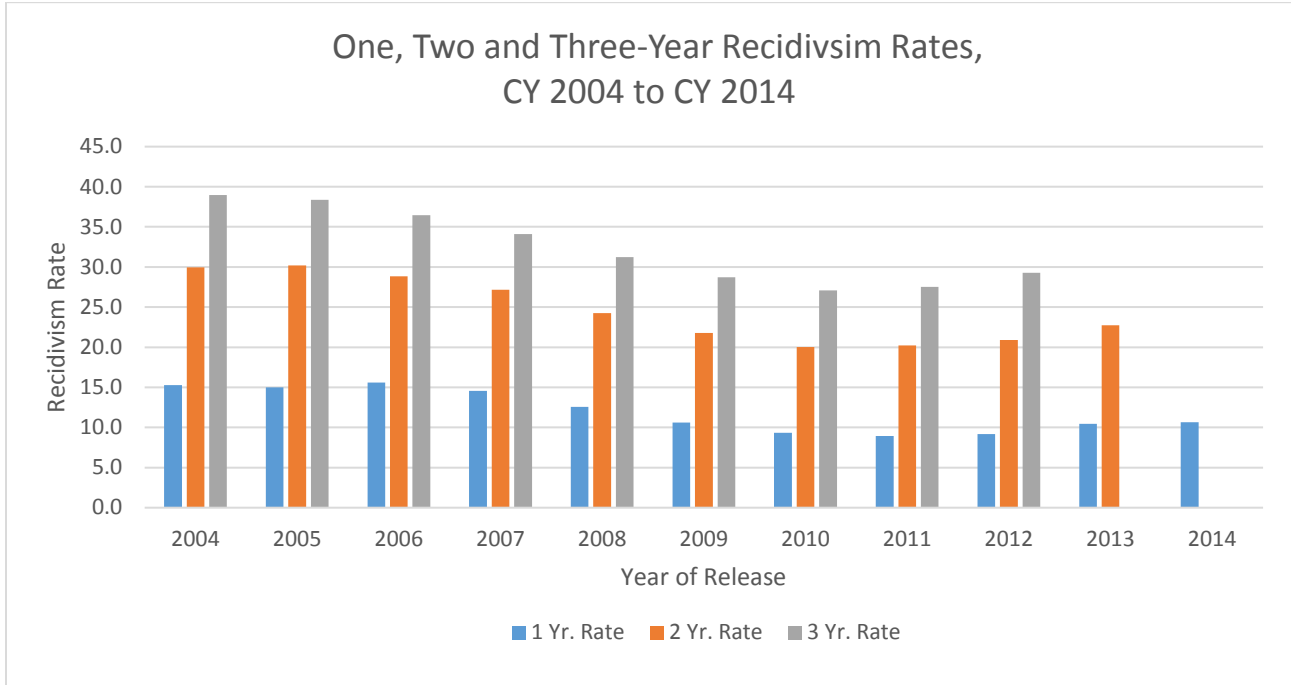
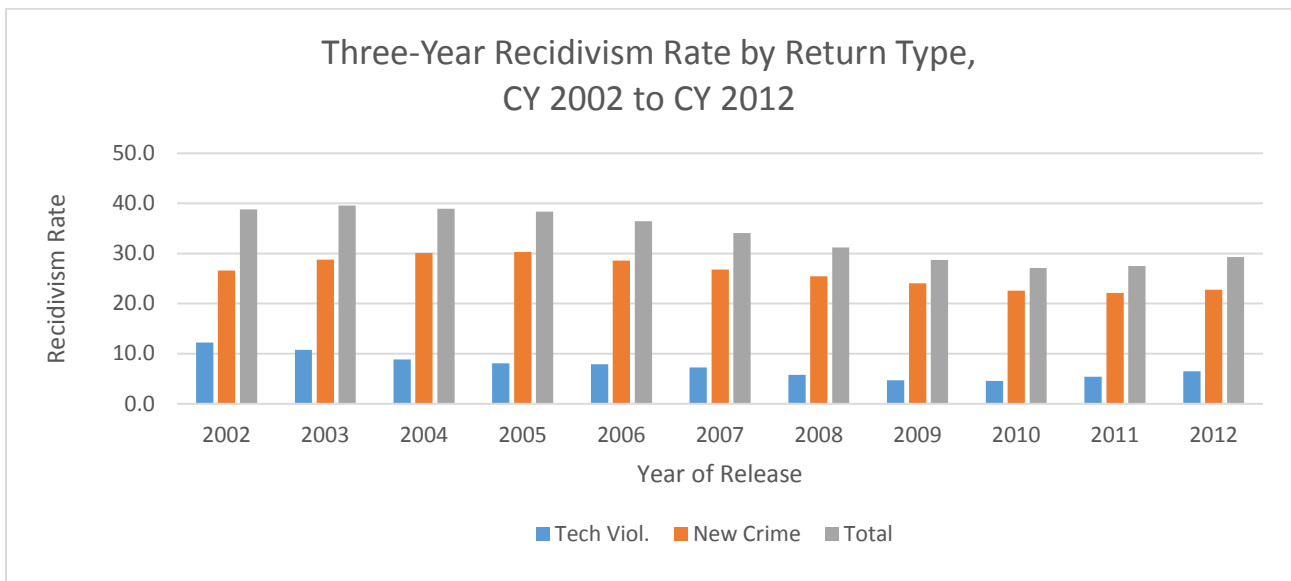


Table 5.

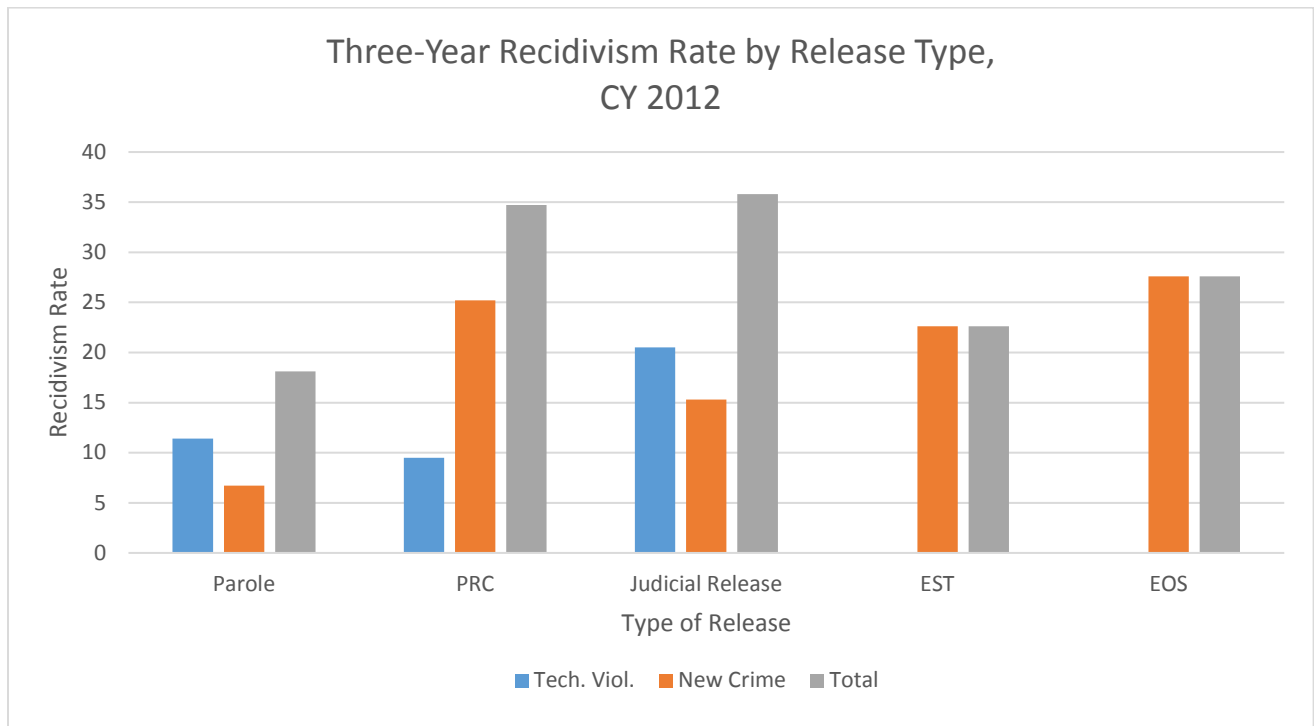


In Table 4, the recidivism rates are broken down by 1, 2, and 3-year follow-up periods for the 2004-2014 release cohorts. All three rates increased slightly in 2012, though the change in the 1-year rates in 2013-2014 was nearly flat, increasing 0.2 percentage points (10.46% to 10.66%).

Three-year recidivism rates for the 2002-2012 period, by type of return, are shown in Table 5. Returns for technical violations of supervision rules increased 1.1 percentage points in 2012, while the rate of return for new crimes increased only two-thirds of a percentage point. This is the second consecutive increase in the rate of technical returns following steady declines since 2002; however, in compositional terms, nearly 80% of the total population returned over three years were new-crime recidivists.

Table 6 shows the overall 3-year rate for 2012 broken down by type of release. Comparing the two main release types, the new crime rate among PRC releases was roughly 2.5 percentage points higher than the same rate among those released at end of stated term (EST) without supervision (25.15% vs. 22.67%). The EST rate declined 1.3 points since 2011, while the PRC new-crime rate increased nearly 3 points (not shown), accounting for the bulk of the increase in the overall rate. Recidivism among judicial releases also went up in 2012, but the aggregate impact on the total rate is lessened by the relatively small number of releases in this category.

Table 6.



In Tables 7, 8, and 9 the 2012 rates are shown by age, offense category, and county of commitment, respectively. Those under age 25 at the time of release had the highest rates of both technical and new-crime returns compared to any other age group (Table 7). Property offenders had recidivism rates exceeding 30%, the highest among any of the major offense categories (Table 8).

Table 7.

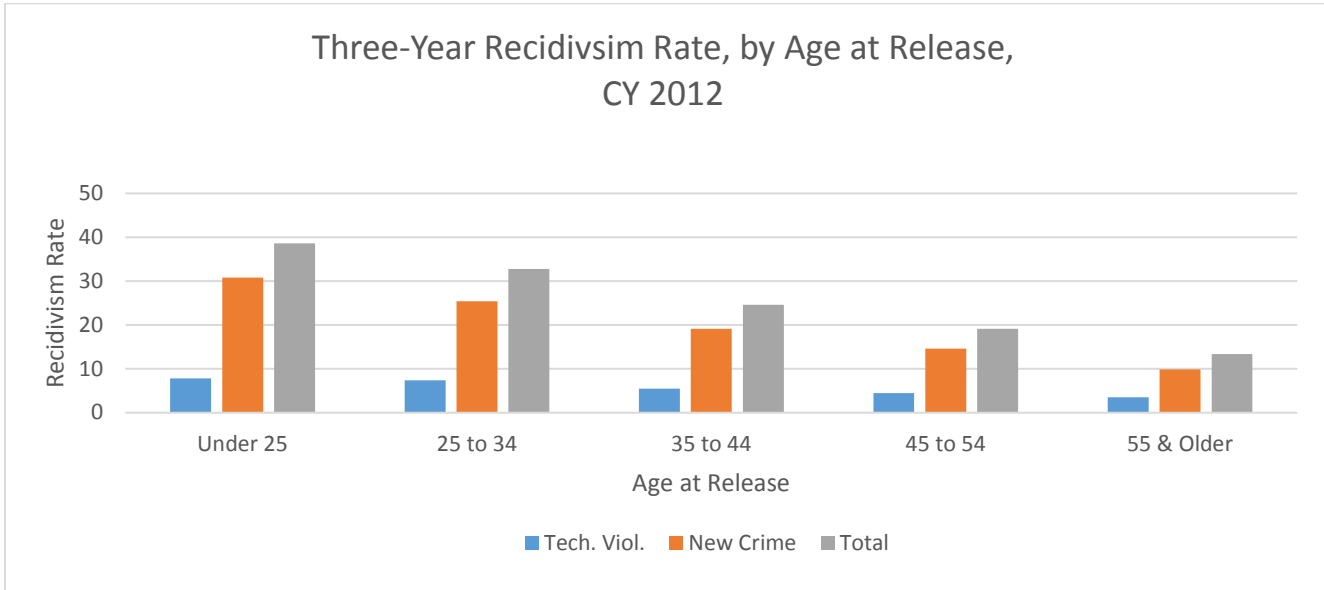


Table 8.

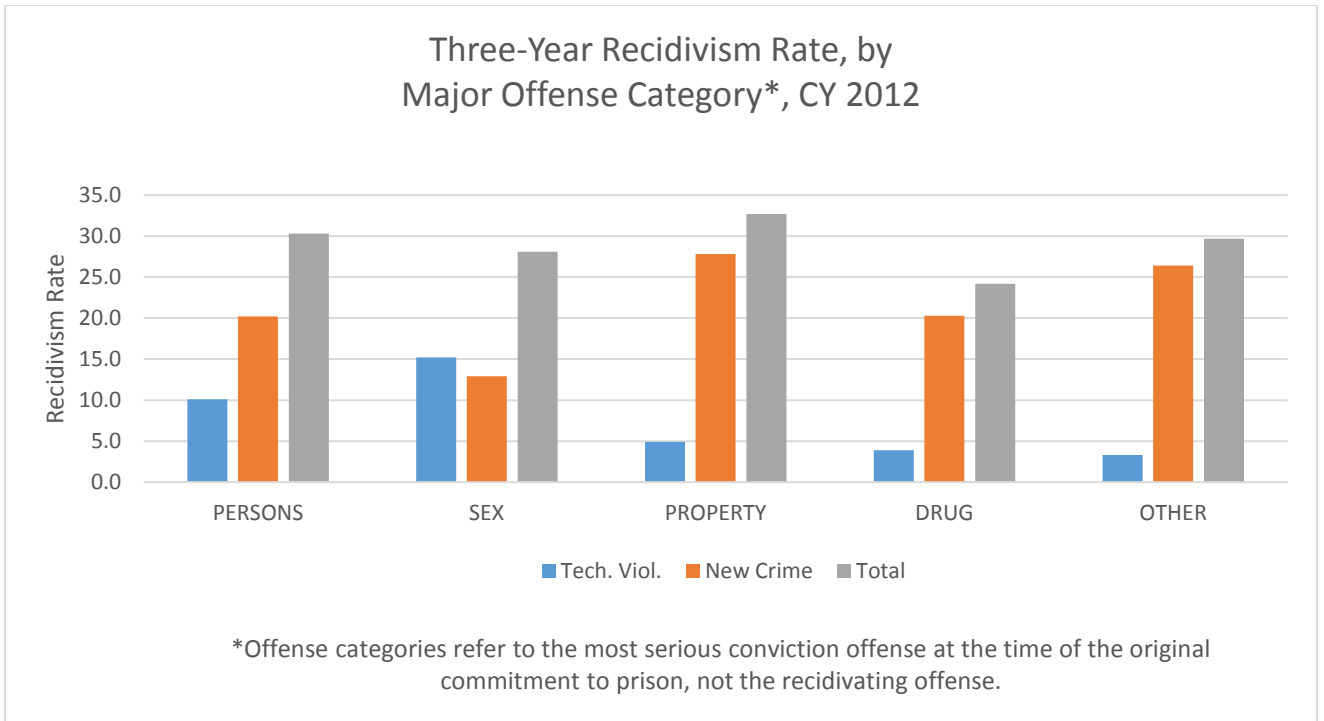


Table 9. County of Commitment	2012 DRC Exits - 3 Year Recidivism Rate						Total	2012 Total	2011 Total	Percentage
	No Recidivism		Technical Violation		New Crime			Recidivism Rate	Recidivism Rate	Points Change
	N	%	N	%	N	%	N			
ADAMS	62	75.6%	5	6.1%	15	18.3%	82	24.4%	31.3%	-6.9%
ALLEN	110	72.8%	11	7.3%	30	19.9%	151	27.2%	28.3%	-1.1%
ASHLAND	42	77.8%	3	5.6%	9	16.7%	54	22.2%	35.9%	-13.7%
ASHTABULA	74	75.5%	4	4.1%	20	20.4%	98	24.5%	25.8%	-1.3%
ATHENS	85	63.0%	19	14.1%	31	23.0%	135	37.0%	26.4%	10.6%
AUGLAIZE	59	74.7%	10	12.7%	10	12.7%	79	25.3%	28.0%	-2.7%
BELMONT	20	58.8%	5	14.7%	9	26.5%	34	41.2%	18.8%	22.4%
BROWN	99	72.3%	6	4.4%	32	23.4%	137	27.7%	19.5%	8.2%
BUTLER	394	69.6%	36	6.4%	136	24.0%	566	30.4%	25.2%	5.2%
CARROLL	17	63.0%	2	7.4%	8	29.6%	27	37.0%	16.7%	20.3%
CHAMPAIGN	60	75.0%	0	0.0%	20	25.0%	80	25.0%	23.7%	1.3%
CLARK	232	69.5%	10	3.0%	92	27.5%	334	30.5%	28.6%	1.9%
CLERMONT	282	75.0%	37	9.8%	57	15.2%	376	25.0%	31.1%	-6.1%
CLINTON	89	70.6%	6	4.8%	31	24.6%	126	29.4%	34.2%	-4.8%
COLUMBIANA	87	85.3%	0	0.0%	15	14.7%	102	14.7%	18.7%	-4.0%
COSHOCTON	43	68.3%	5	7.9%	15	23.8%	63	31.7%	33.3%	-1.6%
CRAWFORD	46	48.9%	11	11.7%	37	39.4%	94	51.1%	28.9%	22.2%
CUYAHOGA	2655	71.5%	200	5.4%	856	23.1%	3711	28.5%	26.5%	2.0%
DARKE	22	78.6%	2	7.1%	4	14.3%	28	21.4%	22.4%	-1.0%
DEFIANCE	75	64.7%	17	14.7%	24	20.7%	116	35.3%	22.2%	13.1%
DELAWARE	122	75.3%	6	3.7%	34	21.0%	162	24.7%	25.0%	-0.3%
ERIE	123	62.1%	25	12.6%	50	25.3%	198	37.9%	36.5%	1.4%
FAIRFIELD	124	61.4%	27	13.4%	51	25.2%	202	38.6%	35.8%	2.8%
FAYETTE	63	61.2%	5	4.9%	35	34.0%	103	38.8%	28.8%	10.0%
FRANKLIN	1258	71.7%	155	8.8%	342	19.5%	1755	28.3%	25.8%	2.5%
FULTON	47	71.2%	3	4.5%	16	24.2%	66	28.8%	16.7%	12.1%
GALLIA	52	76.5%	4	5.9%	12	17.6%	68	23.5%	23.2%	0.3%
GEAUGA	21	77.8%	0	0.0%	6	22.2%	27	22.2%	21.6%	0.6%
GREENE	205	69.7%	24	8.2%	65	22.1%	294	30.3%	23.8%	6.5%
GUERNSEY	41	74.5%	4	7.3%	10	18.2%	55	25.5%	34.7%	-9.2%
HAMILTON	1410	72.8%	85	4.4%	442	22.8%	1937	27.2%	26.2%	1.0%
HANCOCK	76	76.8%	7	7.1%	16	16.2%	99	23.2%	26.3%	-3.1%
HARDIN	23	51.1%	10	22.2%	12	26.7%	45	48.9%	35.7%	13.2%
HARRISON	12	75.0%	0	0.0%	4	25.0%	16	25.0%	35.3%	-10.3%
HENRY	32	82.1%	2	5.1%	5	12.8%	39	17.9%	21.9%	-4.0%
HIGHLAND	70	65.4%	7	6.5%	30	28.0%	107	34.6%	35.4%	-0.8%
HOCKING	58	63.0%	7	7.6%	27	29.3%	92	37.0%	36.4%	0.6%
HOLMES	33	80.5%	1	2.4%	7	17.1%	41	19.5%	16.7%	2.8%
HURON	52	68.4%	2	2.6%	22	28.9%	76	31.6%	47.0%	-15.4%
JACKSON	41	67.2%	6	9.8%	14	23.0%	61	32.8%	27.3%	5.5%
JEFFERSON	57	65.5%	6	6.9%	24	27.6%	87	34.5%	30.2%	4.3%
KNOX	50	61.0%	3	3.7%	29	35.4%	82	39.0%	27.4%	11.6%
LAKE	183	70.1%	9	3.4%	69	26.4%	261	29.9%	22.8%	7.1%
LAWRENCE	154	77.4%	17	8.5%	28	14.1%	199	22.6%	28.0%	-5.4%
LICKING	226	71.7%	24	7.6%	65	20.6%	315	28.3%	23.6%	4.7%
LOGAN	38	64.4%	0	0.0%	21	35.6%	59	35.6%	24.2%	11.4%
LORAIN	303	70.5%	36	8.4%	91	21.2%	430	29.5%	29.2%	0.3%
LUCAS	485	73.5%	47	7.1%	128	19.4%	660	26.5%	22.5%	4.0%
MADISON	53	81.5%	1	1.5%	11	16.9%	65	18.5%	19.2%	-0.7%

County of Commitment	2012 DRC Exits - 3 Year Recidivism Rate						Total	2012 Total	2011 Total	Percentage
	No Recidivism		Technical Violation		New Crime			Recidivism Rate	Recidivism Rate	Points Change
	N	%	N	%	N	%	N			
MAHONING	274	73.5%	15	4.0%	84	22.5%	373	26.5%	25.9%	0.6%
MARION	142	62.0%	12	5.2%	75	32.8%	229	38.0%	34.4%	3.6%
MEDINA	158	74.5%	8	3.8%	46	21.7%	212	25.5%	25.6%	-0.1%
MEIGS	47	69.1%	9	13.2%	12	17.6%	68	30.9%	25.8%	5.1%
MERCER	19	70.4%	3	11.1%	5	18.5%	27	29.6%	34.4%	-4.8%
MIAMI	134	66.7%	12	6.0%	55	27.4%	201	33.3%	29.9%	3.4%
MONROE	20	80.0%	0	0.0%	5	20.0%	25	20.0%	36.8%	-16.8%
MONTGOMERY	786	68.3%	83	7.2%	281	24.4%	1150	31.7%	28.7%	3.0%
MORGAN	7	63.6%	2	18.2%	2	18.2%	11	36.4%	40.0%	-3.6%
MORROW	27	73.0%	3	8.1%	7	18.9%	37	27.0%	17.0%	10.0%
MUSKINGUM	126	75.0%	7	4.2%	35	20.8%	168	25.0%	22.9%	2.1%
NOBLE	4	57.1%	0	0.0%	3	42.9%	7	42.9%	18.2%	24.7%
OTTAWA	9	75.0%	0	0.0%	3	25.0%	12	25.0%	25.9%	-0.9%
PAULDING	22	66.7%	2	6.1%	9	27.3%	33	33.3%	18.2%	15.1%
PERRY	44	75.9%	3	5.2%	11	19.0%	58	24.1%	30.2%	-6.1%
PICKAWAY	95	61.3%	12	7.7%	48	31.0%	155	38.7%	28.5%	10.2%
PIKE	31	75.6%	2	4.9%	8	19.5%	41	24.4%	28.9%	-4.5%
PORTAGE	107	78.7%	5	3.7%	24	17.6%	136	21.3%	25.3%	-4.0%
PREBLE	33	70.2%	5	10.6%	9	19.1%	47	29.8%	26.4%	3.4%
PUTNAM	15	71.4%	2	9.5%	4	19.0%	21	28.6%	26.4%	2.2%
RICHLAND	195	61.5%	21	6.6%	101	31.9%	317	38.5%	37.8%	0.7%
ROSS	137	68.8%	22	11.1%	40	20.1%	199	31.2%	33.3%	-2.1%
SANDUSKY	69	80.2%	2	2.3%	15	17.4%	86	19.8%	20.0%	-0.2%
SCIOTO	214	72.1%	28	9.4%	55	18.5%	297	27.9%	26.6%	1.3%
SENECA	70	70.0%	9	9.0%	21	21.0%	100	30.0%	35.2%	-5.2%
SHELBY	88	66.2%	6	4.5%	39	29.3%	133	33.8%	33.6%	0.2%
STARK	460	69.4%	48	7.2%	155	23.4%	663	30.6%	30.8%	-0.2%
SUMMIT	760	66.7%	76	6.7%	304	26.7%	1140	33.3%	30.6%	2.7%
TRUMBULL	209	73.3%	6	2.1%	70	24.6%	285	26.7%	23.0%	3.7%
TUSCARAWAS	42	77.8%	3	5.6%	9	16.7%	54	22.2%	32.8%	-10.6%
UNION	49	81.7%	0	0.0%	11	18.3%	60	18.3%	23.2%	-4.9%
VAN WERT	42	76.4%	1	1.8%	12	21.8%	55	23.6%	24.1%	-0.5%
VINTON	18	75.0%	2	8.3%	4	16.7%	24	25.0%	36.4%	-11.4%
WARREN	187	71.4%	20	7.6%	55	21.0%	262	28.6%	29.0%	-0.4%
WASHINGTON	60	75.0%	7	8.8%	13	16.3%	80	25.0%	27.8%	-2.8%
WAYNE	51	72.9%	6	8.6%	13	18.6%	70	27.1%	30.7%	-3.6%
WILLIAMS	76	75.2%	6	5.9%	19	18.8%	101	24.8%	24.1%	0.7%
WOOD	133	79.6%	4	2.4%	30	18.0%	167	20.4%	26.4%	-6.0%
WYANDOT	17	70.8%	1	4.2%	6	25.0%	24	29.2%	33.3%	-4.1%
OTHER	3	100.0%	0	0.0%	0	0.0%	3	0.0%	0.0%	0.0%
TOTAL	14944	70.7%	1365	6.5%	4816	22.8%	21125	29.3%	27.5%	1.8%

*Based on the original county of commitment. Released offenders may or may not return to reside in the same county of commitment.

**Offenders with multiple conviction counties are listed in each County Category. For the TOTAL line offenders are counted a single time; therefore the totals are not sums of the columns above.