



Ohio Department of Rehabilitation and Correction

1050 Freeway Drive North
Columbus, Ohio 43229

Bob Taft, Governor

www.drc.state.oh.us

Reginald A. Wilkinson, Director

TO: ALL CONCERNED
FROM: CORETTA PETTWAY & SENARATH DASSANAYAKA, RESEARCHERS
 BUREAU OF RESEARCH
 OFFICE OF POLICY
DATE: 3/12/2004 - Revised Numbers on Pages 4 and 6 As of This Date
SUBJECT: FISCAL YEAR 2003 SUMMARY OF INSTITUTION STATISTICS

TOTAL COURT COMMITMENTS TO THE OHIO DEPARTMENT OF REHABILITATION AND CORRECTION:

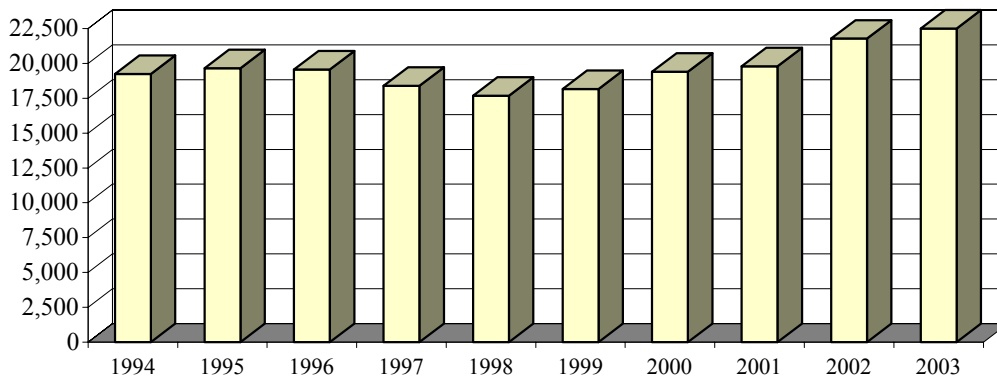
OFFICIAL COMMITMENT TOTALS			
CRC RECEPTION - MALE	10,724	MALE INTAKE	20,112
LORCI RECEPTION - MALE	9,142	FEMALE INTAKE	2,537
ORW RECEPTION - FEMALE	2,537	TOTAL	22,649
RECEIVED AT OTHER INSTITUTIONS	246		
TOTAL	22,649		

SENATE BILL 2 COMMITMENTS*		
	MOST SERIOUS OFFENSE IS A SB2 OFFENSE	MOST SERIOUS OFFENSE IS A PRE-SB2 OFFENSE
MALE INTAKE	19,906	206
FEMALE INTAKE	2,502	35
TOTAL	22,408	241

* THESE TOTALS ARE INCLUDED IN THE OFFICIAL COMMITMENT TOTALS.

COURT COMMITMENTS TO THE DEPARTMENT FY 1994-2003									
1994	1995	1996	1997	1998	1999	2000	2001	2002	2003
19,243	19,669	19,566	18,404	17,681	18,165	19,418	19,801	21,787	22,649

FIGURE 1. COURT COMMITMENTS TO THE DEPARTMENT FY 1994-2003



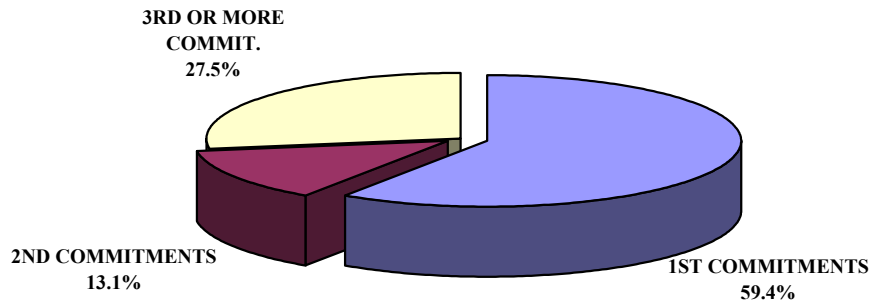
NUMBER OF COMMITMENTS TO THE DEPARTMENT								
FY 2003*	CRC MALE	LORCI MALE	MALE N	MALE %	ORW FEMALE	FEMALE %	TOTAL N	TOTAL %
1ST COMMITMENTS	5,874	4,447	10,321	51.3%	1673	65.9%	11,994	53.0%
2ND COMMITMENTS	2,454	2,206	2,206	11.0%	438	17.3%	2,644	11.7%
3RD OR MORE COMMIT.	2,507	2,624	5,131	25.5%	426	16.8%	5,557	24.5%
TOTAL	10,835	9,277	20,112	100.0%	2,537	100.0%	22,649	100.0%

NUMBER OF COMMITMENTS TO THE DEPARTMENT								
FY 2002*	CRC MALE	LORCI MALE	MALE N	MALE %	ORW FEMALE	FEMALE %	TOTAL N	TOTAL %
1ST COMMITMENTS	5,662	4,454	10,116	52.6%	1,681	66.3%	11,797	54.1%
2ND COMMITMENTS	2,213	2,144	4,357	22.6%	413	16.3%	4,770	21.9%
3RD OR MORE COMMIT.	2,229	2,548	4,777	24.8%	443	17.5%	5,220	24.0%
TOTAL	10,104	9,146	19,250	100.0%	2,537	100.0%	21,787	100.0%

NUMBER OF COMMITMENTS TO THE DEPARTMENT								
FY 2001*	CRC MALE	LORCI MALE	MALE N	MALE %	ORW FEMALE	FEMALE %	TOTAL N	TOTAL %
1ST COMMITMENTS	5,166	4,282	9,448	54.3%	1,511	63.2%	10,959	55.3%
2ND COMMITMENTS	1,952	1,903	3,855	22.1%	443	18.5%	4,298	21.7%
3RD OR MORE COMMIT.	2,008	2,101	4,109	23.6%	435	18.2%	4,544	22.9%
TOTAL	9,126	8,286	17,412	100.0%	2,389	100.0%	19,801	100.0%

* THIS TABLE IS PRODUCED FROM A DOTS SUMMARY OF PRIOR OHIO COMMITMENTS.

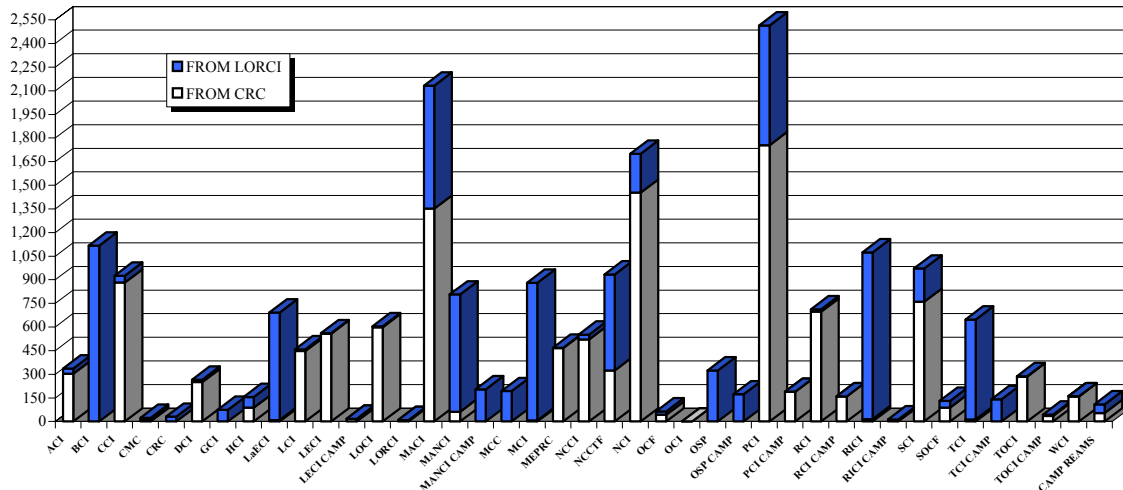
FIGURE 2. DISTRIBUTION OF COURT COMMITMENTS FY 2003



INMATE TRANSFERS FROM MALE RECEPTION CENTERS

	FROM CRC RECEPTION TO:				FROM LORCI RECEPTION TO:			
	2003	2002	2001	2000	2003	2002	2001	2000
ACI	303	255	85	165	34	21	22	31
BCI	0	2	2	1	1,116	1,104	1,184	990
CCI	882	406	546	271	43	41	12	9
CMC	12	19	1	9	11	4	3	8
CRC	0	0	0	0	31	9	22	28
DCI	250	288	228	196	16	0	0	0
GCI	0	59	10	15	75	106	39	44
HCI	88	46	58	45	68	40	46	77
LaECI	9	14	34	0	683	702	643	547
LCI	447	768	674	560	11	39	5	100
LECI	558	368	246	369	3	10	3	21
LECI CAMP	18	122	162	0	0	0	0	0
LOCI	599	616	803	729	5	5	1	28
LORCI	9	10	12	25	0	0	41	21
MACI	1,351	1,252	1,247	1,219	781	652	703	907
MANCI	63	71	23	8	744	418	263	220
MANCI CAMP	0	4	0	0	204	396	329	157
MCC	0	0	1	1	193	362	386	435
MCI	8	3	7	1	873	643	623	540
MEPRC	467	573	440	488	1	32	30	0
NCCI	521	359	310	261	31	203	57	169
NCCTF	325	424	426	281	609	762	665	246
NCI	1,453	1,235	1,096	1,069	246	7	113	255
OCF	43	22	28	31	21	30	15	25
OCI	0	245	558	740	0	59	85	102
OSP	2	0	0	27	322	68	53	78
OSP CAMP	0	0	0	0	173	352	271	218
PCI	1,754	1,567	1,434	1,497	760	1,014	1,038	880
PCI CAMP	189	69	20	7	0	0	0	0
RCI	697	391	334	468	15	18	28	50
RCI CAMP	160	176	163	40	0	0	0	0
RICI	15	16	12	0	1,059	1,131	1,065	1,155
RICI CAMP	0	0	11	11	13	15	12	266
SCI	760	680	459	776	211	114	124	213
SOCF	89	17	39	52	43	41	52	37
TCI	14	5	0	1	634	293	228	200
TCI CAMP	0	0	12	26	141	458	477	436
TOCI	286	185	204	0	2	11	77	0
TOCI CAMP	36	112	72	0	8	8	58	0
WCI	160	131	106	39	1	7	17	2
CAMP REAMS	54	123	196	247	55	191	98	185
TOTAL	11,622	10,633	10,059	9,675	9,236	9,366	8,888	8,680

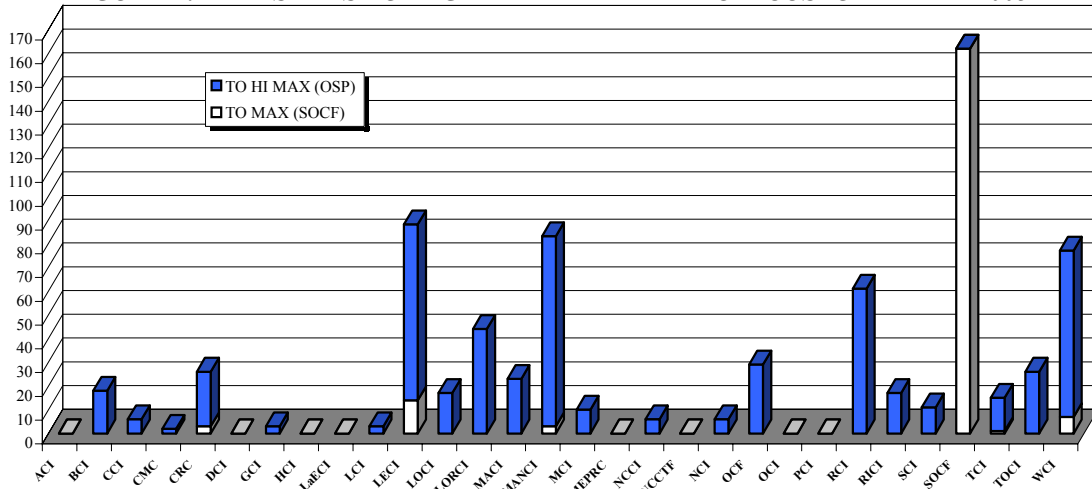
FIGURE 3. INMATES RECEIVED FROM CRC AND LORCI FY 2003



DISCIPLINARY AND ADMINISTRATIVE TRANSFERS

	FROM LESSER CUSTODY TO:				FROM HIGHER TO LESSER CUSTODY				
	LEVEL 5 (HI MAX) (OSP)		LEVEL 4 (MAX) (SOCF)		LEVEL 5 (HI MAX) (OSP)		LEVEL 4 (MAX) (SOCF)		
	2003	2002	2003	2002	2003	2002	2003	2002	2001
	ACI	0	0	0	15	0	0	1	1
BCI	0	0	18	16	0	0	11	7	0
CCI	0	0	6	6	1	0	0	1	0
CMC	0	0	2	0	1	1	3	2	2
CRC	3	0	23	17	0	3	10	9	2
DCI	0	0	0	0	0	0	0	0	0
GCI	0	0	3	5	0	0	0	1	0
HCI	0	0	0	0	0	0	0	0	1
LaECI	0	2	0	0	0	0	1	1	0
LCI	0	0	3	10	14	0	0	0	0
LECI	14	3	74	51	0	4	93	52	75
LOCI	0	0	17	6	0	0	3	0	0
LORCI	0	0	44	43	0	0	0	11	0
MACI	0	0	23	11	5	0	5	0	3
MANCI	3	7	80	75	0	3	90	65	45
MCI	0	0	10	14	0	0	2	2	8
MEPRC	0	0	0	0	0	0	0	0	0
NCCI	0	3	6	11	0	0	2	2	0
NCCTF	0	0	0	0	0	0	0	0	0
NCI	0	3	6	7	0	2	2	4	0
OCF	0	0	29	20	0	0	26	20	21
OCI	0	0	0	14	0	0	0	1	0
PCI	0	0	0	15	0	0	0	1	0
RCI	0	9	61	56	3	0	176	198	195
RCI	0	1	17	21	2	0	1	6	0
SCI	0	4	11	8	0	2	1	1	5
SOCF	162	28	0	0	126	113	0	0	0
TCI	1	0	14	13	1	0	45	54	24
TOCI	0	2	26	4	1	1	41	20	3
WCI	7	2	70	47	11	2	97	51	65
TOTAL	190	64	543	485	165	131	610	510	449

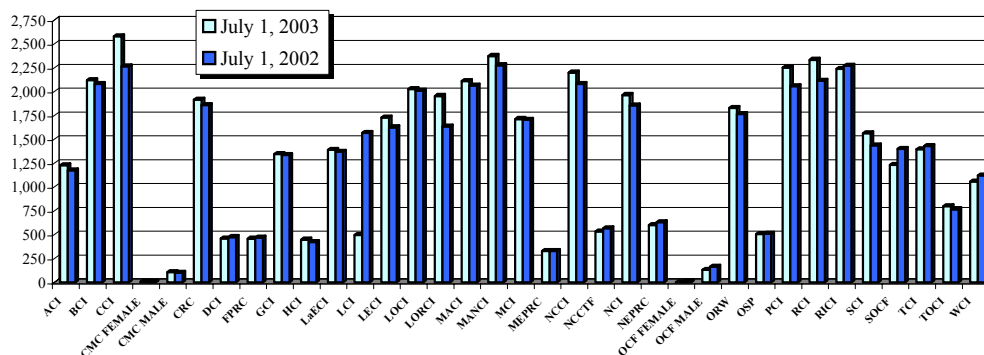
FIGURE 4. TRANSFERS TO HIGH MAX AND MAXIMUM CUSTODY IN FY 2003



END OF FISCAL YEAR INSTITUTIONAL POPULATION COUNT:

INSTITUTION POPULATION TREND (PREVIOUS YEAR COMPARISON)		7/1/2003	7/1/2002	DIFFERENCE	
<i>ACI</i>	(Allen Correctional Institution)	1,227	1,173	54	4.6%
<i>BCI</i>	(Belmont Correctional Institution)	2,120	2,080	40	1.9%
<i>CCI</i>	(Chillicothe Correctional Institution)	2,579	2,264	315	13.9%
<i>CMC MALE</i>	(Correctional Medical Center)	106	101	5	5.0%
<i>CRC</i>	(Correctional Reception Center)	1,916	1,858	58	3.1%
<i>DCI</i>	(Dayton Correctional Institution)	459	474	-15	-3.2%
<i>GCI</i>	(Grafton Correctional Institution)	1,346	1,334	12	0.9%
<i>HCI</i>	(Hocking Correctional Institution)	447	423	24	5.7%
<i>LaECI</i>	(Lake Erie Correctional Institution)	1,388	1,369	19	1.4%
<i>LCI</i>	(Lima Correctional Institution)	496	1,566	-1,070	-68.3%
<i>LECI</i>	(Lebanon Correctional Institution)	1,728	1,625	103	6.3%
<i>LOCI</i>	(London Correctional Institution)	2,027	2,009	18	0.9%
<i>LORCI</i>	(Lorain Correctional Institution)	1,954	1,632	322	19.7%
<i>MACI</i>	(Madison Correctional Institution)	2,110	2,063	47	2.3%
<i>MANCI</i>	(Mansfield Correctional Institution)	2,373	2,276	97	4.3%
<i>MCI</i>	(Marion Correctional Institution)	1,712	1,705	7	0.4%
<i>MEPRC</i>	(Montgomery Education & Pre-Release Center)	328	327	1	0.3%
<i>NCCI</i>	(North Central Correctional Institution)	2,199	2,080	119	5.7%
<i>NCCTF</i>	(North Coast Correctional Treatment Facility)	533	567	-34	-6.0%
<i>NCI</i>	(Noble Correctional Institution)	1,964	1,854	110	5.9%
<i>OCF MALE</i>	(Oakwood Correctional Facility)	131	165	-34	-20.6%
<i>OSP</i>	(Ohio State Penitentiary)	505	508	-3	-0.6%
<i>PCI</i>	(Pickaway Correctional Institution)	2,251	2,057	194	9.4%
<i>RCI</i>	(Ross Correctional Institution)	2,333	2,114	219	10.4%
<i>RICI</i>	(Richland Correctional Institution)	2,238	2,271	-33	-1.5%
<i>SCI</i>	(Southeastern Correctional Institution)	1,563	1,434	129	9.0%
<i>SOCF</i>	(Southern Ohio Correctional Facility)	1,230	1,399	-169	-12.1%
<i>TCI</i>	(Trumbull Correctional Institution)	1,396	1,429	-33	-2.3%
<i>TOCI</i>	(Toledo Correctional Institution)	797	766	31	4.0%
<i>WCI</i>	(Warren Correctional Institution)	1,056	1,120	-64	-5.7%
MALE TOTAL		42,512	42,043	469	1.1%
CMC FEMALE		6	2	4	200.0%
<i>FPRC</i>	(Franklin Pre-Release Center)	457	468	-11	-2.4%
<i>NEPRC</i>	(Northeast Pre-Release Center)	600	631	-31	-4.9%
<i>OCF FEMALE</i>	(Oakwood Correctional Facility)	0	8	-8	-100.0%
<i>ORW</i>	(Ohio Reformatory for Women)	1,827	1,765	62	3.5%
FEMALE TOTAL		2,890	2,874	16	0.6%
COMBINED MALE / FEMALE TOTAL		45,402	44,917	485	1.1%

FIGURE 5. COMPARISON OF INSTITUTION POPULATION COUNT ON 7/1/03 and 7/1/02



RELEASES AND RETURNS:

INSTITUTIONAL STATISTICS					
	FY 2003 FEMALE	FY 2003 MALE	FY 2003 TOTAL	FY 2002 TOTAL	FY 2001 TOTAL
RELEASED BY:					
SUSPENDED SENTENCE	4	45	49	74	153
VACATED SENTENCE	0	8	8	20	26
REGULAR PAROLE	140	4,060	4,200	5,185	5,479
SHOCK PAROLE	2	1	3	7	54
JUDICIAL RELEASE	341	1,218	1,559	1,659	1,561
POST RELEASE CONTROL	719	8,607	9,326	8,810	8,107
TRANSITIONAL CONTROL	200	1,120	1,320	1,304	1,228
EXPIRATION OF SENTENCE	35	915	950	1,219	1,236
END OF STATED TERM	1,310	7,586	8,896	7,419	7,218
APPEALS BOND	5	16	21	40	27
ESCAPES (from the Office of Prisons)	0	1	1	2	1
DEATHS (from the Bureau of Medical Services)	3	98	101	127	121
TOTAL RELEASED	2,759	23,675	26,434	25,866	25,211

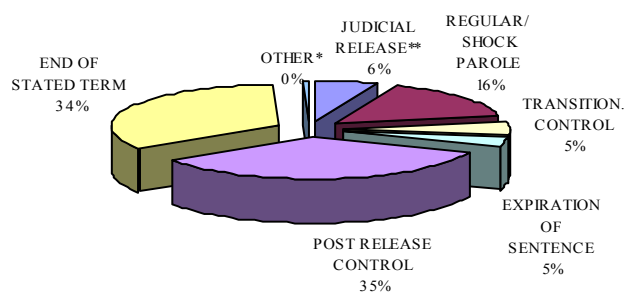
RETURNED BY:					
PAROLE VIOLATION (TECH.) ¹	29	1,044	1,073	978	1,782
JUDICIAL RELEASE VIOLATION	97	577	674	597	629
POST RELEASE CONTROL VIOLATION ¹	107	1,721	1,828	1,942	1,842
TRANSITIONAL CONTROL VIOLATION	25	121	146	207	91
REACTIVATED SUSPENDED SENTENCE	5	33	38	98	154
ESCAPES RETURNED	0	1	1	2	1
APPEALS BOND	2	4	6	17	15
TOTAL RETURNED	265	3,501	3,766	3,841	4,514

¹ Numbers from DOTS. PRC and Parole offenders being held at reception prior to a violation hearing have caused errors in the monthly report totals, so monthly totals are not summed for this report.

PAROLE VIOLATORS RECOMMISSIONED²	16	728	744
PRC FELONY VIOLATOR²	62	1,338	1,400

² PVR and PRC Felony Violator numbers from DOTS.

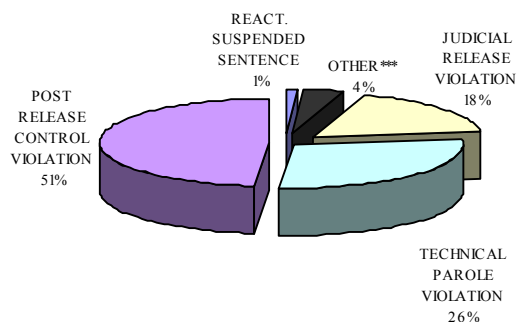
FIGURE 6. RELEASE TYPES FY 2003



*Other includes the following releases: vacated sentence, appeals bond, escapes and deaths.

**Includes offenders released on suspended sentence.

FIGURE 7. RETURN TYPES FY 2003



***Other includes returns for the following: transitional control violation, return from appeals bond and captured escapes.

ESCAPES AND RATES OF ESCAPE

	2003	2002	2001	2000	1999	1998	1997	1996	1995
ACI	0	0	0	0	0	2	0	0	0
BCI	0	0	0	0	0	0	1	0	0
CCI	0	0	0	0	2	0	0	0	1
CMC	0	0	0	0	0	0	0	0	0
CRC	0	0	0	0	0	0	0	0	0
DCI	0	0	0	0	0	0	0	0	0
FPRC	0	0	0	0	0	0	0	0	0
GCI	1	0	1	0	1	1	2	0	1
HCI	0	0	0	0	0	0	0	0	0
LaECI	0	0	0	0	0	0	0	0	0
LCI	0	0	0	0	0	0	0	0	0
LECI	0	1	0	0	0	0	0	0	0
LOCI	0	0	0	1	0	2	0	2	0
LORCI	0	0	0	0	0	0	0	0	0
MACI	0	0	0	0	1	0	1	2	0
MANCI	0	0	0	0	1	2	5	6	3
MCI	0	0	0	0	0	1	1	0	1
MEPRC	0	0	0	0	0	0	0	0	0
NEPRC	0	0	0	0	0	0	1	1	0
NCCI	0	0	0	0	0	0	0	0	0
NCCTF	0	0	0	0	0	0	0	0	0
NCI	0	0	0	0	0	0	0	0	0
OCF	0	0	0	0	0	0	0	0	0
OCI	0	0	0	0	0	0	0	0	1
ORW	0	0	0	0	0	0	0	0	0
OSP	0	0	0	0	0	0	0	0	0
PCI	0	0	0	1	1	1	2	2	1
RCI	0	0	0	0	1	2	1	5	1
RICI	0	0	0	0	0	0	0	0	0
SCI	0	1	0	0	1	2	2	1	0
SOCF	0	0	0	0	0	0	0	0	2
TCI	0	0	0	0	0	0	1	4	0
TOCI	0	0	0	0	0	0	0	0	0
WCI	0	0	0	0	0	0	0	0	0
TOTAL	1	2	1	2	8	13	17	23	11
AVG. SYSTEM POPULATION FOR YEAR	45,175	44,980	45,609	46,690	47,988	47,899	46,031	44,359	41,919
RATE OF ESCAPE PER 1000 INMATES	0.02	0.04	0.02	0.04	0.17	0.27	0.37	0.52	0.26

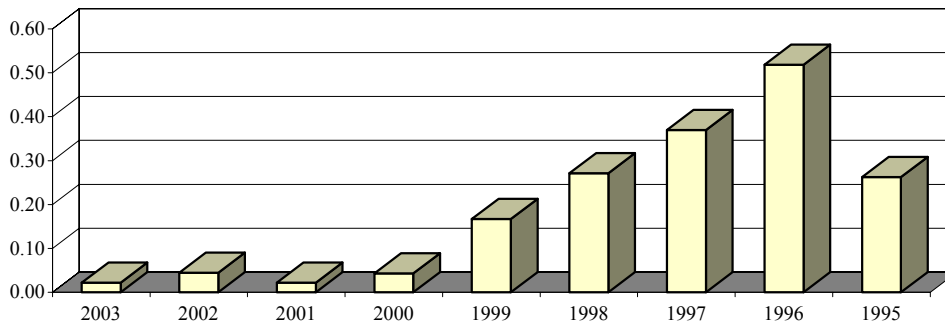
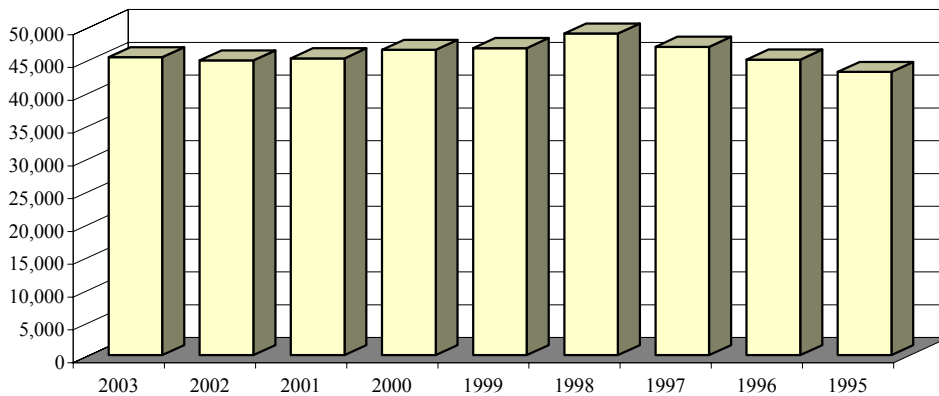


FIGURE 8. RATES OF ESCAPE FY 2003-1995

INSTITUTION POPULATION TRENDS:

END OF THE YEAR INSTITUTIONAL POPULATION TREND FOR JULY 1, 2003 THROUGH JULY 1, 1995									
	2003	2002	2001	2000	1999	1998	1997	1996	1995
ACI	1,227	1,173	1,152	1,328	1,401	1,421	1,375	1,294	1,404
BCI	2,120	2,080	2,040	1,901	2,423	2,650	2,355	2,252	283
CCI	2,579	2,264	2,246	2,195	2,448	2,854	2,628	2,582	2,620
CMC MALE	106	101	99	146	132	146	135	153	147
CMC FEMALE	6	2	5	2	3	5	5	8	5
CRC	1,916	1,858	1,558	1,733	1,667	2,304	2,155	2,142	2,240
DCI	459	474	472	473	474	483	486	485	484
FPRC	457	468	468	438	459	474	479	490	471
GCI	1,346	1,334	1,342	1,450	1,593	1,699	1,635	1,621	1,575
HCI/HCF	447	423	408	417	436	447	433	440	435
LaECI	1,388	1,369	1,362	999	0	0	0	0	0
LCI	496	1,566	1,485	1,549	1,650	1,937	1,990	2,125	1,926
LECI	1,728	1,625	1,680	1,875	2,192	2,307	2,225	2,103	2,188
LOCI	2,027	2,009	2,069	1,915	1,857	1,946	1,904	2,350	2,311
LORCI	1,954	1,632	1,443	1,548	1,676	2,116	2,041	1,993	2,071
MACI	2,110	2,063	2,009	2,093	2,471	2,601	2,483	2,552	2,589
MANCI	2,373	2,276	2,109	2,319	2,671	2,696	2,655	2,588	2,230
MCI	1,712	1,705	1,837	1,782	1,911	2,222	2,144	2,087	2,224
MEPRC	328	327	262	328	322	347	331	349	342
NEPRC	600	631	495	590	583	634	638	631	655
NCCI	2,199	2,080	1,955	2,145	2,280	2,312	2,226	2,252	2,262
NCCTF	533	567	554	549	0	0	0	0	0
NCI	1,964	1,854	1,850	2,014	2,054	2,397	2,128	0	0
OCF MALE	131	165	175	130	156	141	150	145	211
OCF FEMALE	0	8	5	8	9	5	0	0	0
OCI	0	0	1,743	1,920	1,935	2,038	2,056	2,242	2,430
ORW	1,827	1,765	1,726	1,807	1,802	1,780	1,716	1,673	1,531
ORW MALES	0	0	0	0	0	0	0	0	190
OSP	505	508	558	610	616	285	0	0	0
PCI	2,251	2,057	1,815	1,903	1,920	1,959	1,950	1,956	1,906
RCI	2,333	2,114	2,224	2,359	2,508	2,751	2,771	2,731	2,828
RICI	2,238	2,271	2,043	2,183	1,238	0	0	0	0
SCI	1,563	1,434	1,332	1,718	1,677	1,769	1,743	1,755	1,797
SOCF	1,230	1,399	1,438	1,409	1,436	1,481	1,410	1,176	1,009
TCI	1,396	1,429	1,395	1,411	1,429	1,457	1,442	1,389	1,272
TOCI	797	766	696	0	0	0	0	0	0
WCI	1,056	1,120	1,194	1,290	1,377	1,365	1,306	1,472	1,522
TOTAL	45,402	44,917	45,244	46,537	46,806	49,029	46,995	45,036	43,158

FIGURE 9. INSTITUTION POPULATION TREND FY 2003-1995



END OF THE YEAR INSTITUTIONAL POPULATION TREND FOR JULY 1, 1994 THROUGH JULY 1, 1986

	1994	1993	1992	1991	1990	1989	1988	1987	1986
ACI	1,417	1,171	1,111	979	917	753	644	59	0
CCI	2,791	2,794	2,625	2,456	2,325	2,064	1,864	2,975	2,935
CLEV. P.R.	0	0	0	0	0	0	49	41	0
CMC MALE	148	0	0	0	0	0	0	0	0
CMC FEMALE	0	0	0	0	0	0	0	0	0
CRC	2,182	2,331	2,198	2,009	1,683	1,534	1,005	0	0
DCI	481	493	480	468	467	480	456	464	0
FPRC	456	428	364	356	344	322	0	0	0
GCI	1,620	1,317	1,307	1,121	1,054	793	0	0	0
HCI/HCF	449	441	397	405	328	317	322	323	323
LCI	1,897	1,974	1,923	1,878	1,840	1,702	1,611	1,721	1,704
LECI	2,202	2,192	1,911	1,942	1,937	1,939	1,868	1,851	2,095
LOCI	2,366	2,426	2,459	2,281	2,172	2,086	1,864	2,211	2,178
LORCI	2,337	2,313	2,163	1,886	1,520	0	0	0	0
MACI	2,599	2,111	2,088	1,898	1,705	1,416	1,313	68	0
MANCI	2,380	2,542	2,306	1,830	0	0	0	0	0
MCI	2,284	2,210	1,789	1,788	1,951	1,951	1,964	2,162	2,121
MEPRC	208	0	0	0	0	0	0	0	0
NEPRC	638	651	530	380	458	368	33	0	0
OCF MALE	48	0	0	0	0	0	0	0	0
OCF FEMALE	0	0	0	0	0	0	0	0	0
OCI	2,396	2,285	2,266	2,169	2,146	1,820	1,625	2,071	1,903
ORW	1,418	1,374	1,458	1,334	1,261	1,375	1,261	1,193	919
ORW MALES	249	241	0	0	0	0	0	0	0
OSR	0	0	0	0	1,128	2,359	2,339	2,738	2,680
PCI	1,890	2,028	1,972	1,542	1,712	1,420	1,393	1,242	1,250
RCI	2,834	2,687	2,506	2,278	2,108	1,688	1,475	313	0
SCI/SOTC	1,801	1,912	1,999	1,477	1,517	1,436	1,468	1,445	1,137
SOCF	1,160	1,073	1,832	1,552	2,202	2,107	2,106	2,412	2,376
TCI	955	940	0	0	0	0	0	0	0
WCI	1,578	1,462	1,432	1,324	1,087	146	90	0	0
TOTAL	40,784	39,396	37,116	33,353	31,862	28,076	24,750	23,289	21,621

FIGURE 10: INSTITUTION POPULATION TREND 1994-1986

