



Ohio Department of Rehabilitation and Correction

770 West Broad Street
Columbus, OH 43222
614-752-1164

John R. Kasich, Governor

www.drc.ohio.gov

Gary C. Mohr, Director

TO: ALL CONCERNED

FROM: SENARATH DASSANAYAKA, SENIOR RESEARCHER
BUREAU OF RESEARCH
OFFICE OF POLICY

DATE: 8/27/2014

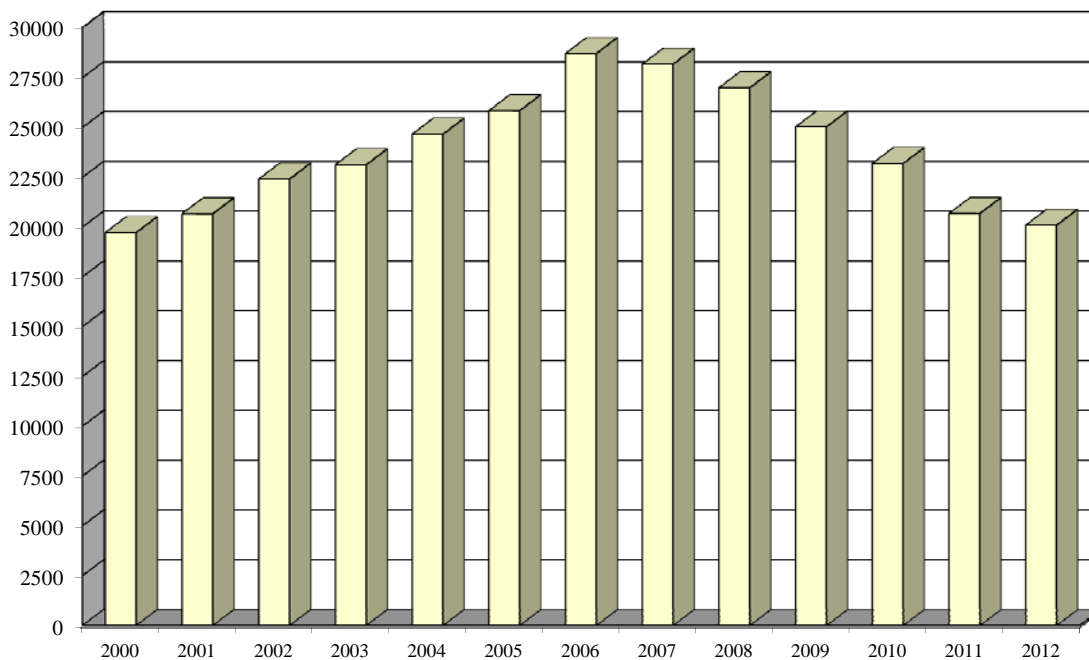
SUBJECT: CALENDAR YEAR 2012 SUMMARY OF INSTITUTION STATISTICS

TOTAL COURT COMMITMENTS TO THE OHIO DEPARTMENT OF REHABILITATION AND CORRECTION:

OFFICIAL COMMITMENT TOTALS			
CRC RECEPTION - MALE	10,093	MALE INTAKE	17,514
LORCI RECEPTION - MALE	7,421	FEMALE INTAKE	2,580
ORW RECEPTION - FEMALE	2,580	TOTAL	20,094
TOTAL	20,094		

COURT COMMITMENTS TO THE DEPARTMENT CY 2000-2011												
2000	2001	2002	2003	2004	2005	2006	2007	2008	2009	2010	2011	2012
19,721	20,669	22,411	23,126	24,662	25,841	28,714	28,178	26,993	25,031	23,191	20,682	20,094

FIGURE 1. COURT COMMITMENTS TO THE DEPARTMENT CY 2000- 2012



NUMBER OF COMMITMENTS TO THE DEPARTMENT**								
CY 2012*	CRC MALE	LORCI MALE	MALE N	MALE %	ORW FEMALE	FEMALE %	TOTAL N	TOTAL %
1ST COMMITMENT	5,013	3,389	8,402	47.97%	1,786	69.22%	10,188	50.70%
2ND COMMITMENT	2,215	1,637	3,852	21.99%	454	17.60%	4,306	21.43%
3 OR MORE COMMITMENTS	2,865	2,395	5,260	30.03%	340	13.18%	5,600	27.87%
TOTAL	10,093	7,421	17,514	100.00%	2,580	100.00%	20,094	100.00%

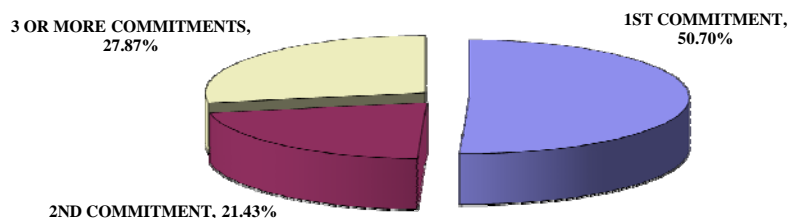
NUMBER OF COMMITMENTS TO THE DEPARTMENT**								
CY 2011*	CRC MALE	LORCI MALE	MALE N	MALE %	ORW FEMALE	FEMALE %	TOTAL N	TOTAL %
1ST COMMITMENT	5,467	3,295	8,762	50.03%	1,853	71.82%	10,615	51.32%
2ND COMMITMENT	2,391	1,555	3,946	22.53%	449	17.40%	4,395	21.25%
3 OR MORE COMMITMENTS	2,909	2,416	5,325	30.40%	347	13.45%	5,672	27.42%
TOTAL	10,767	7,266	18,033	102.96%	2,649	102.67%	20,682	100.00%

NUMBER OF COMMITMENTS TO THE DEPARTMENT**								
CY 2010*	CRC MALE	LORCI MALE	MALE N	MALE %	ORW FEMALE	FEMALE %	TOTAL N	TOTAL %
1ST COMMITMENT	5,806	4,024	9,830	54.51%	2,128	80.33%	11,958	51.56%
2ND COMMITMENT	2,501	1,889	4,390	24.34%	546	20.61%	4,936	21.28%
3 OR MORE COMMITMENTS	3,101	2,834	5,935	32.91%	362	13.67%	6,297	27.15%
TOTAL	11,408	8,747	20,155	111.77%	3,036	114.61%	23,191	100.00%

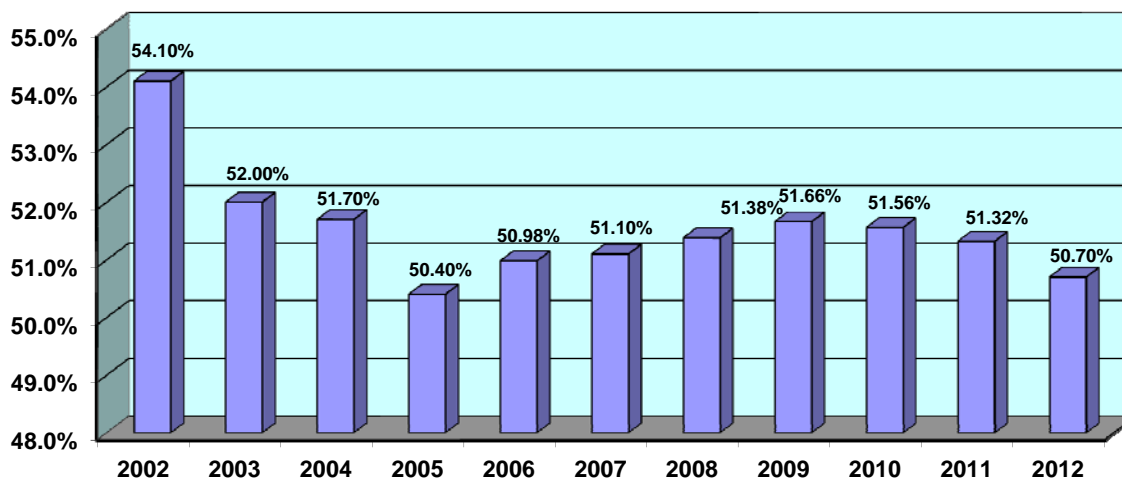
* THIS TABLE IS PRODUCED FROM A DOTS SUMMARY OF PRIOR OHIO COMMITMENTS.

** Percentages may not total 100 due to rounding

FIGURE 2. DISTRIBUTION OF COURT COMMITMENTS CY 2012

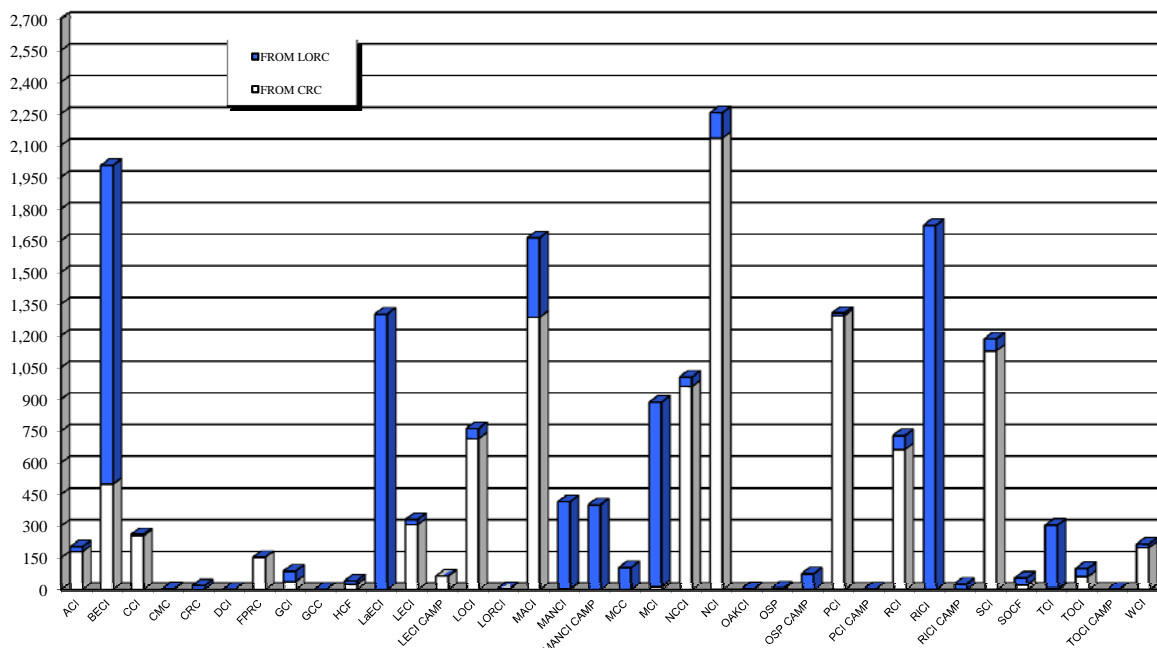


**FIGURE 3. PERCENT OF INMATES SERVING A FIRST COMMITMENT
CY 2002-2012**



INMATE TRANSFERS FROM MALE RECEPTION CENTERS

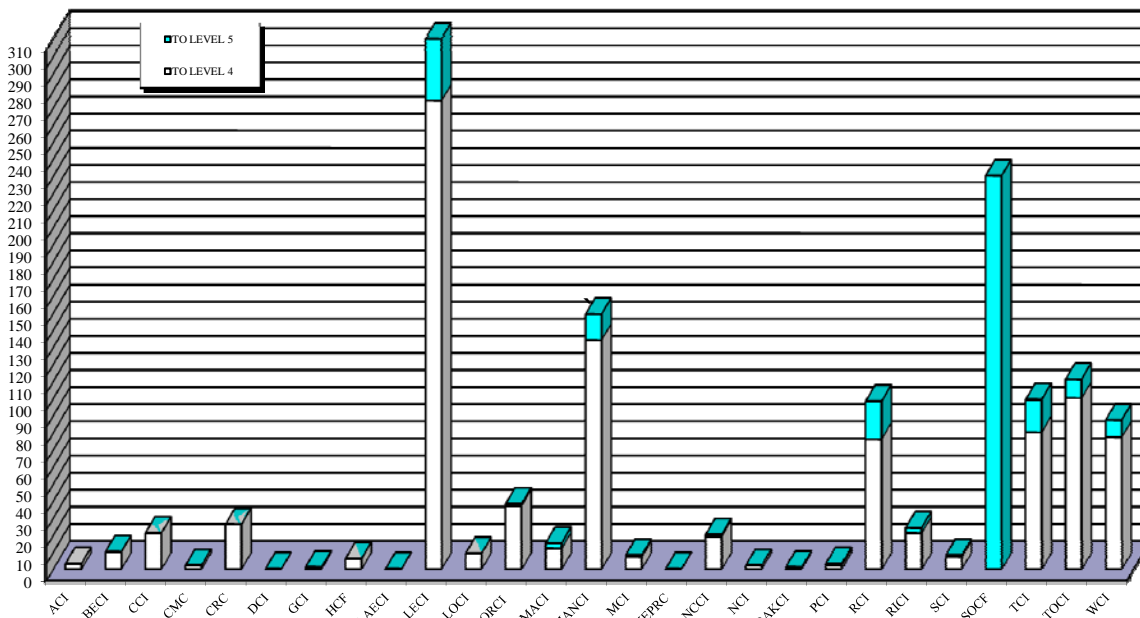
	FROM CRC RECEPTION TO:				FROM LORCI RECEPTION TO:			
	2012	2011	2010	2009	2012	2011	2010	2009
ACI	179	163	96	208	22	18	16	22
BECI	498	1034	0	0	1507	989	2,305	2,182
CCI	253	500	898	930	7	6	10	16
CMC	2	1	13	16	0	1	1	8
CRC	0	0	0	0	17	13	7	11
DCI	0	20	119	261	0	0	11	5
FPRC	152	152	0	0	0	0	0	0
GCI	37	1	1	0	50	62	55	91
GCC	0	0	0	0	0	0	0	0
HCF	24	76	45	25	16	9	14	26
LAECI	0	0	8	0	1302	806	607	836
LECI	306	435	333	418	24	26	20	55
LECI CAMP	63	94	150	127	0	0	0	0
LOCI	713	657	1,339	1,434	48	6	79	3
LORCI	3	0	0	0	0	0	13	0
MACI	1,287	1241	1,587	1,642	375	486	504	618
MANCI	5	11	15	15	409	269	281	496
MANCI CAMP	0	0	0	0	400	344	291	209
MCC	0	0	0	0	103	0	0	0
MCI	14	4	0	0	871	758	683	969
MEPRC	0	0	0	0	0	0	0	0
NCCI	959	218	1,002	1,115	45	947	182	229
NCCTF	0	36	92	84	0	734	518	873
NCI	2,134	2367	1,998	2,069	120	4	219	107
OAKCI	2	17	11	37	0	4	6	10
OSP	6	1	5	0	1	7	40	1
OSP CAMP	0	12	0	0	74	295	182	237
PCI	1,295	1069	1,111	1,336	12	26	16	26
PCI CAMP	0	0	0	0	1	0	0	1
RCI	663	334	316	326	65	12	4	16
RCI CAMP	0	51	273	254	0	0	0	0
RICI	0	3	0	0	1721	1480	1,369	1,404
RICI CAMP	0	0	0	0	24	3	12	0
SCI	1,129	1199	1,156	1,307	56	59	83	82
SOCF	22	15	24	42	32	17	12	32
TCI	7	16	8	34	296	133	208	203
TCT CAMP	0	0	7	20	0	0	0	0
TOCI	61	143	69	93	38	152	43	18
TOCI CAMP	0	13	52	90	1	0	0	0
WCI	197	189	158	206	17	10	5	10
TOTAL	10,011	10,072	10,886	12,089	7654	7676	7796	8,796

FIGURE 4. INMATES RECEIVED FROM CRC AND LORCI CY 2012


DISCIPLINARY AND ADMINISTRATIVE TRANSFERS

	FROM LESSER CUSTODY TO:				FROM HIGHER TO LESSER CUSTODY			
	LEVEL 5 (OSP)		LEVEL 4 (SOCF)		LEVEL 5 (OSP)		LEVEL 4 (SOCF)	
	2012	2011	2012	2011	2012	2011	2012	2011
ACI	0	0	3	2	2	0	2	0
BECI	0	0	10	4	3	0	3	1
CCI	0	0	21	3	100	10	1	0
CMC	0	0	2	0	0	1	2	2
CRC	0	2	26	10	5	0	62	17
DCI	0	0	0	0	0	0	0	0
GCI	0	0	1	1	116	0	0	0
HCF	0	0	6	0	0	0	4	0
LaECI	0	0	0	0	8	0	0	3
LECI	36	2	274	157	20	4	147	27
LOCI	0	2	9	23	0	2	1	4
LORCI	1	6	37	20	1	0	0	0
MACI	3	2	12	4	0	0	0	2
MANCI	15	28	134	135	22	13	36	55
MCI	1	0	7	6	1	0	0	1
MEPRC	0	0	0	0	0	0	0	0
NCCI	1	2	19	2	1	0	0	1
NCCTF	0	0	0	0	0	0	0	0
NCI	0	0	2	7	3	0	0	1
OAKCI	0	1	0	12	0	0	0	95
OSP	0	0	1	0	0	0	0	0
PCI	1	0	2	13	0	0	0	0
RCI	22	0	76	50	9	1	24	36
RICI	3	0	21	2	2	0	2	0
SCI	1	0	7	1	0	0	2	2
SOCF	230	92	0	0	41	20	0	0
TCI	19	5	80	41	14	3	27	37
TOCI	11	19	100	81	129	9	205	113
WCI	10	2	77	119	4	4	26	56
TOTAL	354	163	927	693	481	67	544	453

FIGURE 5. TRANSFERS TO LEVEL 5 AND LEVEL 4 CUSTODY IN CY 2012

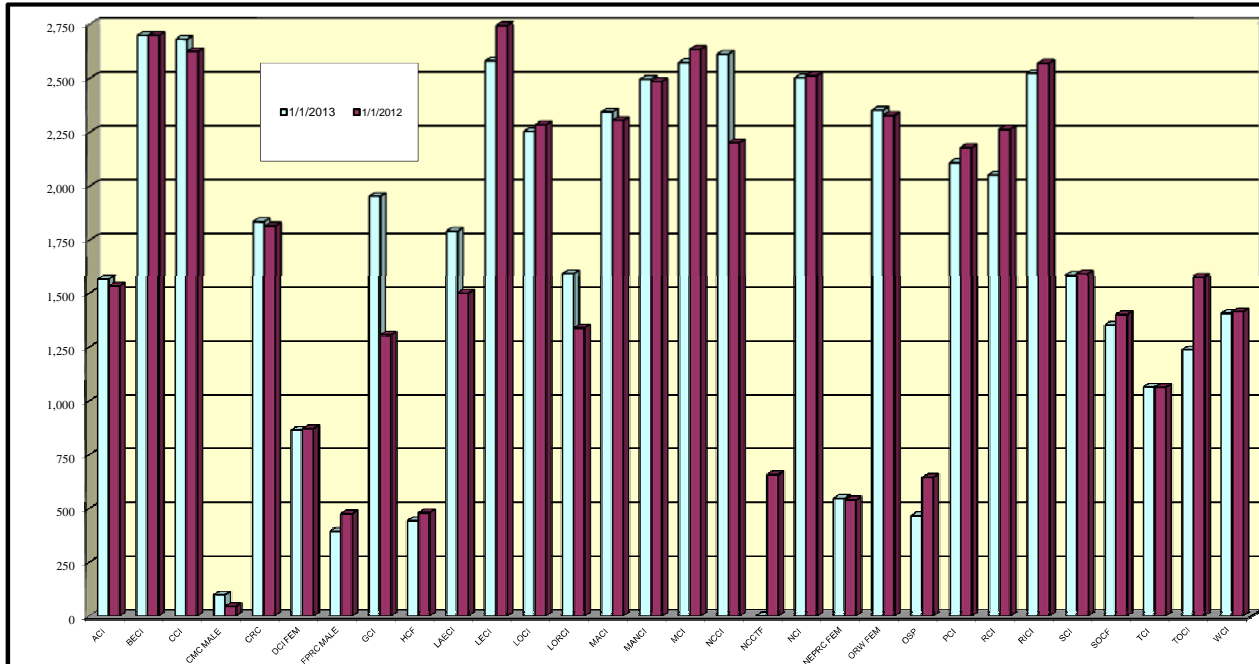


END OF CALENDAR YEAR INSTITUTIONAL POPULATION COUNT:

INSTITUTION POPULATION TREND (PREVIOUS YEAR COMPARISON)

		1/1/2013	1/1/2012	DIFFERENCE	
<i>ACI</i>	(Allen Correctional Institution- Includes OCF Male)	1566	1533	33	2.2%
<i>BECI</i>	(Belmont Correctional Institution)	2697	2698	-1	0.0%
<i>CCI</i>	(Chillicothe Correctional Institution)	2679	2622	57	2.2%
<i>CRC</i>	(Correctional Reception Center)	1833	1813	20	1.1%
<i>FMC MALE</i>	(Franklin Medical Center)	394	474	-80	-16.9%
<i>GCI</i>	(Grafton Correctional Institution)	1951	1305	646	49.5%
<i>HCF</i>	(Hocking Correctional Facility)	443	479	-36	-7.5%
<i>LaECI</i>	(Lake Erie Correctional Institution)	1789	1500	289	19.3%
<i>LECI</i>	(Lebanon Correctional Institution)	2578	2742	-164	-6.0%
<i>LOCI</i>	(London Correctional Institution)	2251	2282	-31	-1.4%
<i>LORCI</i>	(Lorain Correctional Institution)	1591	1338	253	18.9%
<i>MACI</i>	(Madison Correctional Institution)	2342	2302	40	1.7%
<i>MANCI</i>	(Mansfield Correctional Institution)	2493	2482	11	0.4%
<i>MCI</i>	(Marion Correctional Institution)	2571	2632	-61	-2.3%
<i>NCCI</i>	(North Central Correctional Institution)	2610	2199	411	18.7%
<i>NCCTF</i>	(North Coast Correctional Treatment Facility)	0	657	-657	-100.0%
<i>NCI</i>	(Noble Correctional Institution)	2500	2510	-10	-0.4%
<i>OSP</i>	(Ohio State Penitentiary)	466	644	-178	-27.6%
<i>PCI</i>	(Pickaway Correctional Institution)	2106	2176	-70	-3.2%
<i>RCI</i>	(Ross Correctional Institution)	2049	2261	-212	-9.4%
<i>RICI</i>	(Richland Correctional Institution)	2521	2568	-47	-1.8%
<i>SCI</i>	(Southeastern Correctional Institution)	1583	1590	-7	-0.4%
<i>SOCF</i>	(Southern Ohio Correctional Facility)	1352	1400	-48	-3.4%
<i>TCI</i>	(Trumbull Correctional Institution)	1064	1063	1	0.1%
<i>TOCI</i>	(Toledo Correctional Institution)	1237	1575	-338	-21.5%
<i>WCI</i>	(Warren Correctional Institution)	1405	1413	-8	-0.6%
MALE TOTAL		46071	46258	-187	-0.4%
<i>FMC FEMALE</i>	(Franklin Medical Center)	98	112	-14	-12.5%
<i>NEPRC</i>	(Northeast Pre-Release Center)	546	539	7	1.3%
<i>ORW</i>	(Ohio Reformatory for Women)	2350	2325	25	1.1%
<i>DCI FEMALE</i>	(Dayton Correctional Institution)	863	870	-7	0.0%
FEMALE TOTAL		3,857	3,846	11	0.3%
COMBINED MALE / FEMALE TOTAL		49,928	50,104	-176	-0.4%

FIGURE 6. COMPARISON OF INSTITUTION POPULATION COUNT ON 1/1/13 and 1/1/12



RELEASES AND RETURNS:

INSTITUTIONAL STATISTICS

	CY 2012			CY 2011	CY 2010
	Female	Male	TOTAL	TOTAL	TOTAL
RELEASED BY:					
SUSPENDED SENTENCE	0	1	1	4	5
VACATED SENTENCE	0	9	9	12	13
REGULAR PAROLE	7	137	144	142	526
SHOCK PAROLE	0	0	0	2	8
JUDICIAL RELEASE	505	1,913	2,418	2202	2172
POST RELEASE CONTROL	513	7,728	8,241	6351	5687
TRANSITIONAL CONTROL	367	2,670	3,037	2577	2481
EXPIRATION OF SENTENCE	4	215	219	179	219
END OF STATED TERM	1,345	6,696	8,041	10971	13179
APPEALS BOND	0	12	12	20	19
ESCAPES/WALKAWAYS (numbers provided by the Office of Prisons)	0	0	0	1	1
DEATHS (numbers provided by the Bureau of Medical Services)	17	113	130	106	132
TOTAL RELEASED	2,758	19,494	22,252	22,567	24,442

RETURNED BY:

PAROLE VIOLATION (TECH.) ¹	1	55	56	137	185
JUDICIAL RELEASE VIOLATION	112	505	617	688	793
POST RELEASE CONTROL VIOLATION ¹	28	722	750	564	829
TRANSITIONAL CONTROL VIOLATION	66	301	367	227	169
REACTIVATED SUSPENDED SENTENCE	0	1	1	5	5
ESCAPES RETURNED	0	11	11	5	9
APPEALS BOND	3	8	11	14	13
TOTAL RETURNED	210	1,603	1,813	1,640	1,514

¹ Numbers taken from DOTS. PRC and Parole offenders being held at reception prior to a violation hearing have caused errors in the monthly report totals, so they are not summed for this report.

PAROLE VIOLATORS RECOMMISSIONED²	1	59	60	137	204
PRC FELONY VIOLATOR²	41	1,054	1,095	825	748

² PVR and PRC Felony Violator numbers from DOTS. PRC Felony Violator counts are being determined in an improved way for CY 2008 and after.

FIGURE 7. RELEASE TYPES CY 2012

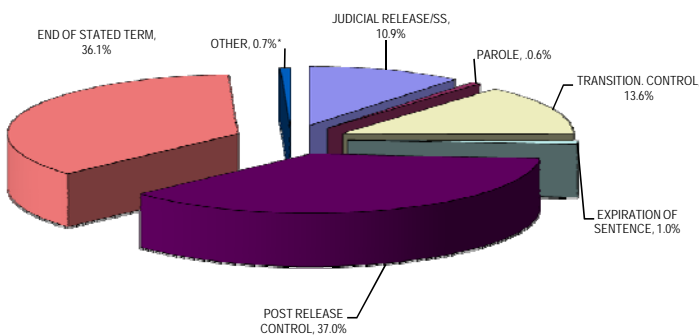
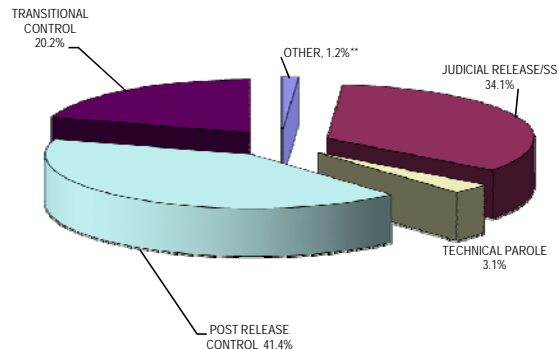


FIGURE 8. RETURN TYPES CY 2012

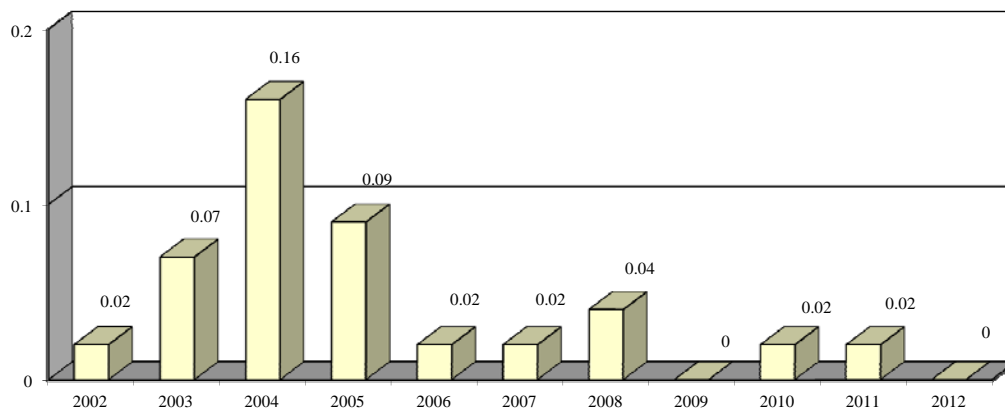


*Other includes the following releases: vacated sentences, appeals bond, escapes and deaths.

**Other includes returns for the following: return from appeals bond and captured escapes.

ESCAPES/WALKAWAYS AND RATES OF ESCAPES/WALKAWAYS											
	2002	2003	2004	2005	2006	2007	2008	2009	2010	2011	2012
ACI	0	0	0	0	0	0	0	0	0	0	0
BECI	0	0	0	0	0	0	0	0	0	0	0
CCI	0	0	0	0	0	0	0	0	0	0	0
CMC	0	0	0	0	0	0	0	0	0	0	0
CRC	0	0	0	0	0	0	0	0	0	0	0
DCI	0	0	0	1	0	0	0	0	0	0	0
FPRC	0	0	0	0	0	0	0	0	0	0	0
GCI	0	0	0	0	0	0	0	0	0	0	0
HCF	0	0	0	0	0	0	0	0	0	0	0
LAECI	0	0	0	0	0	0	0	0	0	0	0
LCI	0	0	0	0	0	0	0	0	0	0	0
LECI	0	0	0	0	1	0	0	0	0	0	0
LOCI	0	0	0	0	0	0	0	0	0	0	0
LORCI	0	0	0	0	0	0	1	0	0	0	0
MACI	0	0	0	0	0	0	0	0	0	0	0
MANCI	0	0	2	0	0	0	0	0	0	1	0
MCI	0	0	0	0	0	0	0	0	0	0	0
MEPRC	0	0	1	0	0	0	0	0	0	0	0
NEPRC	0	0	0	0	0	0	0	0	0	0	0
NCCI	0	0	0	0	0	0	0	0	0	0	0
NCCTF	0	0	0	0	0	0	0	0	0	0	0
NCI	0	0	0	0	0	0	0	0	0	0	0
OAKCI	0	0	0	0	0	0	0	0	0	0	0
ORW	0	0	0	0	0	0	0	0	0	0	0
OSP	0	0	0	1	0	0	0	0	0	0	0
PCI	0	1	2	2	0	0	0	0	0	0	0
RCI	0	1	2	0	0	0	1	0	0	0	0
RICI	0	0	0	0	0	0	0	0	0	0	0
SCI	1	1	0	0	0	1	0	0	0	0	0
SOCF	0	0	0	0	0	0	0	0	1	0	0
TCI	0	0	0	0	0	0	0	0	0	0	0
TOCI	0	0	0	0	0	0	0	0	0	0	0
WCI	0	0	0	0	0	0	0	0	0	0	0
TOTAL	1	3	7	4	1	1	2	0	1	1	0
AVG. SYSTEM POPULATION											
FOR YEAR	45,005	45,084	44,100	44,142	46,861	49,345	50,381	50,969	51020	50504	49817
RATE OF ESCAPES/WALKAWAYS PER 1000 INMATES											
	0.02	0.07	0.16	0.09	0.02	0.02	0.04	0.00	0.02	0.02	0.00

FIGURE 9. RATES OF ESCAPES/WALKAWAYS - CY 2002-2012

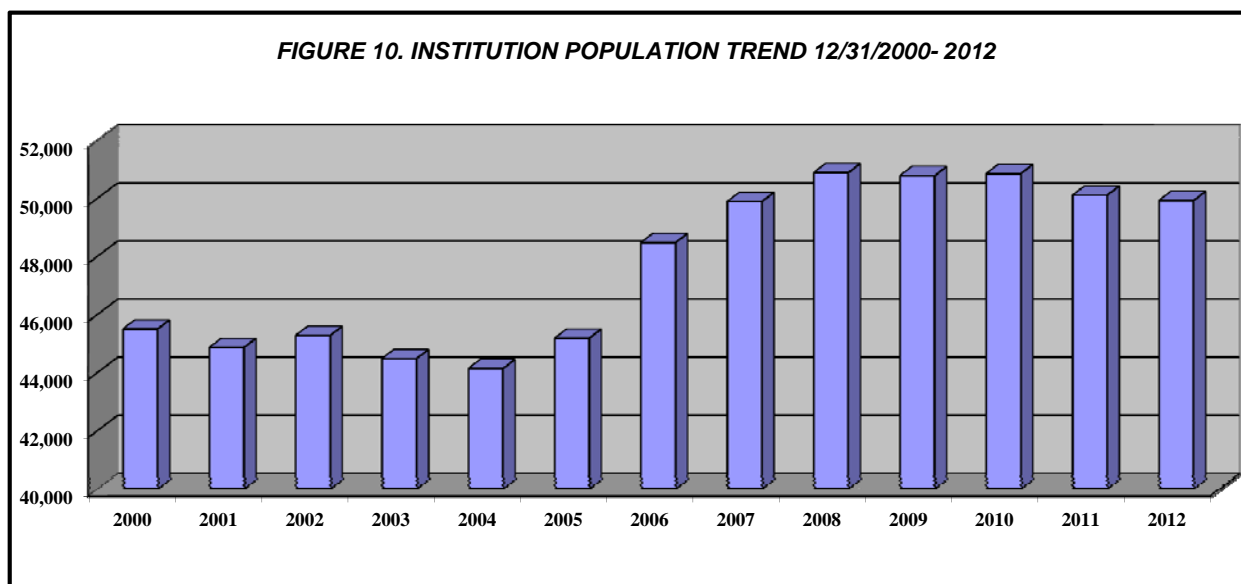


INSTITUTION POPULATION TRENDS:

END OF THE YEAR INSTITUTIONAL POPULATION TREND FOR 12/31/01 THROUGH 12/31/12

	2001	2002	2003	2004	2005	2006	2007	2008	2009	2010	2011	2012
ACI	1,122	1,067	1,239	1,301	1,323	1,331	1,329	1,317	1,378	1331	1533	1,566
BECI	2,017	2,051	2,094	2,160	2,495	2,636	2,707	2,718	2,703	2689	2698	2,697
CCI	2,187	2,315	2,633	2,695	2,720	2,890	2,824	2,904	2,908	2895	2622	2,679
CMC Male	99	106	108	116	111	113	126	128	129	120	44	394
CMC Female	4	6	4	7	7	5	3	5	4	4	78	98
CRC	1,513	1,900	1,521	1,649	1,782	1,766	1,726	1,685	1,517	1586	1813	1,833
DCI Male	456	468	415	418	420	481	474	468	815	785	0	0
DCI Female	0	0	0	0	0	0	0	0	0	0	870	863
FPRC Male	436	479	473	472	478	488	479	452	480	477	474	0
GCI	1,354	1,343	1,369	1,416	1,417	1,412	1,509	1,501	1,518	1520	1305	1,951
HCI/HCF	400	418	455	465	461	462	484	486	482	475	479	443
LaECI	1,382	1,387	1,369	1,382	1,474	1,474	1,481	1,484	1,503	1499	1500	1,789
LCI	1,467	1,543	458	0	0	0	0	0	0	0	0	0
LECI	1,666	1,706	1,912	1,938	2,117	2,251	2,498	2,653	2,761	2768	2742	2,578
LOCI	2,057	2,033	2,048	2,078	2,079	2,218	2,108	2,530	2,516	2507	2282	2,251
LORCI	1,467	1,899	1,521	1,454	1,655	1,624	1,896	1,881	1,682	1679	1338	1,591
MACI	1,899	2,083	2,113	1,945	2,009	2,076	2,314	2,195	2,307	2312	2302	2,342
MANCI	2,308	2,297	2,349	2,374	2,207	2,295	2,382	2,460	2,519	2492	2482	2,493
MCI	1,763	1,694	1,659	1,846	1,727	2,061	2,161	2,210	2,290	2293	2632	2,571
MEPRC	292	318	337	339	338	341	332	323	0	0	0	0
NCCI	1,916	1,889	2,213	2,281	2,294	2,291	2,321	2,311	2,321	2332	2199	2,610
NCCTF	542	540	532	547	601	606	657	649	692	687	657	0
NCI	1,763	2,060	2,086	2,095	2,307	2,308	2,337	2,480	2,462	2408	2510	2,500
NEPRC	606	625	623	531	562	577	566	546	579	496	539	546
OAKCF Male	175	161	123	125	109	132	117	127	171	130	0	0
OAKCF Female	10	6	2	5	5	4	4	6	5	8	0	0
OCI	1,636	0	0	0	0	0	0	0	0	0	0	0
ORW Female	1,696	1,767	1,754	1,954	1,845	2,228	2,298	2,477	2,521	2591	2325	2,350
OSP	512	491	468	455	560	519	517	541	520	562	644	466
PCI	1,834	2,136	2,149	2,084	1,995	2,345	2,342	2,419	2,048	2114	2176	2,106
RCI	2,202	2,248	2,236	2,269	2,217	2,516	2,530	2,586	2,547	2583	2261	2,049
RCI	2,016	2,258	2,254	2,316	2,307	2,464	2,531	2,522	2,533	2528	2568	2,521
SCI	1,352	1,383	1,590	1,534	1,437	1,512	1,515	1,628	1,537	1553	1590	1,583
SOCF	1,449	1,382	1,047	959	1,087	1,327	1,487	1,388	1,415	1470	1400	1,352
TCI Male	1,408	1,371	1,380	964	941	971	957	952	1,047	1060	1063	1,064
TCI Female	0	0	134	134	293	345	374	361	319	312	0	0
TOCI	718	779	791	792	750	1,083	1,113	1,093	1,148	1200	1575	1,237
WCI	1,144	1,075	1,025	1,042	1,059	1,330	1,395	1,398	1,406	1391	1413	1,405
TOTAL	44,868	45,284	44,484	44,142	45,189	48,482	49,894	50,884	50,783	50857	50114	49,928

FIGURE 10. INSTITUTION POPULATION TREND 12/31/2000- 2012



END OF THE YEAR INSTITUTIONAL POPULATION TREND FOR 12/31/99 THROUGH 12/31/89											
	1990	1991	1992	1993	1994	1995	1996	1997	1998	1999	2000
ACI	975	1,007	1,105	1,355	1,481	1415	1,336	1,381	1,397	1,406	1,175
BECI	0	0	0	0	224	1891	2,283	2,433	2,533	2427	1,981
CCI	2,460	2,634	2,802	2,821	2,780	2621	2,580	2,714	2,731	2,244	2,192
CMC Male	0	0	0	139	150	154	149	150	140	151	101
CMC Female	0	0	0	7	6	4	6	4	4	2	2
CRC	1,423	2,223	2,207	2,318	2,204	2074	1,971	2,267	1,982	1,840	1,777
DCI	454	481	485	484	478	484	485	489	467	460	445
EDP	343	0	0	0	0	0	0	0	0	0	0
FPRC	1,012	354	364	429	435	500	489	475	453	407	394
GCI	0	1,161	1,289	1,435	1,596	1590	1,622	1,658	1,587	1,601	1,358
HCF	396	392	395	446	417	436	432	446	441	438	396
LaECI	0	0	0	0	0	0	0	0	0	0	1,369
LCI	1,848	1,909	1,902	1,954	2,051	2110	2,082	2,009	1,907	1,530	1,500
LECI	1,948	1,939	2,188	2,196	2,139	2198	2,105	2,273	2,221	1,976	1,778
LOCI	1,484	2,447	2,394	2,400	2,335	2366	1,896	1,877	1,901	1,885	1,947
LORCI	2,250	1,905	2,175	2,329	2,327	1863	2,003	2,062	2,053	1,606	1,568
MACI	1,696	1,942	2,069	2,312	2,315	2311	2,530	2,545	2,613	2,290	2,060
MANCI	1,411	2,119	2,341	2,455	2,320	2637	2,598	2,669	2,637	2,469	2,286
MCI	1,775	1,856	2,104	2,307	2,207	2093	2,109	21,111	2,206	1,918	1,803
MEPRC	0	0	0	0	337	349	324	347	340	306	305
NCCI	0	0	0	0	724	2274	2,216	2,316	2,314	2,258	1,938
NCCTF	0	0	0	0	0	0	0	0	0	0	549
NCI	0	0	0	0	0	0	1,452	2,377	2,344	1,854	1,832
NEPRC	340	491	611	659	613	645	633	643	592	546	569
OAKCF Female	0	0	0	0	0	0	9	7	7	6	144
OAKCF Male	0	0	0	0	97	229	162	163	173	158	4
OCI	2,135	2,266	2,257	2,280	2,340	2245	2,139	2,039	2,000	1,917	1,908
ORW Female	1,213	1,412	1,389	1,443	1,490	1594	1,642	1,682	1,830	1,845	1,774
ORW Male	0	0	0	249	209	0	0	0	0	0	0
OSP	0	0	0	0	0	0	0	0	492	643	593
PCI	1,536	1,792	1,912	1,942	1,942	1923	1,919	1,920	1,940	1,883	1,785
RCI	2,222	2,372	2,646	2,892	2,813	2618	2,767	2,797	2,805	2,398	2,289
RICI	0	0	0	0	0	0	0	0	102	2,267	2,073
SCI/SOTC	1,533	1,705	2,018	1,905	2,044	1751	1,819	1,742	1,726	1,679	1,368
SOCF	1,829	1,637	1,831	1,093	1,060	1076	1304	1,425	1,425	1,456	1,435
TCI MALE	0	0	83	948	973	1375	1,424	1,446	1,447	1,409	1,327
TOCI	0	0	0	0	0	0	0	0	0	0	222
WCI	1,218	1,402	1,424	1,455	1,502	1,512	1,476	1,336	1,361	1,344	1,258
TOTAL	31,501	35,446	37,991	40,253	41,609	44,338	45,962	47,808	48,171	46,619	45,505

FIGURE 11. INSTITUTION POPULATION TREND 1990-2000

