



Ohio Department of Rehabilitation and Correction

770 West Broad Street
Columbus, OH 43222

Ted Strickland, Governor

www.drc.ohio.gov

Terry Collins, Director

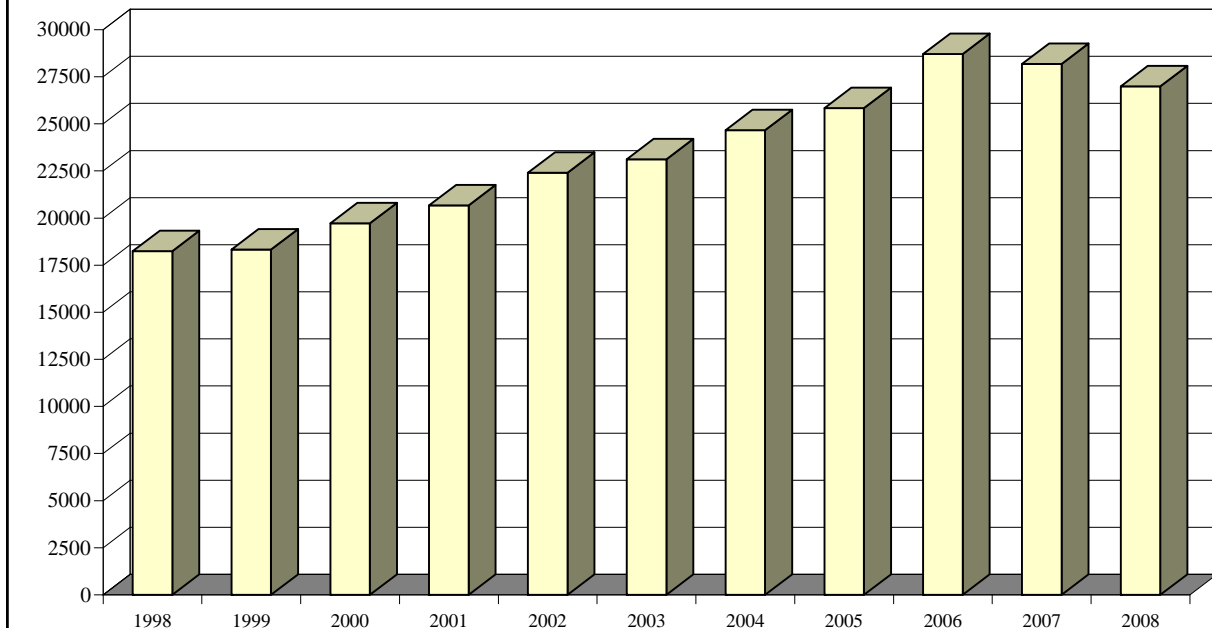
TO: ALL CONCERNED
FROM: SENARATH DASSANAYAKA, SENIOR RESEARCHER
 BUREAU OF RESEARCH
 OFFICE OF POLICY
DATE: 7/31/2009
SUBJECT: CALENDAR YEAR 2008 SUMMARY OF INSTITUTION STATISTICS

TOTAL COURT COMMITMENTS TO THE OHIO DEPARTMENT OF REHABILITATION AND CORRECTION:

OFFICIAL COMMITMENT TOTALS			
CRC RECEPTION - MALE	13,652	MALE INTAKE	23,488
LORCI RECEPTION - MALE	9,836	FEMALE INTAKE	3,505
ORW RECEPTION - FEMALE	3,505	TOTAL	26,993
TOTAL	26,993		

COURT COMMITMENTS TO THE DEPARTMENT CY 1998-2007										
1998	1999	2000	2001	2002	2003	2004	2005	2006	2007	2008
18,252	18,325	19,721	20,669	22,411	23,126	24,662	25,841	28,714	28,178	26,993

FIGURE 1. COURT COMMITMENTS TO THE DEPARTMENT CY 1998- 2008



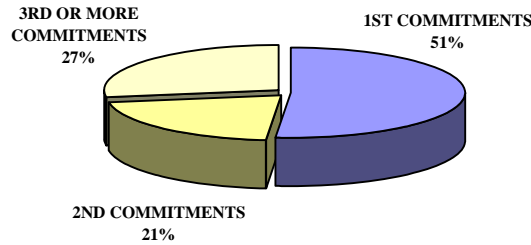
NUMBER OF COMMITMENTS TO THE DEPARTMENT**								
CY 2008*	CRC MALE	LORCI MALE	MALE N	MALE %	ORW FEMALE	FEMALE %	TOTAL N	TOTAL %
1ST COMMITMENT	7,076	4,413	11,489	48.91%	2,380	67.90%	13,869	51.38%
2ND COMMITMENT	2,985	2,152	5,137	21.87%	583	16.63%	5,720	21.19%
3 OR MORE COMMITMENTS	3,591	3,271	6,862	29.21%	542	15.46%	7,404	27.43%
TOTAL	13,652	9,836	23,488	100.00%	3,505	100.00%	26,993	100.00%

NUMBER OF COMMITMENTS TO THE DEPARTMENT**								
CY 2007*	CRC MALE	LORCI MALE	MALE N	MALE %	ORW FEMALE	FEMALE %	TOTAL N	TOTAL %
1ST COMMITMENT	7,226	4,617	11,843	48.39%	2,555	68.94%	14,398	51.10%
2ND COMMITMENT	3,309	2,477	5,786	23.64%	638	17.22%	6,424	22.80%
3 OR MORE COMMITMENTS	3,523	3,320	6,843	27.96%	513	13.84%	7,356	26.11%
TOTAL	14,058	10,414	24,472	100.00%	3,706	100.00%	28,178	100.00%

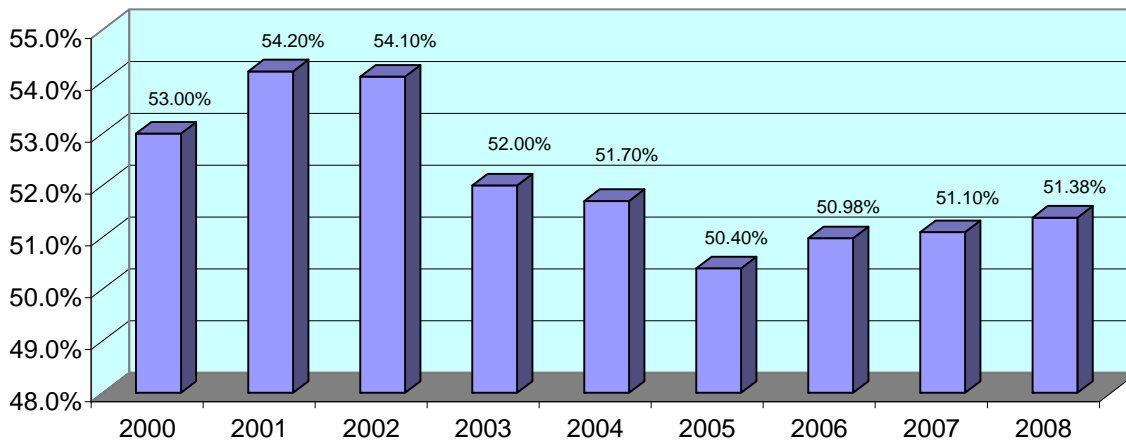
NUMBER OF COMMITMENTS TO THE DEPARTMENT								
CY 2006*	CRC MALE	LORCI MALE	MALE N	MALE %	ORW FEMALE	FEMALE %	TOTAL N	TOTAL %
1ST COMMITMENT	7,240	4,852	12,092	48.51%	2,545	67.20%	14,637	50.98%
2ND COMMITMENT	3,248	2,484	5,732	23.00%	671	17.72%	6,403	22.30%
3 OR MORE COMMITMENTS	3,582	3,521	7,103	28.50%	571	15.08%	7,674	26.73%
TOTAL	14,070	10,857	24,927	100.00%	3,787	100.00%	28,714	100.00%

* THIS TABLE IS PRODUCED FROM A DOTS SUMMARY OF PRIOR OHIO COMMITMENTS.
 ** Percentages may not total 100 due to rounding

FIGURE 2. DISTRIBUTION OF COURT COMMITMENTS CY 2008

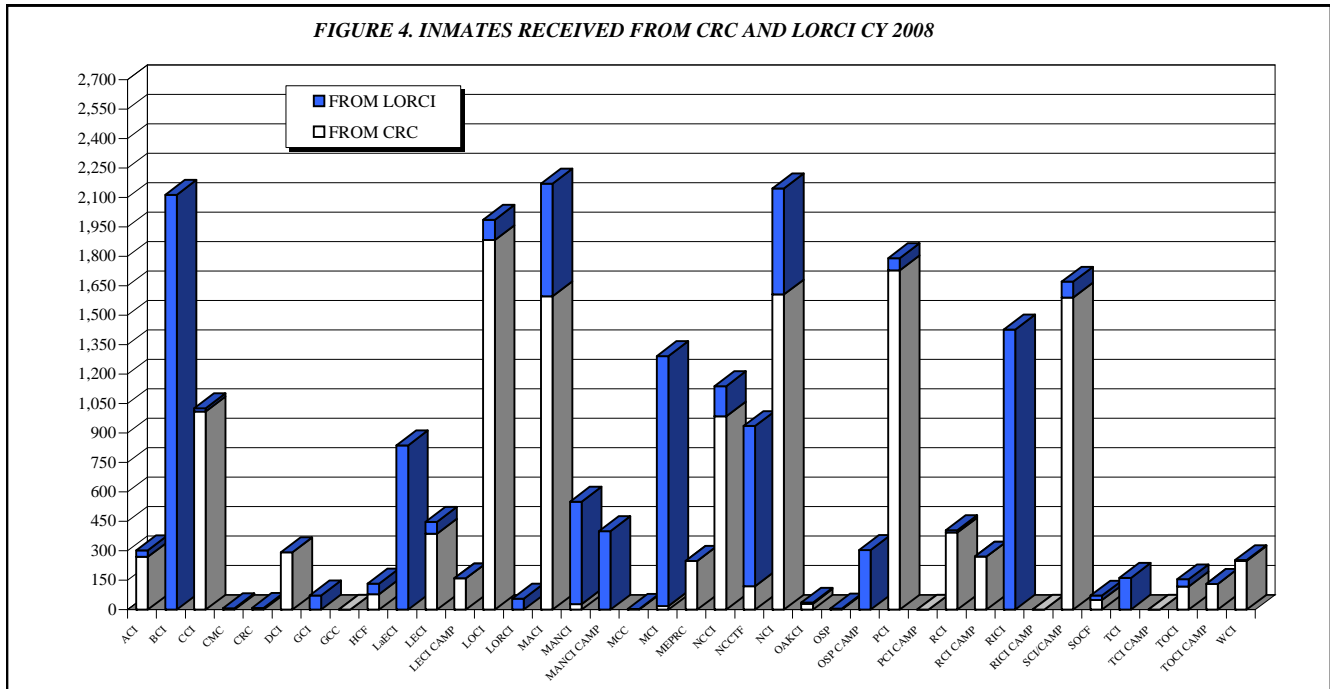


**FIGURE 3. PERCENT OF INMATES SERVING A FIRST COMMITMENT
CY 2000-2008**



INMATE TRANSFERS FROM MALE RECEPTION CENTERS								
	FROM CRC RECEPTION TO:				FROM LORCI RECEPTION TO:			
	2008	2007	2006	2005	2008	2007	2006	2005
ACI	269	282	258	377	34	39	55	31
BCI	0	0	1	0	2114	2265	2,101	2,015
CCI	1,010	1,109	1,246	1,157	16	49	41	40
CMC	5	6	5	4	3	2	3	4
CRC	0	0	0	0	9	22	30	42
DCI	292	158	148	126	1	1	3	2
GCI	1	0	0	2	72	93	164	195
GCC	0	0	0	0	0	0	18	105
HCI	79	74	70	3	54	82	61	68
LAECI	0	0	0	80	837	1047	1,035	987
LECI	387	377	367	414	61	75	14	67
LECI CAMP	160	263	310	298	0	0	0	0
LOCI	1883	1239	1,392	1,153	104	41	1	3
LORCI	0	0	0	0	56	13	21	1
MACI	1597	1912	1,764	1,756	574	616	655	540
MANCI	29	57	42	62	522	350	752	526
MANCI CAMP	0	0	5	0	400	409	143	292
MCC	0	0	7	57	4	1	158	342
MCI	19	3	24	100	1273	1681	1,633	908
MEPRC	249	431	437	391	0	0	0	0
NCCI	985	1235	1,091	1,051	154	67	67	162
NCCTF	120	125	108	80	816	918	939	973
NCI	1606	2214	2,211	2,452	540	2	199	222
OCF	31	49	42	63	5	7	4	11
OSP	4	2	3	2	2	58	360	284
OSP CAMP	0	0	0	0	304	308	83	149
PCI	1729	1764	1,568	1,119	62	106	301	158
PCI CAMP	0	0	0	0	0	0	0	0
RCI	393	552	1,080	318	12	37	55	18
RCI CAMP	271	348	380	500	0	0	0	0
RICI	1	3	18	2	1426	1728	1,697	1,416
RICI CAMP	0	0	0	0	0	0	0	0
SCI/CAMPREAMS	1591	1615	1,524	1,367	80	47	32	59
SOCF	49	67	53	30	23	52	39	12
TCI	1	7	3	5	162	162	178	127
TCI CAMP	0	5	0	8	0	0	0	0
TOCI	118	114	107	47	37	19	146	9
TOCI CAMP	131	150	166	174	0	0	0	0
WCI	249	298	214	140	4	7	8	13
TOTAL	13,259	14,459	14,644	13,338	9761	10,304	10,996	9,781

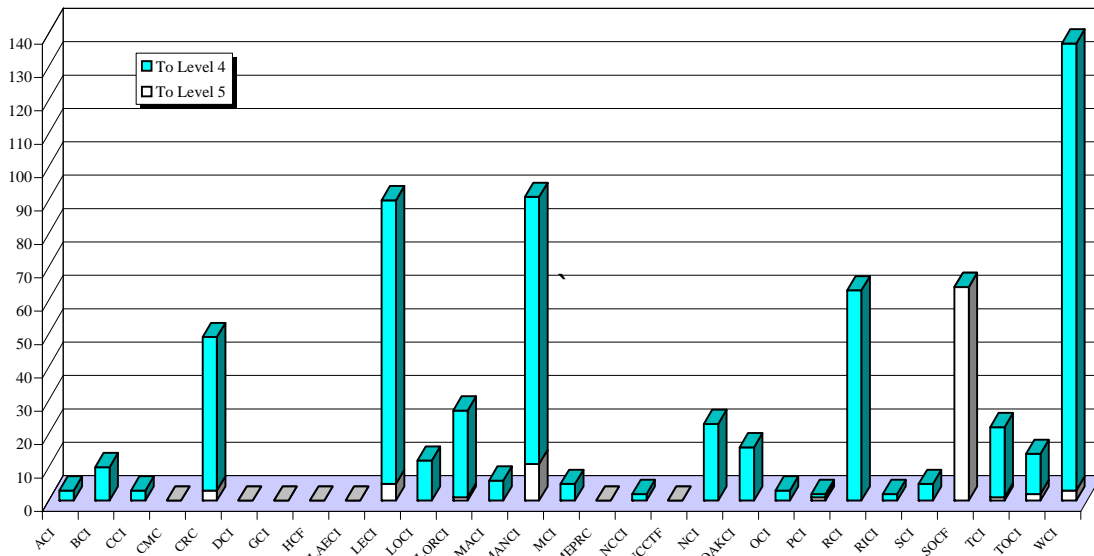
FIGURE 4. INMATES RECEIVED FROM CRC AND LORCI CY 2008



DISCIPLINARY AND ADMINISTRATIVE TRANSFERS

	FROM LESSER CUSTODY TO:				FROM HIGHER TO LESSER CUSTODY			
	LEVEL 5 (OSP)		LEVEL 4 (SOCF)		LEVEL 5 (OSP)		LEVEL 4 (SOCF)	
	2008	2007	2008	2007	2008	2007	2008	2007
ACI	0	0	3	10	0	0	1	1
BCI	0	0	10	11	0	0	5	1
CCI	0	0	3	9	0	0	3	1
CMC	0	0	0	4	0	1	0	3
CRC	3	2	46	64	2	1	3	18
DCI	0	0	0	0	0	0	0	0
GCI	0	0	0	0	0	0	0	0
HCI	0	0	0	0	0	0	1	0
LaECI	0	0	0	0	0	0	0	0
LECI	5	23	85	173	5	20	84	94
LOCI	0	1	12	22	0	1	2	9
LORCI	1	2	26	58	0	0	0	1
MACI	0	2	6	18	0	0	5	4
MANCI	11	1	80	81	3	11	29	41
MCI	0	0	5	4	1	0	4	0
MEPRC	0	0	0	0	0	0	0	0
NCCI	0	0	2	8	0	0	1	1
NCCTF	0	0	0	0	0	0	0	0
NCI	0	0	23	9	0	1	11	0
OCF	0	0	16	17	0	2	26	17
OSP	0	0	3	0	0	0	0	0
PCI	1	0	1	0	0	0	1	0
RCI	0	1	63	83	3	0	43	51
RICI	0	0	2	5	0	0	0	1
SCI	0	0	5	8	0	0	1	8
SOCF	64	100	0	0	32	43	0	0
TCI	1	0	21	27	12	6	25	5
TOCI	2	0	12	21	7	6	33	16
WCI	3	9	134	161	6	6	107	132
TOTAL	91	141	558	793	71	98	385	404

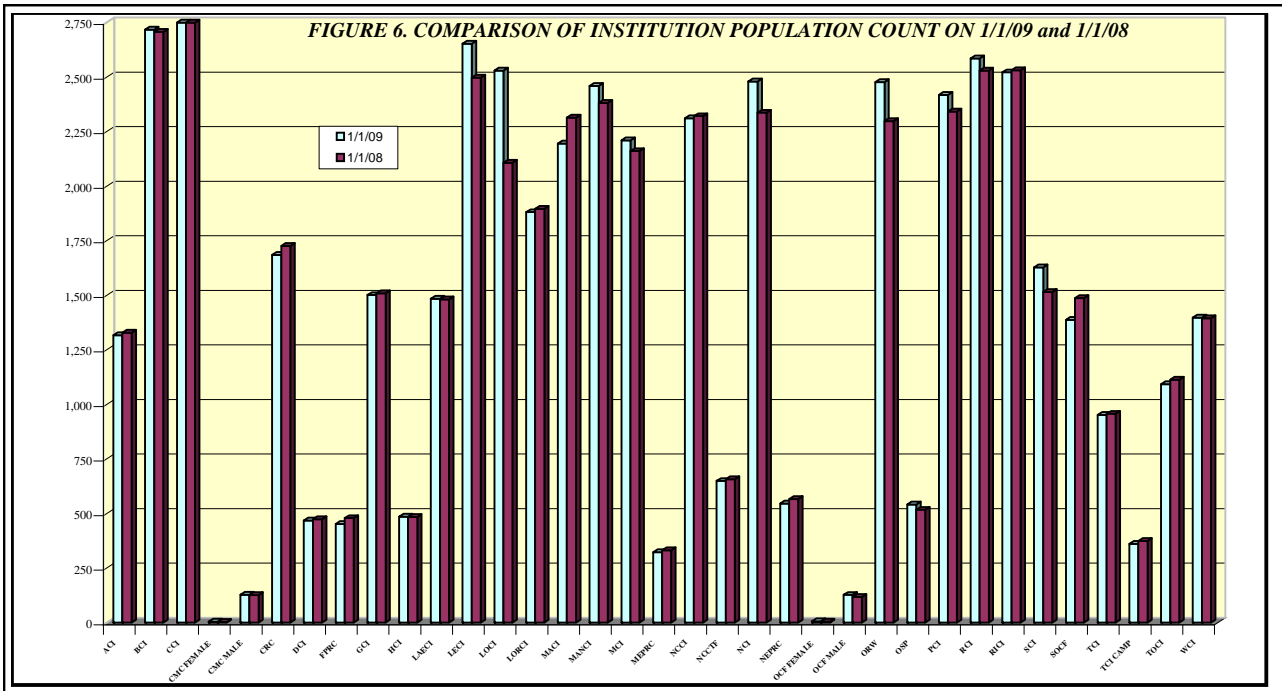
FIGURE 5. TRANSFERS TO LEVEL 5 AND LEVEL 4 CUSTODY IN CY 2008



END OF CALENDAR YEAR INSTITUTIONAL POPULATION COUNT:

INSTITUTION POPULATION TREND (PREVIOUS YEAR COMPARISON)

		1/1/2009	1/1/2008	DIFFERENCE	
ACI	(Allen Correctional Institution)	1317	1,329	-12	-0.9%
BCI	(Belmont Correctional Institution)	2718	2,707	11	0.4%
CCI	(Chillicothe Correctional Institution)	2904	2,824	80	2.8%
CMC MALE	(Correctional Medical Center)	128	126	2	1.6%
CRC	(Correctional Reception Center)	1685	1,726	-41	-2.4%
DCI	(Dayton Correctional Institution)	468	474	-6	-1.3%
GCI	(Grafton Correctional Institution)	1501	1,509	-8	-0.5%
HCI	(Hocking Correctional Institution)	486	484	2	0.4%
LaECI	(Lake Erie Correctional Institution)	1484	1,481	3	0.2%
LECI	(Lebanon Correctional Institution)	2653	2,498	155	6.2%
LOCI	(London Correctional Institution)	2530	2,108	422	20.0%
LORCI	(Lorain Correctional Institution)	1881	1,896	-15	-0.8%
MACI	(Madison Correctional Institution)	2195	2,314	-119	-5.1%
MANCI	(Mansfield Correctional Institution)	2460	2,382	78	3.3%
MCI	(Marion Correctional Institution)	2210	2,161	49	2.3%
MEPRC	(Montgomery Education & Pre-Release Center)	323	332	-9	-2.7%
NCCI	(North Central Correctional Institution)	2311	2,321	-10	-0.4%
NCCTF	(North Coast Correctional Treatment Facility)	649	657	-8	-1.2%
NCI	(Noble Correctional Institution)	2480	2,337	143	6.1%
OCF MALE	(Oakwood Correctional Facility)	127	117	10	8.5%
OSP	(Ohio State Penitentiary)	541	517	24	4.6%
PCI	(Pickaway Correctional Institution)	2419	2,342	77	3.3%
RCI	(Ross Correctional Institution)	2586	2,530	56	2.2%
RICI	(Richland Correctional Institution)	2522	2,531	-9	-0.4%
SCI	(Southeastern Correctional Institution)	1628	1,515	113	7.5%
SOCF	(Southern Ohio Correctional Facility)	1388	1,487	-99	-6.7%
TCI	(Trumbull Correctional Institution)	952	957	-5	-0.5%
TOCI	(Toledo Correctional Institution)	1093	1,113	-20	-1.8%
WCI	(Warren Correctional Institution)	1398	1,395	3	0.2%
MALE TOTAL		47037	46170	867	1.9%
CMC FEMALE	(Correctional Medical Center)	5	3	2	66.7%
FPRC	(Franklin Pre-Release Center)	452	479	-27	-5.6%
NEPRC	(Northeast Pre-Release Center)	546	566	-20	-3.5%
OCF FEMALE	(Oakwood Correctional Facility)	6	4	2	50.0%
ORW	(Ohio Reformatory for Women)	2477	2,298	179	7.8%
TCI CAMP	(Trumbull Corr. Institution Camp)	361	374	-13	-3.5%
FEMALE TOTAL		3847	3,724	123	3.3%
COMBINED MALE / FEMALE TOTAL		50,884	49,894	990	2.0%



RELEASES AND RETURNS:

INSTITUTIONAL STATISTICS					
	CY 2008	CY 2008	CY 2008	CY 2007	CY 2006
	Female	Male	TOTAL	TOTAL	TOTAL
RELEASED BY:					
SUSPENDED SENTENCE	0	0	0	2	22
VACATED SENTENCE	2	2	4	2	10
REGULAR PAROLE	35	1203	1238	1572	2,147
SHOCK PAROLE	0	0	0	1	0
JUDICIAL RELEASE	584	1594	2178	2035	1,882
POST RELEASE CONTROL	962	7654	8616	9212	8,183
TRANSITIONAL CONTROL	193	2201	2394	2368	2,310
EXPIRATION OF SENTENCE	3	231	234	233	351
END OF STATED TERM	1816	11433	13249	13436	13,408
APPEALS BOND	2	16	18	26	19
ESCAPES (numbers provided by the Office of Prisons)	0	2	2	1	1
DEATHS (numbers provided by the Bureau of Medical Services)	2	104	106	126	112
TOTAL RELEASED	3599	24440	28039	29014	28,445

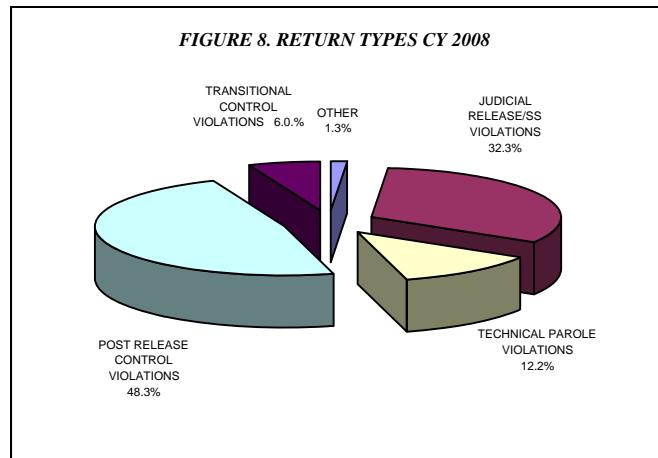
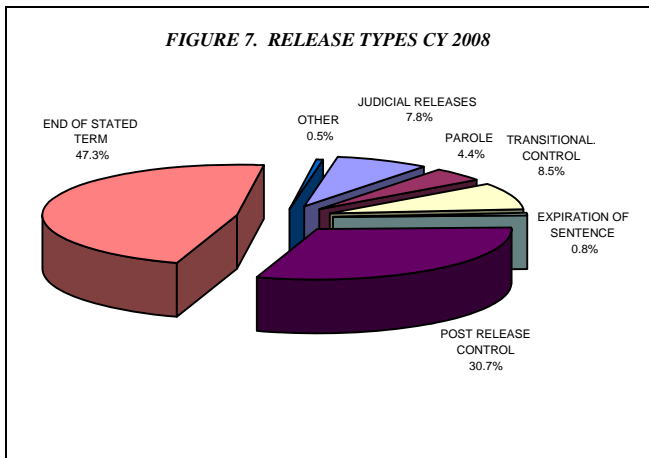
RETURNED BY:					
PAROLE VIOLATION (TECH.) ¹	12	331	343	492	556
JUDICIAL RELEASE VIOLATION	133	772	905	907	885
POST RELEASE CONTROL VIOLATION ¹	76	1286	1362	1452	1,597
TRANSITIONAL CONTROL VIOLATION	26	143	169	188	217
REACTIVATED SUSPENDED SENTENCE	0	6	6	9	5
ESCAPES RETURNED (numbers provided by the Office of Prisons)	0	14	14	1	1
APPEALS BOND	3	20	23	13	13
TOTAL RETURNED	250	2572	2822	3062	3,274

¹ Numbers taken from DOTS. PRC and Parole offenders being held at reception prior to a violation hearing have caused errors in the monthly report totals, so they are not summed for this report.

PAROLE VIOLATORS RECOMMISSIONED²	13	404	417	574	729
PRC FELONY VIOLATOR²	77	1,618	1,695	*	*

² PVR and PRC Felony Violator numbers from DOTS.

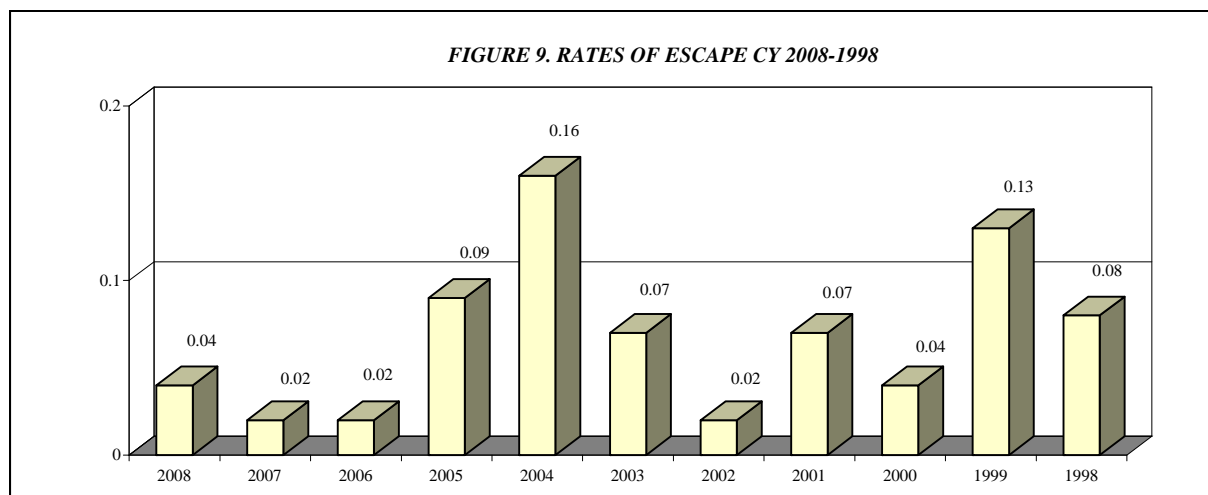
* PRC Felony Violator counts are being determined in an improved way for CY 2008. Revised numbers for earlier years will be published later.



*Other includes the following releases: vacated sentences, appeals bond, escapes and deaths.

**Other includes returns for the following: transitional control violation, return from appeals bond and captured escapes.

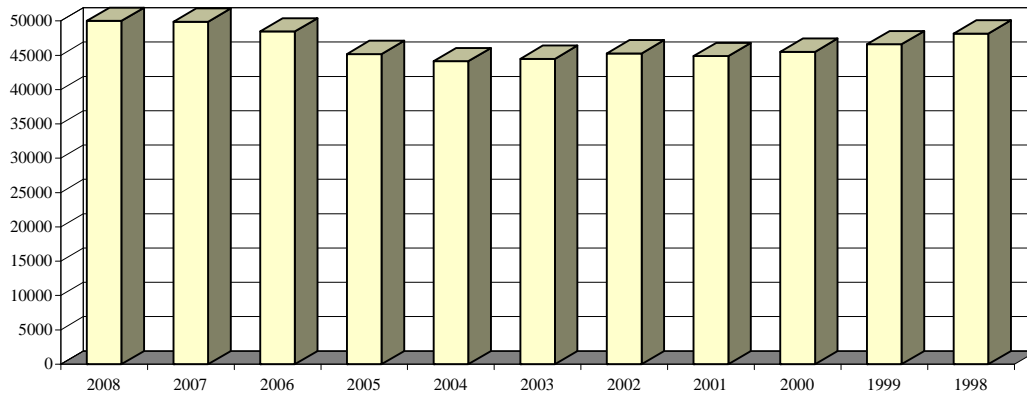
ESCAPES AND RATES OF ESCAPE											
	2008	2007	2006	2005	2004	2003	2002	2001	2000	1999	1998
ACI	0	0	0	0	0	0	0	0	0	0	0
BCI	0	0	0	0	0	0	0	0	0	0	0
CCI	0	0	0	0	0	0	0	0	0	2	0
CMC	0	0	0	0	0	0	0	0	0	0	0
CRC	0	0	0	0	0	0	0	0	0	0	0
DCI	0	0	0	1	0	0	0	0	0	0	0
FPRC	0	0	0	0	0	0	0	0	0	0	0
GCI	0	0	0	0	0	0	0	1	0	0	1
HCI	0	0	0	0	0	0	0	0	0	0	0
LAECI	0	0	0	0	0	0	0	0	0	0	0
LCI	0	0	0	0	0	0	0	0	0	0	0
LECI	0	0	1	0	0	0	0	1	0	0	0
LOCI	0	0	0	0	0	0	0	0	2	0	0
LORCI	1	0	0	0	0	0	0	0	0	0	0
MACI	0	0	0	0	0	0	0	0	0	1	0
MANCI	0	0	0	0	2	0	0	0	0	1	0
MCI	0	0	0	0	0	0	0	0	0	0	0
MEPRC	0	0	0	0	1	0	0	0	0	0	0
NEPRC	0	0	0	0	0	0	0	0	0	0	0
NCCI	0	0	0	0	0	0	0	0	0	0	0
NCCTF	0	0	0	0	0	0	0	0	0	0	0
NCI	0	0	0	0	0	0	0	0	0	0	0
OCF	0	0	0	0	0	0	0	0	0	0	0
ORW	0	0	0	0	0	0	0	0	0	0	0
OSP	0	0	0	1	0	0	0	0	0	0	0
PCI	0	0	0	2	2	1	0	0	0	1	1
RCI	1	0	0	0	2	1	0	0	0	0	1
RICI	0	0	0	0	0	0	0	0	0	0	0
SCI	0	1	0	0	0	1	1	1	0	1	1
SOCF	0	0	0	0	0	0	0	0	0	0	0
TCI	0	0	0	0	0	0	0	0	0	0	0
TOCI	0	0	0	0	0	0	0	0	0	0	0
WCI	0	0	0	0	0	0	0	0	0	0	0
TOTAL	2	1	1	4	7	3	1	3	2	6	4
AVG. SYSTEM POPULATION FOR YEAR	50381	49345	46861	44,142	44,100	45,084	45,005	45,196	46,196	47,039	48,581
RATE OF ESCAPE PER 1000 INMATES	0.04	0.02	0.02	0.09	0.16	0.07	0.02	0.07	0.04	0.13	0.08



INSTITUTION POPULATION TRENDS:

END OF THE YEAR INSTITUTIONAL POPULATION TREND FOR 12/31/08 THROUGH 12/31/98											
	2008	2007	2006	2005	2004	2003	2002	2001	2000	1999	1998
ACI	1317	1,329	1331	1,323	1,301	1,239	1,067	1,122	1,175	1,406	1,397
BCI	2718	2,707	2636	2,495	2,160	2,094	2,051	2,017	1,981	2427	2,533
CCI	2904	2,824	2890	2,720	2,695	2,633	2,315	2,187	2,192	2,244	2,731
CMC Male	128	126	113	111	116	108	106	99	101	151	140
CMC Female	5	3	5	7	7	4	6	4	2	2	4
CRC	1685	1,726	1766	1,782	1,649	1,521	1,900	1,513	1,777	1,840	1,982
DCI	468	474	481	420	418	415	468	456	445	460	467
FPRC	452	479	488	478	472	473	479	436	394	407	453
GCI	1501	1,509	1412	1,417	1,416	1,369	1,343	1,354	1,358	1,601	1,587
HCI/HCF	486	484	462	461	465	455	418	400	396	438	441
LaECI	1484	1,481	1474	1,474	1,382	1,369	1,387	1,382	1,369	0	0
LCI	0	0	0	0	0	458	1,543	1,467	1,500	1,530	1,907
LECI	2653	2,498	2251	2,117	1,938	1,912	1,706	1,666	1,778	1,976	2,221
LOCI	2530	2,108	2218	2,079	2,078	2,048	2,033	2,057	1,947	1,885	1,901
LORCI	1881	1,896	1624	1,655	1,454	1,521	1,899	1,467	1,568	1,606	2,053
MACI	2195	2,314	2076	2,009	1,945	2,113	2,083	1,899	2,060	2,290	2,613
MANCI	2460	2,382	2295	2,207	2,374	2,349	2,297	2,308	2,286	2,469	2,637
MCI	2210	2,161	2061	1,727	1,846	1,659	1,694	1,763	1,803	1,918	2,206
MEPRC	323	332	341	338	339	337	318	292	305	306	340
NCCI	2311	2,321	2291	2,294	2,281	2,213	1,889	1,916	1,938	2,258	2,314
NCCTF	649	657	606	601	547	532	540	542	549	0	0
NCI	2480	2,337	2308	2,307	2,095	2,086	2,060	1,763	1,832	1,854	2,344
NEPRC	546	566	577	562	531	623	625	606	569	546	592
OCF Male	127	117	132	109	125	123	161	175	144	158	173
OCF Female	6	4	4	5	5	2	6	10	4	6	7
OCI	0	0	0	0	0	0	0	1,636	1,908	1,917	2,000
ORW Female	2477	2,298	2228	1,845	1,954	1,754	1,767	1,696	1,774	1,845	1,830
ORW Male	0	0	0	0	0	0	0	0	0	0	0
OSP	541	517	519	560	455	468	491	512	593	643	492
PCI	2419	2,342	2345	1,995	2,084	2,149	2,136	1,834	1,785	1,883	1,940
RCI	2586	2,530	2516	2,217	2,269	2,236	2,248	2,202	2,289	2,398	2,805
RICI	2522	2,531	2464	2,307	2,316	2,254	2,258	2,016	2,073	2,267	102
SCI	1628	1,515	1512	1,437	1,534	1,590	1,383	1,352	1,368	1,679	1,726
SOCF	1388	1,487	1327	1,087	959	1,047	1,382	1,449	1,435	1,456	1,425
TCI Male	952	957	971	941	964	1,380	1,371	1,408	1,327	1,409	1,447
TCI Female	361	374	345	293	134	134	0	0	0	0	0
TOCI	1093	1,113	1083	750	792	791	779	718	222	0	0
WCI	1398	1,395	1330	1,059	1,042	1,025	1,075	1,144	1,258	1,344	1,361
TOTAL	50,884	49,894	48,482	45,189	44,142	44,484	45,284	44,868	45,505	46,619	48,171

FIGURE 10. INSTITUTION POPULATION TREND 12/31/ 2008-1998



END OF THE YEAR INSTITUTIONAL POPULATION TREND FOR 12/31/96 THROUGH 12/31/87											
	1997	1996	1995	1994	1993	1992	1991	1990	1989	1988	1987
ACI	1,381	1,336	1415	1,481	1,355	1,105	1,007	975	885	712	635
BCI	2,433	2,283	1891	224	0	0	0	0	0	0	0
CCI	2,714	2,580	2621	2,780	2,821	2,802	2,634	2,460	2,217	1,976	1,886
CLEV. P.R.	0	0	0	0	0	0	0	0	0	0	43
CMC Male	150	149	154	150	139	0	0	0	0	0	0
CMC Female	4	6	4	6	7	0	0	0	0	0	0
CRC	2,267	1,971	2074	2,204	2,318	2,207	2,223	1,423	1,540	1,333	873
DCI	489	485	484	478	484	485	481	454	469	473	435
EDP	0	0	0	0	0	0	0	343	385	193	0
FPRC	475	489	500	435	429	364	354	1,012	925	167	0
GCI	1,658	1,622	1590	1,596	1,435	1,289	1,161	0	0	0	0
HCI/HCF	446	432	436	417	446	395	392	396	321	327	319
LaECI	0	0	0	0	0	0	0	0	0	0	0
LCI	2,009	2,082	2110	2,051	1,954	1,902	1,909	1,848	1,726	1,719	1,546
LECI	2,273	2,105	2198	2,139	2,196	2,188	1,939	1,948	1,935	1,861	1,871
LOCI	1,877	1,896	2366	2,335	2,400	2,394	2,447	1,484	0	0	0
LORCI	2,062	2,003	1863	2,327	2,329	2,175	1,905	2,250	2,173	1,829	1,987
MACI	2,545	2,530	2311	2,315	2,312	2,069	1,942	1,696	1,697	1,360	820
MANCI	2,669	2,598	2637	2,320	2,455	2,341	2,119	1,411	0	0	0
MCI	21,111	2,109	2093	2,207	2,307	2,104	1,856	1,775	1,937	1,941	1,961
MEPRC	347	324	349	337	0	0	0	0	0	0	0
NCCI	2,316	2,216	2274	724	0	0	0	0	0	0	0
NCCTF	0	0	0	0	0	0	0	0	0	0	0
NCI	2,377	1,452	0	0	0	0	0	0	0	0	0
NEPRC	643	633	645	613	659	611	491	340	413	173	0
OCF Female	7	9	0	0	0	0	0	0	0	0	0
OCF Male	163	162	229	97	0	0	0	0	0	0	0
OCI	2,039	2,139	2245	2,340	2,280	2,257	2,266	2,135	2,053	1,709	1,578
ORW Female	1,682	1,642	1594	1,490	1,443	1,389	1,412	1,213	1,569	1,280	1,183
ORW Male	0	0	0	209	249	0	0	0	0	0	0
OSP	0	0	0	0	0	0	0	0	2,131	2,188	2,317
PCI	1,920	1,919	1923	1,942	1,942	1,912	1,792	1,536	1,518	1,265	1,575
RCI	2,797	2,767	2618	2,813	2,892	2,646	2,372	2,222	1,920	1,584	1,305
RICI	0	0	0	0	0	0	0	0	0	0	0
SCI/SOTC	1,742	1,819	1751	2,044	1,905	2,018	1,705	1,533	1,466	1,528	1,453
SOCF	1,425	1304	1076	1,060	1,093	1,831	1,637	1,829	2,133	2,101	2,156
TCI	1,446	1,424	1375	973	948	83	0	0	0	0	0
TOCI	0	0	0	0	0	0	0	0	0	0	0
WCI	1,336	1,476	1,512	1,502	1,455	1,424	1,402	1,218	887	142	0
TOTAL	47,808	45,962	44,338	41,609	40,253	37,991	35,446	31,501	30,300	25,861	23,943

FIGURE 11. INSTITUTION POPULATION TREND 1996/1987

