



Ohio Department of Rehabilitation and Correction

770 West Broad Street
Columbus, OH 43222
614-752-1104

John R. Kasich, Governor

www.drc.ohio.gov

Gary C. Mohr, Director

TO: ALL CONCERNED

FROM: SENARATH DASSANAYAKA, SENIOR RESEARCHER
BUREAU OF RESEARCH
OFFICE OF POLICY

DATE: 4/13/2011

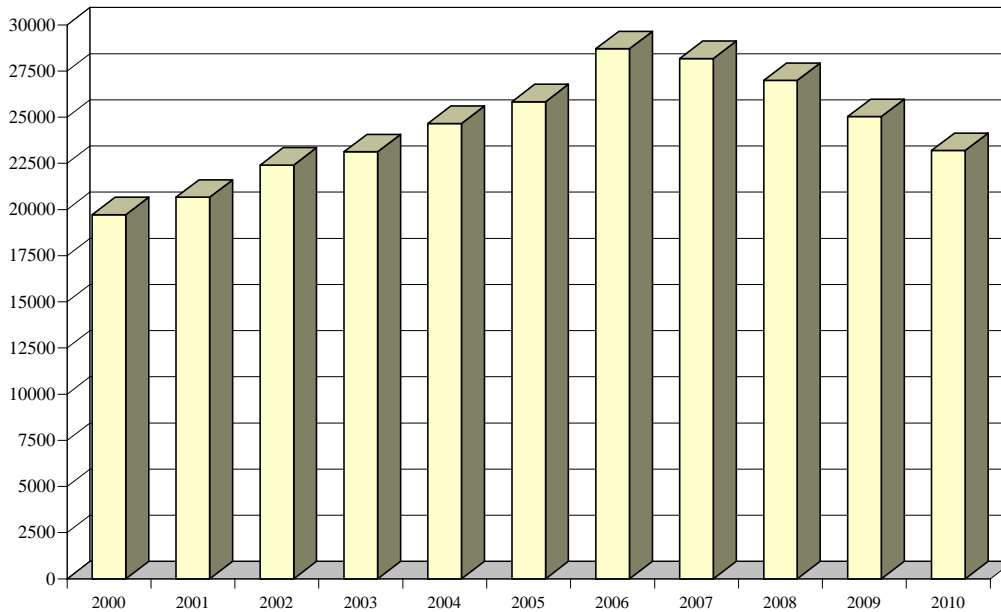
SUBJECT: CALENDAR YEAR 2010 SUMMARY OF INSTITUTION STATISTICS

TOTAL COURT COMMITMENTS TO THE OHIO DEPARTMENT OF REHABILITATION AND CORRECTION:

OFFICIAL COMMITMENT TOTALS			
CRC RECEPTION - MALE	11,408	MALE INTAKE	20,155
LORCI RECEPTION - MALE	8,747	FEMALE INTAKE	3,036
ORW RECEPTION - FEMALE	3,036	TOTAL	23,191
TOTAL	23,191		

COURT COMMITMENTS TO THE DEPARTMENT CY 1999-2009										
2000	2001	2002	2003	2004	2005	2006	2007	2008	2009	2010
19,721	20,669	22,411	23,126	24,662	25,841	28,714	28,178	26,993	25,031	23,191

FIGURE 1. COURT COMMITMENTS TO THE DEPARTMENT CY 2000- 2010



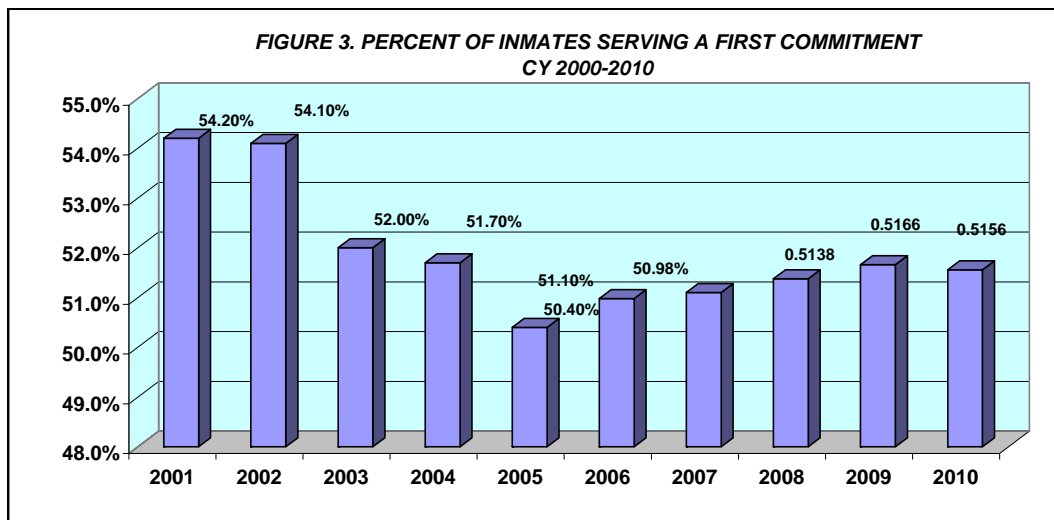
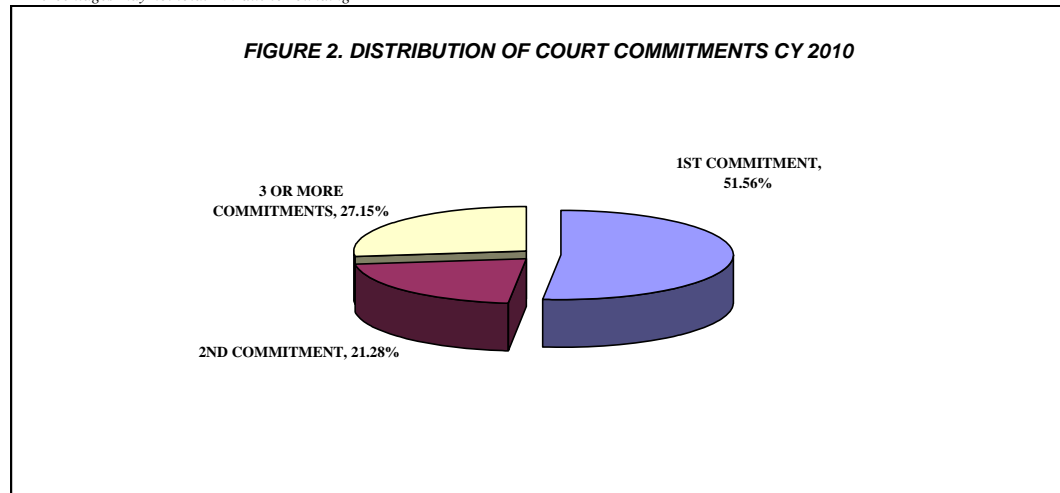
NUMBER OF COMMITMENTS TO THE DEPARTMENT**								
CY 2010*	CRC MALE	LORCI MALE	MALE N	MALE %	ORW FEMALE	FEMALE %	TOTAL N	TOTAL %
1ST COMMITMENT	5,806	4,024	9,830	48.77%	2,128	70.09%	11,958	51.56%
2ND COMMITMENT	2,501	1,889	4,390	21.78%	546	17.98%	4,936	21.28%
3 OR MORE COMMITMENTS	3,101	2,834	5,935	29.45%	362	11.92%	6,297	27.15%
TOTAL	11,408	8,747	20,155	100.00%	3,036	100.00%	23,191	100.00%

NUMBER OF COMMITMENTS TO THE DEPARTMENT**								
CY 2009*	CRC MALE	LORCI MALE	MALE N	MALE %	ORW FEMALE	FEMALE %	TOTAL N	TOTAL %
1ST COMMITMENT	6,402	4,228	10,630	48.81%	2,302	70.77%	12,932	51.66%
2ND COMMITMENT	2,748	2,082	4,830	22.18%	529	16.26%	5,359	21.41%
3 OR MORE COMMITMENTS	3,308	3,010	6,318	29.01%	422	12.97%	6,740	26.93%
TOTAL	12,458	9,320	21,778	100.00%	3,253	100.00%	25,031	100.00%

NUMBER OF COMMITMENTS TO THE DEPARTMENT**								
CY 2008*	CRC MALE	LORCI MALE	MALE N	MALE %	ORW FEMALE	FEMALE %	TOTAL N	TOTAL %
1ST COMMITMENT	7,076	4,413	11,489	48.91%	2,380	67.90%	13,869	51.38%
2ND COMMITMENT	2,985	2,152	5,137	21.87%	583	16.63%	5,720	21.19%
3 OR MORE COMMITMENTS	3,591	3,271	6,862	29.21%	542	15.46%	7,404	27.43%
TOTAL	13,652	9,836	23,488	100.00%	3,505	100.00%	26,993	100.00%

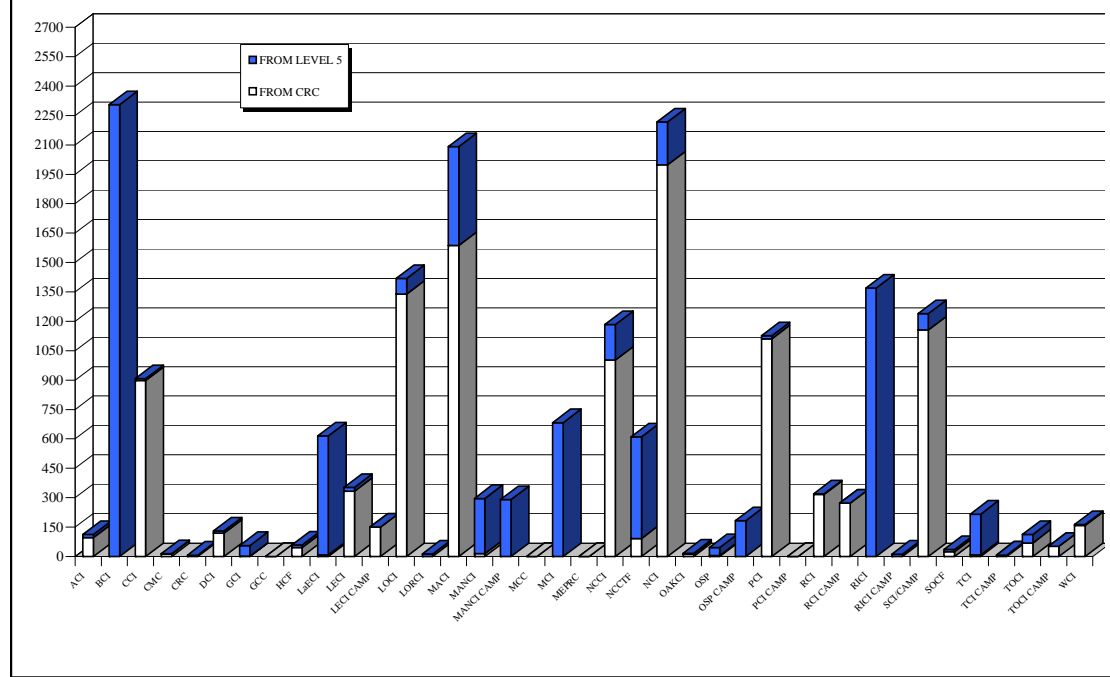
* THIS TABLE IS PRODUCED FROM A DOTS SUMMARY OF PRIOR OHIO COMMITMENTS.

** Percentages may not total 100 due to rounding



INMATE TRANSFERS FROM MALE RECEPTION CENTERS								
	FROM CRC RECEPTION TO:				FROM LORCI RECEPTION TO:			
	2010	2009	2008	2007	2010	2009	2008	2007
ACI	96	208	269	282	16	22	34	39
BCI	0	0	0	0	2,305	2,182	2,114	2,265
CCI	898	930	1,010	1,109	10	16	16	49
CMC	13	16	5	6	1	8	3	2
CRC	0	0	0	0	7	11	9	22
DCI	119	261	292	158	11	5	1	1
GCI	1	0	1	0	55	91	72	93
GCC	0	0	0	0	0	0	0	0
HCI	45	25	79	74	14	26	54	82
LAECI	8	0	0	0	607	836	837	1,047
LECI	333	418	387	377	20	55	61	75
LECI CAMP	150	127	160	263	0	0	0	0
LOCI	1,339	1,434	1,883	1,239	79	3	104	41
LORCI	0	0	0	0	13	0	56	13
MACI	1,587	1,642	1,597	1,912	504	618	574	616
MANCI	15	15	29	57	281	496	522	350
MANCI CAMP	0	0	0	0	291	209	400	409
MCC	0	0	0	0	0	0	4	1
MCI	0	0	19	3	683	969	1,273	1,681
MEPRC	0	0	249	431	0	0	0	0
NCCI	1,002	1,115	985	1,235	182	229	154	67
NCCTF	92	84	120	125	518	873	816	918
NCI	1,998	2,069	1,606	2,214	219	107	540	2
OCF	11	37	31	49	6	10	5	7
OSP	5	0	4	2	40	1	2	58
OSP CAMP	0	0	0	0	182	237	304	308
PCI	1,111	1,336	1,729	1,764	16	26	62	106
PCI CAMP	0	0	0	0	0	1	0	0
RCI	316	326	393	552	4	16	12	37
RCI CAMP	273	254	271	348	0	0	0	0
RICI	0	0	1	3	1,369	1,404	1,426	1,728
RICI CAMP	0	0	0	0	12	0	0	0
SCI/CAMPREAMS	1,156	1,307	1,591	1,615	83	82	80	47
SOCF	24	42	49	67	12	32	23	52
TCI	8	34	1	7	208	203	162	162
TCI CAMP	7	20	0	5	0	0	0	0
TOCI	69	93	118	114	43	18	37	19
TOCI CAMP	52	90	131	150	0	0	0	0
WCI	158	206	249	298	5	10	4	7
TOTAL	10,886	12,089	13,259	14,459	7796	8,796	9,761	10,304

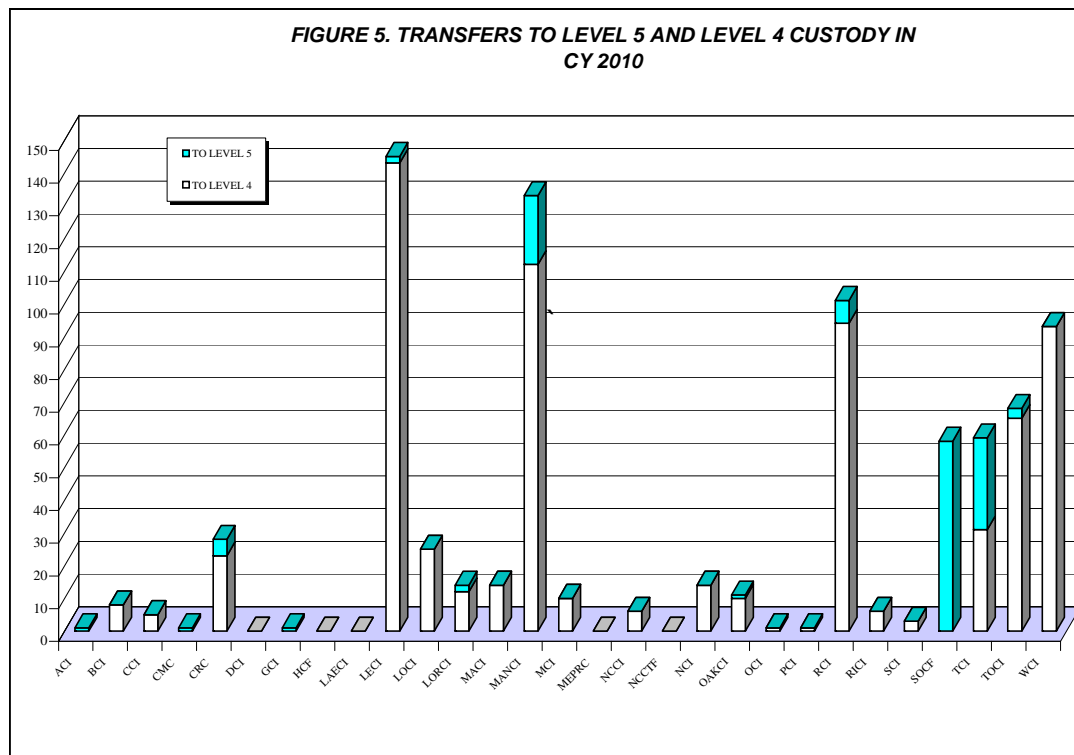
FIGURE 4. INMATES RECEIVED FROM CRC AND LORCI CY 2010



DISCIPLINARY AND ADMINISTRATIVE TRANSFERS

	FROM LESSER CUSTODY TO:				FROM HIGHER TO LESSER CUSTODY			
	LEVEL 5 (OSP)		LEVEL 4 (SOCF)		LEVEL 5 (OSP)		LEVEL 4 (SOCF)	
	2010	2009	2010	2009	2010	2009	2010	2009
ACI	1	0	0	13	0	0	1	1
BCI	0	0	8	4	0	0	0	0
CCI	0	0	5	0	0	0	0	1
CMC	1	0	0	1	0	1	1	2
CRC	5	0	23	43	2	3	1	7
DCI	0	0	0	0	0	0	0	2
GCI	1	0	0	4	0	0	0	0
HCI	0	0	0	0	0	0	0	0
LaECI	0	0	0	0	0	0	0	0
LECI	2	1	143	136	4	0	50	34
LOCI	0	0	25	17	0	0	7	8
LORCI	2	1	12	33	0	0	1	2
MACI	0	0	14	9	0	0	4	10
MANCI	21	3	112	79	6	3	43	35
MCI	0	0	10	3	0	0	8	9
MEPRC	0	0	0	0	0	0	0	0
NCCI	0	0	6	3	0	0	1	3
NCCTF	0	0	0	0	0	0	0	0
NCI	0	0	14	13	0	1	7	6
OCF	1	0	10	24	1	0	9	47
OSP	0	0	1	0	0	0	0	0
PCI	0	0	1	1	0	0	1	3
RCI	7	0	94	124	3	5	42	46
RICI	0	0	6	6	0	0	8	1
SCI	0	0	3	2	0	0	1	2
SOCF	58	73	0	0	33	40	0	0
TCI	28	0	31	47	8	10	32	62
TOCI	3	0	65	35	10	17	48	80
WCI	0	0	93	158	4	6	62	116
TOTAL	130	78	676	755	71	86	327	477

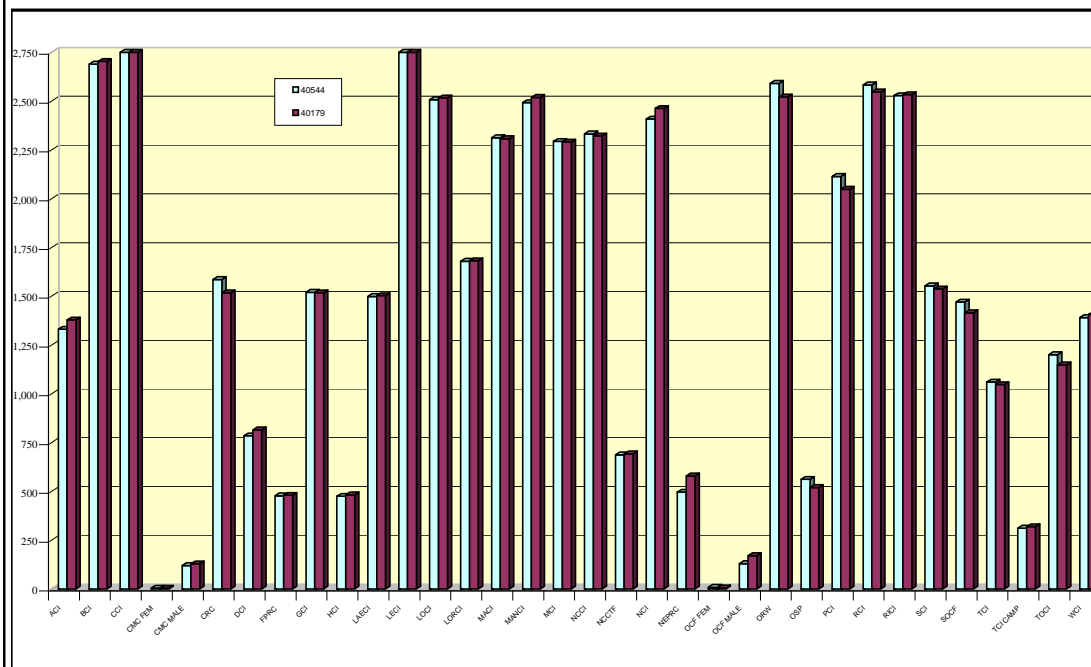
FIGURE 5. TRANSFERS TO LEVEL 5 AND LEVEL 4 CUSTODY IN CY 2010



END OF CALENDAR YEAR INSTITUTIONAL POPULATION COUNT:

INSTITUTION POPULATION TREND (PREVIOUS YEAR COMPARISON)					
		1/1/2011	1/1/2010	DIFFERENCE	
ACI	(Allen Correctional Institution)	1,331	1,378	-47	-3.4%
BCI	(Belmont Correctional Institution)	2,689	2,703	-14	-0.5%
CCI	(Chillicothe Correctional Institution)	2,895	2,908	-13	-0.4%
CMC MALE	(Correctional Medical Center)	120	129	-9	-7.0%
CRC	(Correctional Reception Center)	1,586	1,517	69	4.5%
DCI/MEPRC	(Dayton Correctional Institution)	785	815	-30	-3.7%
GCI	(Grafton Correctional Institution)	1,520	1,518	2	0.1%
HCI	(Hocking Correctional Institution)	475	482	-7	-1.5%
LaECI	(Lake Erie Correctional Institution)	1,499	1,503	-4	-0.3%
LECI	(Lebanon Correctional Institution)	2,768	2,761	7	0.3%
LOCI	(London Correctional Institution)	2,507	2,516	-9	-0.4%
LORCI	(Lorain Correctional Institution)	1,679	1,682	-3	-0.2%
MACI	(Madison Correctional Institution)	2,312	2,307	5	0.2%
MANCI	(Mansfield Correctional Institution)	2,492	2,519	-27	-1.1%
MCI	(Marion Correctional Institution)	2,293	2,290	3	0.1%
NCCI	(North Central Correctional Institution)	2,332	2,321	11	0.5%
NCCTF	(North Coast Correctional Treatment Facility)	687	692	-5	-0.7%
NCI	(Noble Correctional Institution)	2,408	2,462	-54	-2.2%
OCF MALE	(Oakwood Correctional Facility)	130	171	-41	-24.0%
OSP	(Ohio State Penitentiary)	562	520	42	8.1%
PCI	(Pickaway Correctional Institution)	2,114	2,048	66	3.2%
RCI	(Ross Correctional Institution)	2,583	2,547	36	1.4%
RICI	(Richland Correctional Institution)	2,528	2,533	-5	-0.2%
SCI	(Southeastern Correctional Institution)	1,553	1,537	16	1.0%
SOCF	(Southern Ohio Correctional Facility)	1,470	1,415	55	3.9%
TCI	(Trumbull Correctional Institution)	1,060	1,047	13	1.2%
TOCI	(Toledo Correctional Institution)	1,200	1,148	52	4.5%
WCI	(Warren Correctional Institution)	1,391	1,406	-15	-1.1%
MALE TOTAL		46,969	46,875	94	0.2%
CMC FEMAL	(Correctional Medical Center)	4	4	0	0.0%
FPRC	(Franklin Pre-Release Center)	477	480	-3	-0.6%
NEPRC	(Northeast Pre-Release Center)	496	579	-83	-14.3%
OCF FEMAL	(Oakwood Correctional Facility)	8	5	3	60.0%
ORW	(Ohio Reformatory for Women)	2,591	2,521	70	2.8%
TCI CAMP	(Trumbull Corr. Institution Camp)	312	319	-7	-2.2%
FEMALE TOTAL		3,888	3,908	-20	-0.5%
COMBINED MALE / FEMALE TOTAL		50,857	50,783	74	0.1%

FIGURE 6. COMPARISON OF INSTITUTION POPULATION COUNT ON 1/1/11 and 1/1/10



RELEASES AND RETURNS:

INSTITUTIONAL STATISTICS					
	CY 2010	CY 2010	CY 2010	CY 2009	CY 2008
	Female	Male	TOTAL	TOTAL	TOTAL
RELEASED BY:					
SUSPENDED SENTENCE	0	5	5	7	0
VACATED SENTENCE	1	12	13	3	4
REGULAR PAROLE	17	509	526	971	1,238
SHOCK PAROLE	7	1	8	0	0
JUDICIAL RELEASE	627	1,545	2172	2293	2,178
POST RELEASE CONTROL	472	5,215	5687	7558	8,616
TRANSITIONAL CONTROL	255	2,226	2481	2244	2,394
EXPIRATION OF SENTENCE	1	218	219	276	234
END OF STATED TERM	1,836	11,343	13179	12705	13,249
APPEALS BOND	7	12	19	29	18
ESCAPES (numbers provided by the Office of Prisons)	0	0	0	0	2
DEATHS (numbers provided by the Bureau of Medical Services)	5	127	132	125	106
TOTAL RELEASED	3,228	21,213	24441	26211	28,039

RETURNED BY:

PAROLE VIOLATION (TECH.) ¹	0	137	137	185	343
JUDICIAL RELEASE VIOLATION	124	564	688	793	905
POST RELEASE CONTROL VIOLATION ¹	19	545	564	829	1,362
TRANSITIONAL CONTROL VIOLATION	24	203	227	169	169
REACTIVATED SUSPENDED SENTENCE	0	5	5	5	6
ESCAPES RETURNED	0	5	5	9	14
APPEALS BOND	3	11	14	13	23
TOTAL RETURNED	170	1,470	1,640	1514	2,822

¹ Numbers taken from DOTS. PRC and Parole offenders being held at reception prior to a violation hearing have caused errors in the monthly report totals, so they are not summed for this report.

PAROLE VIOLATORS RECOMMISSIONED²	2	202	204	277	417
PRC FELONY VIOLATOR²	34	708	742	1168	1,695

² PVR and PRC Felony Violator numbers from DOTS.

* PRC Felony Violator counts are being determined in an improved way for CY 2008 and after. Revised numbers for earlier years will be published later.

FIGURE 7. RELEASE TYPES CY 2010

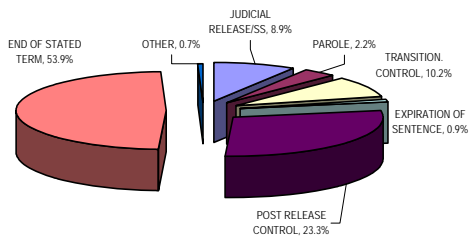
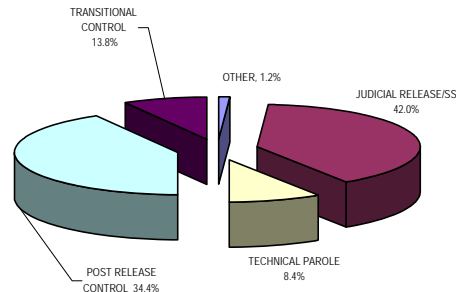


FIGURE 8. RETURN TYPES CY 2010

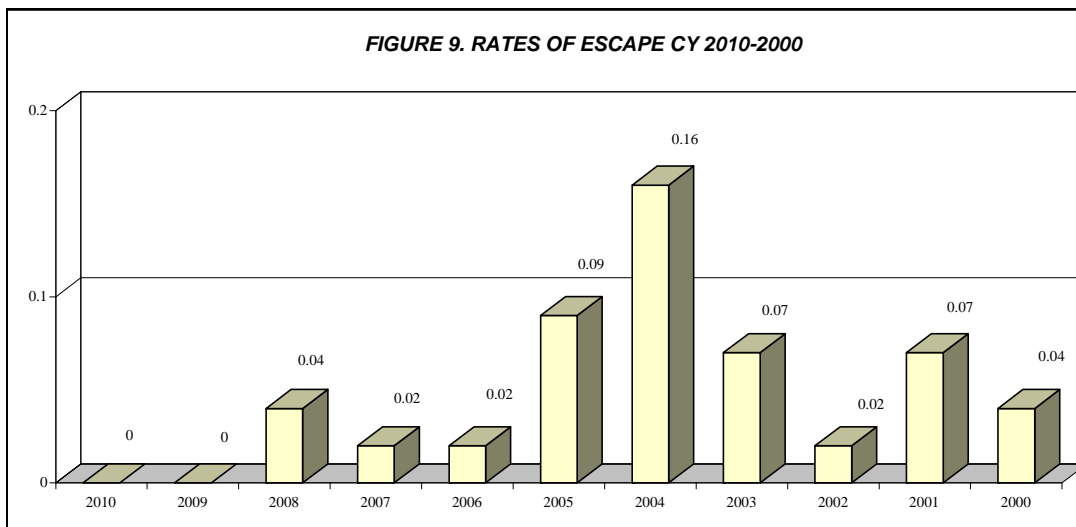


*Other includes the following releases: vacated sentences, appeals bond, escapes and deaths.

**Other includes returns for the following: return from appeals bond and captured escapees.

ESCAPES AND RATES OF ESCAPE											
	2010	2009	2008	2007	2006	2005	2004	2003	2002	2001	2000
ACI	0	0	0	0	0	0	0	0	0	0	0
BCI	0	0	0	0	0	0	0	0	0	0	0
CCI	0	0	0	0	0	0	0	0	0	0	0
CMC	0	0	0	0	0	0	0	0	0	0	0
CRC	0	0	0	0	0	0	0	0	0	0	0
DCI	0	0	0	0	0	1	0	0	0	0	0
FPRC	0	0	0	0	0	0	0	0	0	0	0
GCI	0	0	0	0	0	0	0	0	0	1	0
HCI	0	0	0	0	0	0	0	0	0	0	0
LAECI	0	0	0	0	0	0	0	0	0	0	0
LCI	0	0	0	0	0	0	0	0	0	0	0
LECI	0	0	0	0	1	0	0	0	0	1	0
LOCI	0	0	0	0	0	0	0	0	0	0	2
LORCI	0	0	1	0	0	0	0	0	0	0	0
MACI	0	0	0	0	0	0	0	0	0	0	0
MANCI	0	0	0	0	0	0	2	0	0	0	0
MCI	0	0	0	0	0	0	0	0	0	0	0
MEPRC	0	0	0	0	0	0	1	0	0	0	0
NEPRC	0	0	0	0	0	0	0	0	0	0	0
NCCI	0	0	0	0	0	0	0	0	0	0	0
NCCTF	0	0	0	0	0	0	0	0	0	0	0
NCI	0	0	0	0	0	0	0	0	0	0	0
OCF	0	0	0	0	0	0	0	0	0	0	0
ORW	0	0	0	0	0	0	0	0	0	0	0
OSP	0	0	0	0	0	1	0	0	0	0	0
PCI	0	0	0	0	0	2	2	1	0	0	0
RCI	0	0	1	0	0	0	2	1	0	0	0
RICI	0	0	0	0	0	0	0	0	0	0	0
SCI	0	0	0	1	0	0	0	1	1	1	0
SOCF	0	0	0	0	0	0	0	0	0	0	0
TCI	0	0	0	0	0	0	0	0	0	0	0
TOCI	0	0	0	0	0	0	0	0	0	0	0
WCI	0	0	0	0	0	0	0	0	0	0	0
			0								
TOTAL	0	0	2	1	1	4	7	3	1	3	2
AVG. SYSTEM POPULATION FOR YEAR	51020	50,969	50,381	49,345	46,861	44,142	44,100	45,084	45,005	45,196	46,196
RATE OF ESCAPE PER 1000 INMAY	0.00	0.00	0.04	0.02	0.02	0.09	0.16	0.07	0.02	0.07	0.04

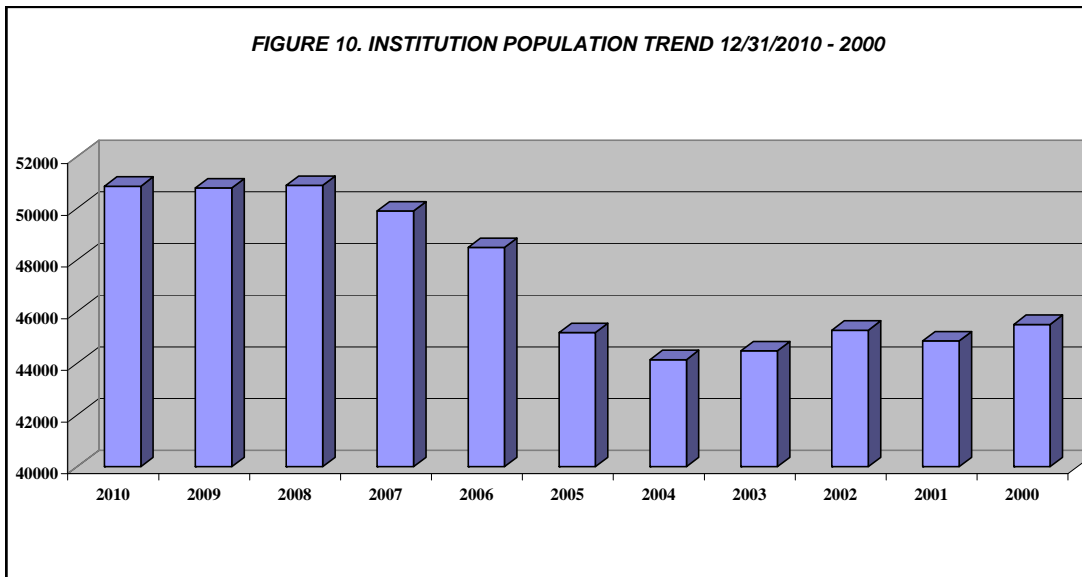
FIGURE 9. RATES OF ESCAPE CY 2010-2000



INSTITUTION POPULATION TRENDS:

END OF THE YEAR INSTITUTIONAL POPULATION TREND FOR 12/31/10 THROUGH 12/31/00											
	2010	2009	2008	2007	2006	2005	2004	2003	2002	2001	2000
ACI	1331	1,378	1,317	1,329	1,331	1,323	1,301	1,239	1,067	1,122	1,175
BCI	2689	2,703	2,718	2,707	2,636	2,495	2,160	2,094	2,051	2,017	1,981
CCI	2895	2,908	2,904	2,824	2,890	2,720	2,695	2,633	2,315	2,187	2,192
CMC Male	120	129	128	126	113	111	116	108	106	99	101
CMC Female	4	4	5	3	5	7	7	4	6	4	2
CRC	1586	1,517	1,685	1,726	1,766	1,782	1,649	1,521	1,900	1,513	1,777
DCI	785	815	468	474	481	420	418	415	468	456	445
FPRC	477	480	452	479	488	478	472	473	479	436	394
GCI	1520	1,518	1,501	1,509	1,412	1,417	1,416	1,369	1,343	1,354	1,358
HCI/HCF	475	482	486	484	462	461	465	455	418	400	396
LaECI	1499	1,503	1,484	1,481	1,474	1,474	1,382	1,369	1,387	1,382	1,369
LCI	0	0	0	0	0	0	0	458	1,543	1,467	1,500
LECI	2768	2,761	2,653	2,498	2,251	2,117	1,938	1,912	1,706	1,666	1,778
LOCI	2507	2,516	2,530	2,108	2,218	2,079	2,078	2,048	2,033	2,057	1,947
LORCI	1679	1,682	1,881	1,896	1,624	1,655	1,454	1,521	1,899	1,467	1,568
MACI	2312	2,307	2,195	2,314	2,076	2,009	1,945	2,113	2,083	1,899	2,060
MANCI	2492	2,519	2,460	2,382	2,295	2,207	2,374	2,349	2,297	2,308	2,286
MCI	2293	2,290	2,210	2,161	2,061	1,727	1,846	1,659	1,694	1,763	1,803
MEPRC	0	0	323	332	341	338	339	337	318	292	305
NCCI	2332	2,321	2,311	2,321	2,291	2,294	2,281	2,213	1,889	1,916	1,938
NCCTF	687	692	649	657	606	601	547	532	540	542	549
NCI	2408	2,462	2,480	2,337	2,308	2,307	2,095	2,086	2,060	1,763	1,832
NEPRC	496	579	546	566	577	562	531	623	625	606	569
OCF Male	130	171	127	117	132	109	125	123	161	175	144
OCF Female	8	5	6	4	4	5	5	2	6	10	4
OCI	0	0	0	0	0	0	0	0	0	1,636	1,908
ORW Female	2591	2,521	2,477	2,298	2,228	1,845	1,954	1,754	1,767	1,696	1,774
OSP	562	520	541	517	519	560	455	468	491	512	593
PCI	2114	2,048	2,419	2,342	2,345	1,995	2,084	2,149	2,136	1,834	1,785
RCI	2583	2,547	2,586	2,530	2,516	2,217	2,269	2,236	2,248	2,202	2,289
RICI	2528	2,533	2,522	2,531	2,464	2,307	2,316	2,254	2,258	2,016	2,073
SCI	1553	1,537	1,628	1,515	1,512	1,437	1,534	1,590	1,383	1,352	1,368
SOCF	1470	1,415	1,388	1,487	1,327	1,087	959	1,047	1,382	1,449	1,435
TCI Male	1060	1,047	952	957	971	941	964	1,380	1,371	1,408	1,327
TCI Female	312	319	361	374	345	293	134	134	0	0	0
TOCI	1200	1,148	1,093	1,113	1,083	750	792	791	779	718	222
WCI	1391	1,406	1,398	1,395	1,330	1,059	1,042	1,025	1,075	1,144	1,258
TOTAL	50857	50,783	50,884	49,894	48,482	45,189	44,142	44,484	45,284	44,868	45,505

FIGURE 10. INSTITUTION POPULATION TREND 12/31/2010 - 2000



END OF THE YEAR INSTITUTIONAL POPULATION TREND FOR 12/31/99 THROUGH 12/31/89											
	1999	1998	1997	1996	1995	1994	1993	1992	1991	1990	1989
ACI	1,406	1,397	1,381	1,336	1415	1,481	1,355	1,105	1,007	975	885
BCI	2427	2,533	2,433	2,283	1891	224	0	0	0	0	0
CCI	2,244	2,731	2,714	2,580	2621	2,780	2,821	2,802	2,634	2,460	2,217
CMC Male	151	140	150	149	154	150	139	0	0	0	0
CMC Female	2	4	4	6	4	6	7	0	0	0	0
CRC	1,840	1,982	2,267	1,971	2074	2,204	2,318	2,207	2,223	1,423	1,540
DCI	460	467	489	485	484	478	484	485	481	454	469
EDP	0	0	0	0	0	0	0	0	0	343	385
FPRC	407	453	475	489	500	435	429	364	354	1,012	925
GCI	1,601	1,587	1,658	1,622	1590	1,596	1,435	1,289	1,161	0	0
HCI/HCF	438	441	446	432	436	417	446	395	392	396	321
LaECI	0	0	0	0	0	0	0	0	0	0	0
LCI	1,530	1,907	2,009	2,082	2110	2,051	1,954	1,902	1,909	1,848	1,726
LECI	1,976	2,221	2,273	2,105	2198	2,139	2,196	2,188	1,939	1,948	1,935
LOCI	1,885	1,901	1,877	1,896	2366	2,335	2,400	2,394	2,447	1,484	0
LORCI	1,606	2,053	2,062	2,003	1863	2,327	2,329	2,175	1,905	2,250	2,173
MACI	2,290	2,613	2,545	2,530	2311	2,315	2,312	2,069	1,942	1,696	1,697
MANCI	2,469	2,637	2,669	2,598	2637	2,320	2,455	2,341	2,119	1,411	0
MCI	1,918	2,206	21,111	2,109	2093	2,207	2,307	2,104	1,856	1,775	1,937
MEPRC	306	340	347	324	349	337	0	0	0	0	0
NCCI	2,258	2,314	2,316	2,216	2274	724	0	0	0	0	0
NCCTF	0	0	0	0	0	0	0	0	0	0	0
NCI	1,854	2,344	2,377	1,452	0	0	0	0	0	0	0
NEPRC	546	592	643	633	645	613	659	611	491	340	413
OCF Female	6	7	7	9	0	0	0	0	0	0	0
OCF Male	158	173	163	162	229	97	0	0	0	0	0
OCI	1,917	2,000	2,039	2,139	2245	2,340	2,280	2,257	2,266	2,135	2,053
ORW Female	1,845	1,830	1,682	1,642	1594	1,490	1,443	1,389	1,412	1,213	1,569
ORW Male	0	0	0	0	0	209	249	0	0	0	0
OSP	643	492	0	0	0	0	0	0	0	0	2,131
PCI	1,883	1,940	1,920	1,919	1923	1,942	1,942	1,912	1,792	1,536	1,518
RCI	2,398	2,805	2,797	2,767	2618	2,813	2,892	2,646	2,372	2,222	1,920
RICI	2,267	102	0	0	0	0	0	0	0	0	0
SCI/SOTC	1,679	1,726	1,742	1,819	1751	2,044	1,905	2,018	1,705	1,533	1,466
SOCF	1,456	1,425	1,425	1304	1076	1,060	1,093	1,831	1,637	1,829	2,133
TCI MALE	1,409	1,447	1,446	1,424	1375	973	948	83	0	0	0
TCI FEMAL	0	0	0	0	0	0	0	0	0	0	0
TOCI	0	0	0	0	0	0	0	0	0	0	0
WCI	1,344	1,361	1,336	1,476	1,512	1,502	1,455	1,424	1,402	1,218	887
TOTAL	46,619	48,171	47,808	45,962	44,338	41,609	40,253	37,991	35,446	31,501	30,300

FIGURE 11. INSTITUTION POPULATION TREND 1999-1989

