



Department of  
Rehabilitation & Correction

John R. Kasich, Governor  
Gary C. Mohr, Director

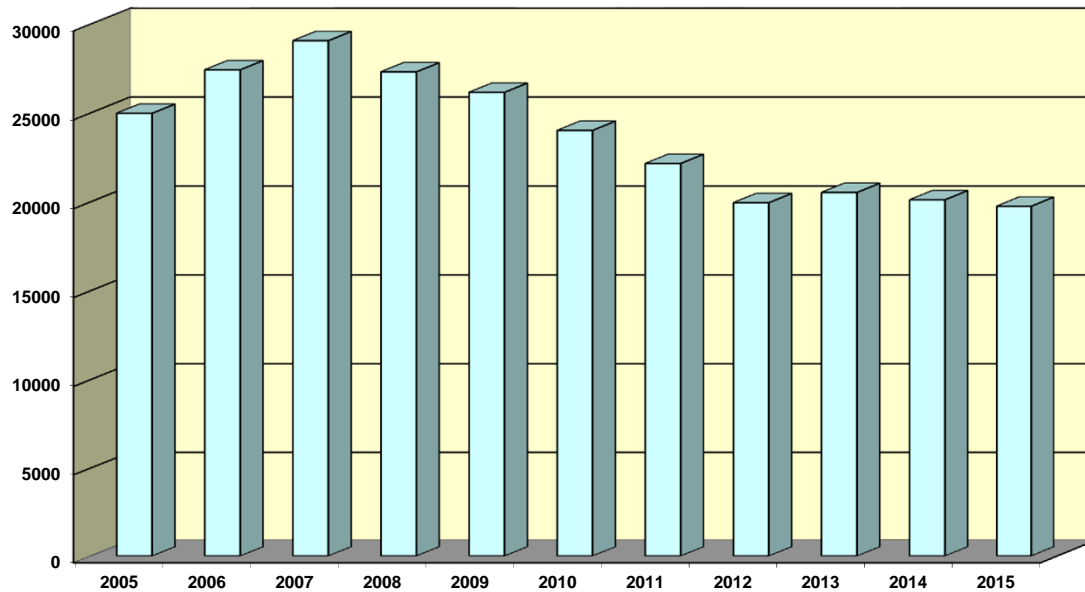
www.drc.ohio.gov

770 West Broad Street  
Columbus, OH 43222  
614 752 1276

TO:	ALL CONCERNED					
FROM:	SENARATH DASSANAYAKA, SENIOR RESEARCHER BUREAU OF RESEARCH AND EVALUATION					
DATE:	10/16/2015					
SUBJECT:	FISCAL YEAR 2015 SUMMARY OF INSTITUTION STATISTICS					
<i>TOTAL COURT COMMITMENTS TO THE OHIO DEPARTMENT OF REHABILITATION AND CORRECTION</i>						
	<b>OFFICIAL COMMITMENT TOTALS</b>	<b>NUMBER</b>	<b>PERCENT</b>		<b>NUMBER</b>	<b>PERCENT</b>
	CRC RECEPTION - MALE	9848	49.85	MALE INTAKE	16952	85.81
	LORCI RECEPTION - MALE	7104	35.96	FEMALE INTAKE	2803	14.19
	ORW RECEPTION - FEMALE	2803	14.19	<b>TOTAL</b>	<b>19755</b>	<b>100.00</b>
	<b>TOTAL</b>	<b>19755</b>	<b>100.00</b>			

COURT COMMITMENTS TO THE DEPARTMENT FY 2005-2015											
Year	2005	2006	2007	2008	2009	2010	2011	2012	2013	2014	2015
Total Commitments	24985	27431	29069	27315	26165	24023	22162	19957	20533	20120	19755
% Diff. from Prev. Yea	0.04%	9.79%	5.97%	-6.03%	-4.21%	-8.19%	-7.75%	-9.95%	2.89%	-2.01%	-1.81%

FIGURE 1. COURT COMMITMENTS TO THE DEPARTMENT  
FY 2005-2015



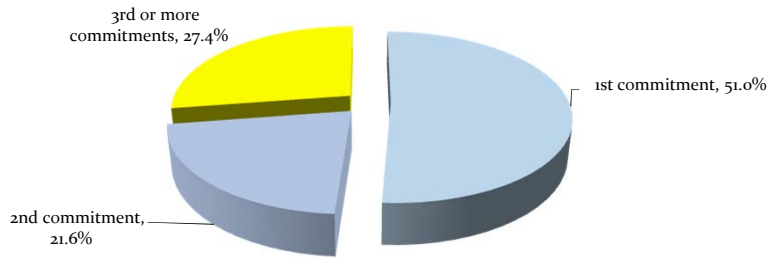
NUMBER OF COMMITMENTS TO THE DEPARTMENT								
	CRC	LORCI	MALE	MALE	ORW	FEMALE	TOTAL	TOTAL
FY 2015*	MALE	MALE	N	%	FEMALE	N	%	%
1ST COMMITMENTS	4,818	3,262	8,080	47.7%	1,989	71.0%	10,069	51.0%
2ND COMMITMENTS	2,194	1,573	3,767	22.2%	509	18.2%	4,276	21.6%
3RD OR MORE COM	2,836	2,269	5,105	30.1%	305	10.9%	5,410	27.4%
<b>TOTAL</b>	<b>9,848</b>	<b>7,104</b>	<b>16,952</b>	<b>100.0%</b>	<b>2,803</b>	<b>100.0%</b>	<b>19,755</b>	<b>100.0%</b>

NUMBER OF COMMITMENTS TO THE DEPARTMENT								
	CRC	LORCI	MALE	MALE	ORW	FEMALE	TOTAL	TOTAL
FY 2014*	MALE	MALE	N	%	FEMALE	%	N	%
1ST COMMITMENTS	5,210	3,140	8,350	48.3%	2,041	72.4%	10,391	51.6%
2ND COMMITMENTS	2,282	1,531	3,813	22.0%	450	16.0%	4,263	21.2%
3RD OR MORE COM	2,872	2,267	5,139	29.7%	327	11.6%	5,466	27.2%
<b>TOTAL</b>	<b>10,364</b>	<b>6,938</b>	<b>17,302</b>	<b>100.0%</b>	<b>2,818</b>	<b>100.0%</b>	<b>20,120</b>	<b>100.0%</b>

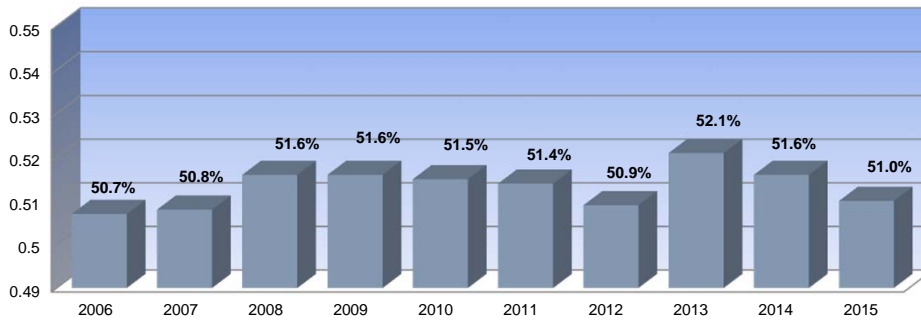
NUMBER OF COMMITMENTS TO THE DEPARTMENT								
	CRC	LORCI	MALE	MALE	ORW	FEMALE	TOTAL	TOTAL
FY 2013*	MALE	MALE	N	%	FEMALE	%	N	%
1ST COMMITMENTS	5,234	3,446	8,680	48.9%	2,017	72.0%	10,697	52.1%
2ND COMMITMENTS	2,304	1,573	3,877	21.9%	476	17.0%	4,353	21.2%
3RD OR MORE COM	2,844	2,332	5,176	29.2%	307	11.0%	5,483	26.7%
<b>TOTAL</b>	<b>10,382</b>	<b>7,351</b>	<b>17,733</b>	<b>100.0%</b>	<b>2,800</b>	<b>100.0%</b>	<b>20,533</b>	<b>100.0%</b>

\* THIS TABLE IS PRODUCED FROM A DOTS SUMMARY OF PRIOR OHIO COMMITMENTS.

**FIGURE 2. DISTRIBUTION OF COURT COMMITMENTS  
FY 2015**

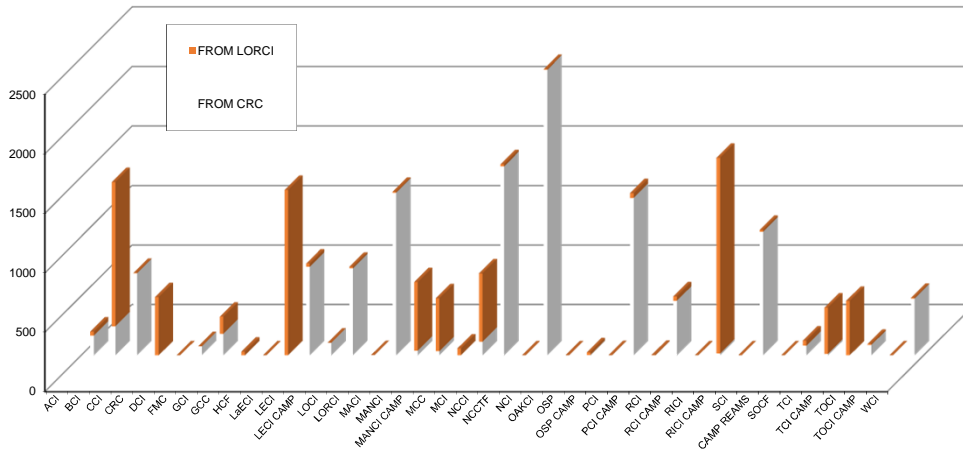


**FIGURE 3. PERCENT OF INMATES SERVING  
A FIRST COMMITMENT - FY 2006-2015**



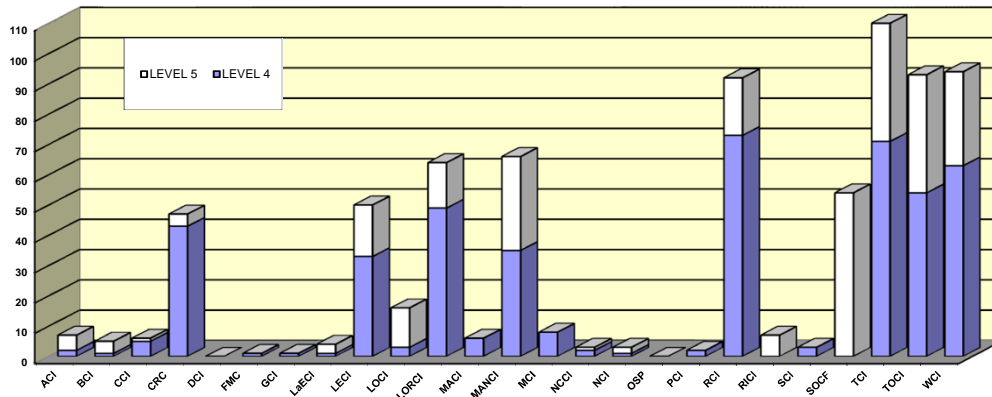
INMATE TRANSFERS FROM MALE RECEPTION CENTERS								
	FROM CRC RECEPTION TO:				FROM LORCI RECEPTION TO:			
	2015	2014	2013	2012	2015	2014	2013	2012
ACI/OAKCI	166	124	84	172	34	44	26	24
BCI	244	761	168	539	1213	946	1391	1,445
CCI	691	797	463	315	4	2	3	8
CRC	0	0	0	0	490	487	9	23
DCI	0	0	8	0	0	0	0	0
FMC	77	9	5	161	1	1	0	1
GCI	182	127	94	14	144	115	152	45
GCI CAMP	0	20	9	0	31	105	9	0
HCF/See SCI for 2015	0	45	51	63	0	0	0	22
LaECI	0	32	0	0	1391	1353	1373	1,090
LECI	747	667	431	257	27	33	48	28
LECI CAMP	106	89	65	90	0	8	0	0
LOCI	734	706	855	702	12	31	36	23
LORCI	2	4	5	1	0	0	0	0
MACI	1,367	1228	1461	1195	9	26	369	423
MANCI	39	10	11	53	579	462	424	351
MANCI CAMP	35	44	56	0	445	363	399	385
MCC	0	0	0	0	57	0	0	103
MCI	114	24	15	7	576	839	876	761
NCI	1,589	1702	1639	1306	18	3	17	494
NCCTF	0	0	0	0	0	0	0	303
NCI	2,400	2341	2055	2266	6	9	131	0
OCF	0	0	0	2	0	0	0	3
OSP	3	1	7	1	22	5	7	3
OSP CAMP	0	0	0	0	1	0	0	224
PCI	1,323	1261	1299	1227	41	31	25	17
PCI CAMP	0	0	0	0	3	1	0	1
RCI	459	487	709	402	38	21	95	21
RCI CAMP	0	0	0	0	0	0	0	0
RICI	16	51	0	0	1645	1580	1655	1,628
RICI CAMP	0	0	0	0	0	4	24	3
SCI	1,040	907	1084	1183	16	50	38	65
CAMP REAMS	0	0	4	6	0	0	0	0
SOCF	81	59	29	26	44	33	10	36
TCI	12	6	1	9	391	168	420	179
TCI CAMP	0	0	0	0	458	508	40	0
TOCI	87	7	3	59	10	9	105	79
TOCI CAMP	0	0	0	0	0	40	1	0
WCI	477	271	255	228	8	13	9	17
<b>TOTAL</b>	<b>11,991</b>	<b>10866</b>	<b>10284</b>	<b>10284</b>	<b>7714</b>	<b>7290</b>	<b>7692</b>	<b>7,805</b>

FIGURE 4. INMATES RECEIVED FROM CRC AND LORCI - FY 2015



DISCIPLINARY AND ADMINISTRATIVE TRANSFERS								
Institution	FROM LESSER CUSTODY TO:				FROM HIGHER TO LESSER CUSTODY			
	LEVEL 5 (OSP)		LEVEL 4 (SOCF)		LEVEL 5 (OSP)		LEVEL 4 (SOCF)	
	2015	2014	2015	2014	2015	2014	2015	2014
ACI/OAKCI	5	7	2	0	1	0	0	0
BCI	4	0	1	1	2	0	0	0
CCI	1	0	5	5	0	0	0	0
CRC	4	1	43	46	3	26	39	8
DCI	0	0	0	0	0	0	0	0
FMC	0	0	1	0	1	2	0	1
GCI	0	1	1	1	0	0	0	1
LaECI	3	7	1	4	0	0	0	0
LECI	17	35	33	52	4	68	52	6
LOCI	13	0	3	6	0	0	0	0
LORCI	15	4	49	31	2	0	0	9
MACI	0	0	6	1	0	0	1	1
MANCI	31	19	35	133	3	84	31	18
MCI	0	1	8	5	0	0	0	0
NCCI	1	0	2	1	0	0	0	0
NCI	2	2	1	8	1	0	7	0
OSP	0	0	0	0	0	0	0	0
PCI	0	0	2	8	0	0	0	0
RCI	19	29	73	54	4	107	35	2
RICI	7	5	0	0	1	0	1	6
SCI/HCF	0	0	3	1	0	0	0	0
SOCF	54	50	0	0	102	0	0	39
TCI	39	39	71	54	4	25	22	10
TOCI	39	66	54	42	89	4	45	144
WCI	31	13	63	21	12	77	31	10
<b>TOTAL</b>	<b>285</b>	<b>279</b>	<b>457</b>	<b>474</b>	<b>229</b>	<b>393</b>	<b>264</b>	<b>255</b>

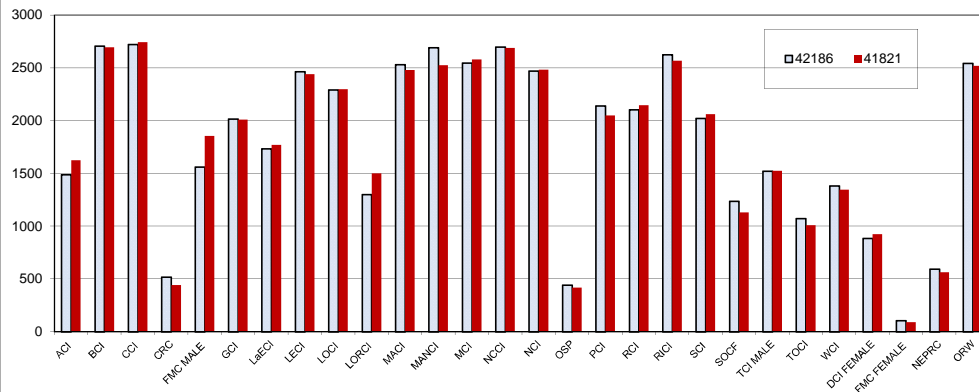
FIGURE 5. TRANSFERS TO LEVEL 5 (HIGH MAX) AND LEVEL 4 (MAXIMUM) CUSTODY IN FY 2015



**INSTITUTIONAL POPULATION TREND (PREVIOUS YEAR COMPARISON)**

INSTITUTION (MALE)		7/1/2015	7/1/2014	DIFFERENCE	
ACI/OAKC	(Allen Correctional Institution)	1489	1627	-138	-8.48%
BCI	(Belmont Correctional Institution)	2706	2695	11	0.41%
CCI	(Chillicothe Correctional Institution)	2722	2746	-24	-0.87%
CRC	(Correctional Reception Center)	1561	1855	-294	-15.85%
FMC MALL	(Franklin Medical Center)	518	444	74	16.67%
GCI	(Grafton Correctional Institution)	2016	2010	6	0.30%
LaECI	(Lake Erie Correctional Institution)	1733	1772	-39	-2.20%
LECI	(Lebanon Correctional Institution)	2465	2440	25	1.02%
LOCI	(London Correctional Institution)	2290	2298	-8	-0.35%
LORCI	(Lorain Correctional Institution)	1300	1502	-202	-13.45%
MACI	(Madison Correctional Institution)	2532	2481	51	2.06%
MANCI	(Mansfield Correctional Institution)	2691	2526	165	6.53%
MCI	(Marion Correctional Institution)	2545	2580	-35	-1.36%
NCCI	(North Central Correctional Institution)	2698	2689	9	0.33%
NCI	(Noble Correctional Institution)	2470	2483	-13	-0.52%
OSP	(Ohio State Penitentiary)	442	420	22	5.24%
PCI	(Pickaway Correctional Institution)	2139	2050	89	4.34%
RCI	(Ross Correctional Institution)	2102	2148	-46	-2.14%
RICI	(Richland Correctional Institution)	2626	2569	57	2.22%
SCI/HCF	(Southeastern Correctional Institution)	2022	2061	-39	-1.89%
SOCF	(Southern Ohio Correctional Facility)	1236	1130	106	9.38%
TCI	(Trumbull Correctional Institution)	1522	1527	-5	-0.33%
TOCI	(Toledo Correctional Institution)	1071	1010	61	6.04%
WCI	(Warren Correctional Institution)	1380	1348	32	2.37%
<b>MALE TOTAL</b>		<b>46276</b>	<b>46411</b>	<b>-135</b>	<b>-0.29%</b>
INSTITUTION (FEMALE)		7/1/2015	7/1/2014	DIFFERENCE	
DCI	(Dayton Correctional Institution)	884	925	-41	-4.43%
FMC	(Franklin Medical Center)	105	91	14	15.38%
NEPRC	(Northeast Pre-Release Center)	594	564	30	5.32%
ORW	(Ohio Reformatory for Women)	2544	2519	25	0.99%
<b>FEMALE TOTAL</b>		<b>4127</b>	<b>4099</b>	<b>28</b>	<b>0.68%</b>
<b>COMBINED MALE / FEMALE TOTAL</b>		<b>50403</b>	<b>50510</b>	<b>-107</b>	<b>-0.21%</b>

**FIGURE 6. COMPARISON OF INSTITUTION POPULATION COUNT 7/1/15 and 7/1/14**

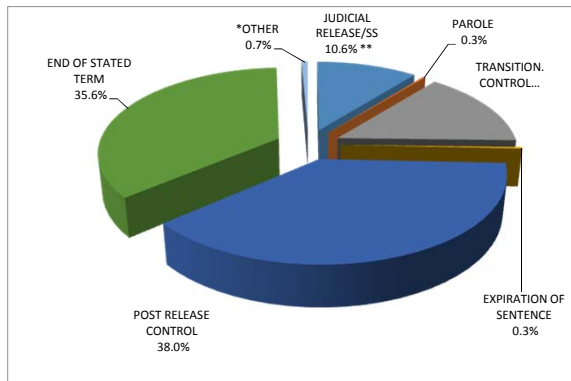


**RELEASES AND RETURNS - FY 2015:**

<b>INSTITUTIONAL STATISTICS</b>						
	FY 2015	FY 2015	GRAND	FY 2014	FY 2013	FY 2012
	MALE	FEMALE	TOTAL	TOTAL	TOTAL	TOTAL
<b>RELEASED BY:</b>						
SUSPENDED SENTENCE	6	0	6	8	11	2
VACATED SENTENCE	1	0	1	0	1	17
REGULAR PAROLE	55	2	57	45	137	111
SHOCK PAROLE	0	0	0	0	0	1
JUDICIAL RELEASE	1841	529	2370	2360	2382	2621
POST RELEASE CONTROL	7895	596	8491	8766	8475	7595
TRANSITIONAL CONTROL	2785	457	3242	3315	2855	2875
EXPIRATION OF SENTENCE	66	1	67	46	33	323
END OF STATED TERM	6697	1262	7959	7772	7813	9153
APPEALS BOND	11	4	15	20	13	19
ESCAPES AND WALKAWAYS (from the Office of Prisons)	3	0	3	3	1	1
DEATHS (from the Bureau of Medical Services)	121	8	129	128	122	125
<b>TOTAL RELEASED</b>	<b>19481</b>	<b>2859</b>	<b>22340</b>	<b>22463</b>	<b>21843</b>	<b>22843</b>
<b>RETURNED BY:</b>						
PAROLE VIOLATION (TECH.) <sup>1</sup>	47	1	48	63	55	68
JUDICIAL RELEASE VIOLATION	550	122	672	606	750	643
POST RELEASE CONTROL VIOLATION <sup>1</sup>	1439	82	1521	1080	750	725
TRANSITIONAL CONTROL VIOLATION	251	42	293	341	379	343
REACTIVATED SUSPENDED SENTENCE	0	0	0	3	2	2
ESCAPES RETURNED	3	0	3	4	4	9
APPEALS BOND	16	1	17	13	8	13
<b>TOTAL RETURNED</b>	<b>2306</b>	<b>248</b>	<b>2554</b>	<b>2110</b>	<b>1948</b>	<b>1803</b>
<sup>1</sup> Numbers from DOTS. PRC and Parole offenders being held at reception prior to a violation hearing have caused errors in the monthly report totals, so monthly totals are not summed for this report.						
<b>PAROLE VIOLATORS RECOMMISSIONED<sup>2</sup></b>	<b>8</b>	<b>0</b>	<b>8</b>	<b>21</b>	<b>37</b>	<b>106</b>
<b>PRC FELONY VIOLATOR<sup>2</sup></b>	<b>1624</b>	<b>58</b>	<b>1682</b>	<b>1629</b>	<b>1231</b>	<b>931</b>

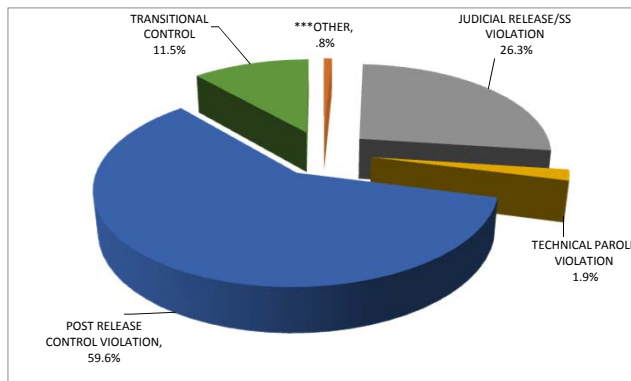
<sup>2</sup> PVR and PRC Felony Violator numbers from DOTS.

**FIGURE 7. RELEASE TYPES - FY 2015**



\*Other includes the following releases: Vacated sentence, Appeal bonds, Escapes and Deaths.  
 \*\*Includes offenders released on suspended sentence.

**FIGURE 8. RETURN TYPES - FY 2015**

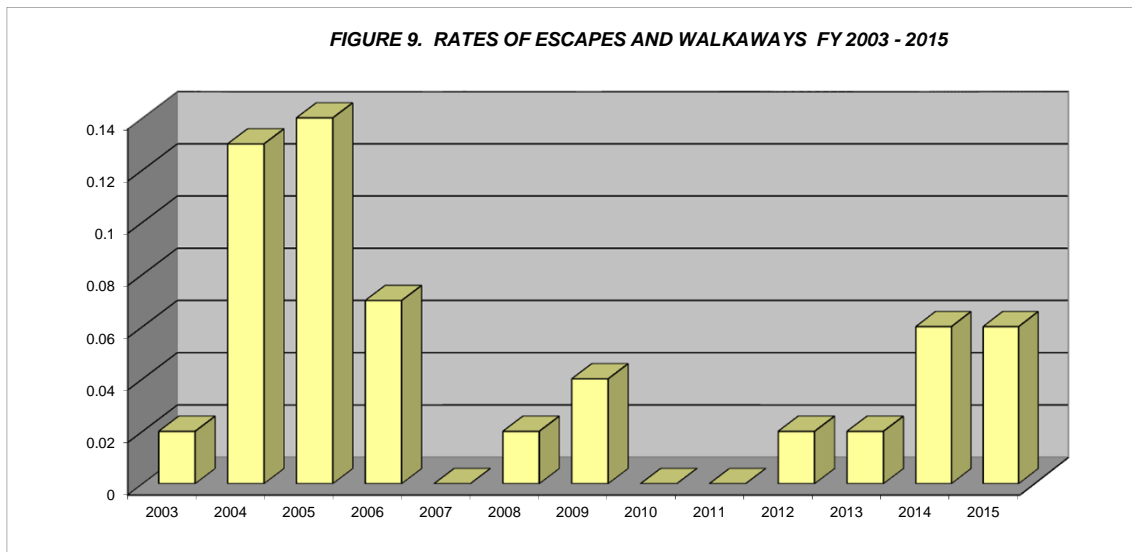


\*\*\*Other includes returns for the following:  
 Return from appeals bond and Captured escapes

ESCAPES AND RATES OF ESCAPES AND WALKAWAYS													
INSTITUT	2003	2004	2005	2006	2007	2008	2009	2010	2011	2012	2013	2014	2015
AOCI	0	0	0	0	0	0	0	0	0	0	0	0	3
BCI	0	0	0	0	0	0	1	0	0	0	0	0	0
CCI	0	0	0	0	0	0	0	0	0	0	0	0	0
CMC	0	0	0	0	0	0	0	0	0	0	0	0	0
CRC	0	0	0	0	0	0	0	0	0	0	0	0	0
DCI	0	0	1	0	0	0	0	0	0	0	0	0	0
FMC	0	0	0	0	0	0	0	0	0	0	0	1	0
GCI	1	0	0	0	0	0	0	0	0	0	0	0	0
HCI	0	0	0	0	0	0	0	0	0	0	0	0	0
LaECI	0	0	0	0	0	0	0	0	0	0	0	0	0
LECI	0	0	0	1	0	0	0	0	0	0	1*	0	0
LOCI	0	0	0	0	0	0	0	0	0	0	0	1*	0
LORCI	0	0	0	0	0	0	1	0	0	0	0	0	0
MACI	0	0	0	0	0	0	0	0	0	0	0	0	0
MANCI	0	1	1	0	0	0	0	0	0	1*	0	1	0
MCI	0	0	0	0	0	0	0	0	0	0	0	0	0
MEPRC	0	0	1	0	0	0	0	0	0	0	0	0	0
NEPRC	0	0	0	0	0	0	0	0	0	0	0	0	0
NCCI	0	0	0	0	0	0	0	0	0	0	0	0	0
NCCTF	0	0	0	0	0	0	0	0	0	0	0	0	0
NCI	0	0	0	0	0	0	0	0	0	0	0	0	0
OCF	0	0	0	0	0	0	0	0	0	0	0	0	0
OCI	0	0	0	0	0	0	0	0	0	0	0	0	0
ORW	0	0	0	0	0	0	0	0	0	0	0	0	0
OSP	0	0	1	0	0	0	0	0	0	0	0	0	0
PCI	0	3	0	2	0	0	0	0	0	0	0	0	0
RCI	0	1	2	0	0	0	0	0	0	0	0	0	0
RICI	0	0	0	0	0	0	0	0	0	0	0	0	0
SCI	0	1	0	0	0	1	0	0	0	0	0	0	0
SOCF	0	0	0	0	0	0	0	0	0	0	0	0	0
TCI	0	0	0	0	0	0	0	0	0	0	0	0	0
TOCI	0	0	0	0	0	0	0	0	0	0	0	0	0
WCI	0	0	0	0	0	0	0	0	0	0	0	0	0
<b>TOTAL</b>	<b>1</b>	<b>6</b>	<b>6</b>	<b>3</b>	<b>0</b>	<b>1</b>	<b>2</b>	<b>0</b>	<b>0</b>	<b>1</b>	<b>1</b>	<b>3</b>	<b>3</b>
<b>AVG. SYSTEM POPULATION</b>													
<b>FOR YEAR</b>	<b>45175</b>	<b>44527</b>	<b>44026</b>	<b>45203</b>	<b>48415</b>	<b>49926</b>	<b>50910</b>	<b>50980</b>	<b>50871</b>	<b>50129</b>	<b>49918</b>	<b>50504</b>	<b>50475</b>
<b>RATE OF ESCAPES AND WALKAWAYS PER 1000 IN</b>	<b>0.02</b>	<b>0.13</b>	<b>0.14</b>	<b>0.07</b>	<b>0.00</b>	<b>0.02</b>	<b>0.04</b>	<b>0.00</b>	<b>0.00</b>	<b>0.02</b>	<b>0.02</b>	<b>0.06</b>	<b>0.06</b>

\* This is a walkaway

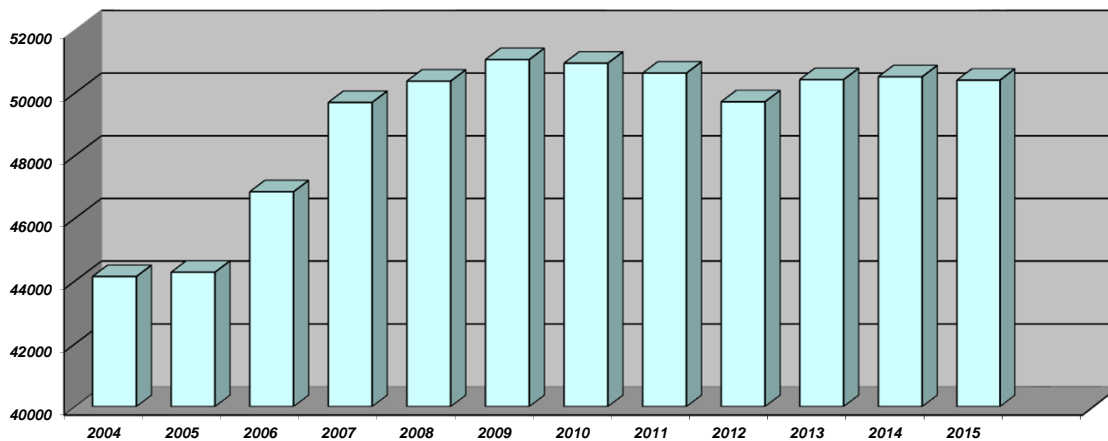
FIGURE 9. RATES OF ESCAPES AND WALKAWAYS FY 2003 - 2015



**END OF THE YEAR INSTITUTIONAL POPULATION TREND FOR JULY 1, 2003 THROUGH JULY 1, 2015**

	2003	2004	2005	2006	2007	2008	2009	2010	2011	2012	2013	2014	2015
ACI/OAKCI	1227	1282	1320	1,326	1348	1300	1350	1355	1341	1612	1597	1627	1,489
BECI	2,120	2,148	2,184	2,507	2659	2700	2663	2656	2649	2662	2722	2695	2,706
CCI	2,579	2,655	2,751	2,861	2901	2893	2879	2897	2908	2479	2783	2746	2,722
CRC	1,916	1,602	1,751	1,860	1863	1712	1449	1462	1488	1701	1785	1855	1,561
DCI MALE	459	412	410	413	464	476	472	791	755	0	0	0	0
DCI FEMAL	0	0	0	0	0	0	0	0	0	860	880	925	884
FMC MALE	106	110	98	112	119	117	142	117	119	438	318	444	518
FMC FEMA	6	4	10	5	4	3	7	4	4	85	85	91	105
FPRC	457	460	484	482	495	482	484	467	463	0	0	0	0
GCI	1,346	1,424	1,405	1,433	1435	1522	1512	1490	1522	1886	2008	2010	2,016
HCF See SC	447	460	464	468	475	484	486	483	481	451	0	0	0
LaECI	1,388	1,373	1,378	1,476	1457	1483	1487	1482	1501	1757	1754	1772	1,733
LCI	496	0	0	0	0	0	0	0	0	0	0	0	0
LECI	1,728	1,952	1,963	2232	2253	2587	2710	2795	2816	2585	2639	2440	2,465
LOCI	2,027	2,054	2,047	2189	2153	2542	2539	2533	2255	2249	2311	2298	2,290
LORCI	1,954	1,298	1,479	1923	2028	1531	1994	1777	1606	1428	1423	1502	1,300
MACI	2,110	2,056	1,957	2056	2067	2232	2301	2328	2356	2310	2198	2481	2,532
MANCI	2,373	2,353	2,378	2260	2407	2414	2514	2524	2486	2477	2498	2526	2,691
MCI	1,712	1,663	1,787	1922	2093	2234	2260	2275	2639	2570	2588	2580	2,545
MEPRC	328	319	345	347	347	321	321	0	0	0	0	0	0
NEPRC	600	577	532	582	577	583	581	577	518	533	605	564	594
NCCI	2,199	2,240	2,303	2275	2313	2343	2280	2320	2334	2664	2655	2689	2,698
NCCTF	533	530	546	604	602	658	659	687	700	0	0	0	0
NCI	1,964	2,149	2,103	2346	2364	2448	2473	2448	2429	2390	2562	2483	2,470
OCF MALE	131	114	119	108	121	137	159	185	194	0	0	0	0
OCF FEMAL	0	1	3	3	7	4	5	9	4	0	0	0	0
ORW	1,827	1,969	1,857	2,023	2369	2386	2471	2635	2862	2316	2431	2519	2,544
ORW MALE	0	0	0	0	0	0	0	0	0	0	0	0	0
OSP	505	460	466	535	519	538	535	547	596	602	462	420	442
PCI	2,251	2,152	1,960	2043	2363	2478	2436	2089	2146	2186	2145	2050	2,139
RCI	2,333	2,228	2,261	2294	2563	2467	2547	2570	2121	2191	2036	2148	2,102
RICI	2,238	2,273	2,291	2411	2524	2534	2495	2560	2521	2538	2538	2569	2,626
SCI/HCF	1,563	1,636	1,583	1467	1595	1540	1595	1553	1569	1549	2062	2061	2,022
SOCF	1,230	978	984	1141	1417	1448	1297	1432	1395	1256	1302	1130	1,236
TCI MALE	1,396	1,365	963	956	956	940	1056	1036	1065	1069	1332	1527	1,522
TCI FEMAL	0	0	254	358	388	390	346	311	0	0	0	0	0
TOCI	797	789	787	803	1092	1102	1154	1150	1378	1446	1292	1010	1,071
WCI	1056	1048	1047	1018	1353	1342	1401	1399	1406	1423	1408	1348	1,380
<b>TOTAL</b>	<b>45402</b>	<b>44134</b>	<b>44270</b>	<b>46839</b>	<b>49691</b>	<b>50371</b>	<b>51060</b>	<b>50944</b>	<b>50627</b>	<b>49713</b>	<b>50419</b>	<b>50510</b>	<b>50,403</b>

**FIGURE 10. INSTITUTION POPULATION TREND FY 2003 - FY 2015**





END OF THE YEAR INSTITUTIONAL POPULATION TREND FOR JULY 1, 1992 THROUGH JULY 1, 2002											
	1992	1993	1994	1995	1996	1997	1998	1999	2000	2001	2002
ACI	1111	1171	1417	1404	1294	1375	1421	1401	1328	1152	1173
BCI	0	0	0	283	2252	2,355	2,650	2423	1,901	2040	2080
CCI	2,625	2,794	2,791	2620	2582	2,628	2,854	2,448	2,195	2246	2264
CRC	2,198	2,331	2,182	2240	2142	2,155	2,304	1,667	1,733	1558	1858
DCI MALE	480	493	481	484	485	486	483	474	473	472	474
FMC MALE	0	0	148	147	153	135	146	132	146	99	101
FMC FEMALE	0	0	0	5	8	5	5	3	2	5	2
FPRC	364	428	456	471	490	479	474	459	438	468	468
GCI	1,307	1,317	1,620	1575	1621	1,635	1,699	1,593	1,450	1342	1334
HCI/HCF	397	441	449	435	440	433	447	436	417	408	423
LaECI	0	0	0	0	0	0	0	0	999	1362	1369
LCI	1,923	1,974	1,897	1926	2125	1,990	1,937	1,650	1,549	1485	1566
LECI	1,911	2,192	2,202	2188	2103	2,225	2,307	2,192	1,875	1680	1625
LOCI	2,459	2,426	2,366	2311	2350	1,904	1,946	1,857	1,915	2069	2009
LORCI	2,163	2,313	2,337	2071	1993	2,041	2,116	1,676	1,548	1443	1632
MACI	2,088	2,111	2,599	2589	2552	2,483	2,601	2,471	2,093	2009	2063
MANCI	2,306	2,542	2,380	2230	2588	2,655	2,696	2,671	2,319	2109	2276
MCI	1,789	2,210	2,284	2224	2087	2,144	2,222	1,911	1,782	1837	1705
MEPRC	0	0	208	342	349	331	347	322	328	262	327
NEPRC	530	651	638	655	631	638	634	583	590	495	631
NCCI	0	0	0	2262	2252	2,226	2,312	2,280	2,145	1955	2080
NCCTF	0	0	0	0	0	0	0	0	549	554	567
NCI	0	0	0	0	0	2,128	2,397	2,054	2,014	1850	1854
OCF MALE	0	0	48	211	145	150	141	156	130	175	165
OCF FEMALE	0	0	0	0	0	0	5	9	8	5	8
OCI	2,266	2,285	2,396	2430	2242	2,056	2,038	1,935	1,920	1743	0
ORW	1,458	1,374	1,418	1531	1673	1,716	1,780	1,802	1,807	1726	1765
ORW MALES	0	241	249	190	0	0	0	0	0	0	0
OSP	0	0	0	0	0	0	285	616	610	558	508
OSR	0	0	0	0	0	0	0	0	0	0	0
PCI	1,972	2,028	1,890	1906	1956	1,950	1,959	1,920	1,903	1815	2057
RCI	2,506	2,687	2,834	2828	2731	2,771	2,751	2,508	2,359	2224	2114
RICI	0	0	0	0	0	0	0	1,238	2,183	2043	2271
SCI/SOTC	1,999	1,912	1,801	1797	1755	1,743	1,769	1,677	1,718	1332	1434
SOCF	1,832	1,073	1,160	1009	1176	1,410	1,481	1,436	1,409	1438	1399
TCI	0	940	955	1272	1389	1,442	1,457	1,429	1,411	1395	1429
TCI FEMALE	0	0	0	0	0	0	0	0	0	0	0
TOCI	0	0	0	0	0	0	0	0	0	696	766
WCI	1,432	1,462	1,578	1522	1472	1,306	1,365	1,377	1,290	1194	1120
<b>TOTAL</b>	<b>37,116</b>	<b>39,396</b>	<b>40,784</b>	<b>43,158</b>	<b>45,036</b>	<b>46,995</b>	<b>49,029</b>	<b>46,806</b>	<b>46537</b>	<b>45244</b>	<b>44917</b>

FIGURE 11. INSTITUTION POPULATION TREND FY 1992 - 2002

