



Offender Reentry in Ohio

Ted Strickland, Governor

April 2009

Terry J. Collins, Director

3rd Congressional District Fact Sheet

Reentry Initiatives within the District:

Montgomery County Ex-Offender Reentry Task Force

The Montgomery County Ex-Offender Reentry Task Force focuses on local reentry strategies for individuals returning home. The group has developed a comprehensive, five-year strategic plan that will address reentry issues for the offender population in such areas as housing, employment, legal issues, pre and post release services, treatment, and family services.

Reentry Career Alliance (RCA)

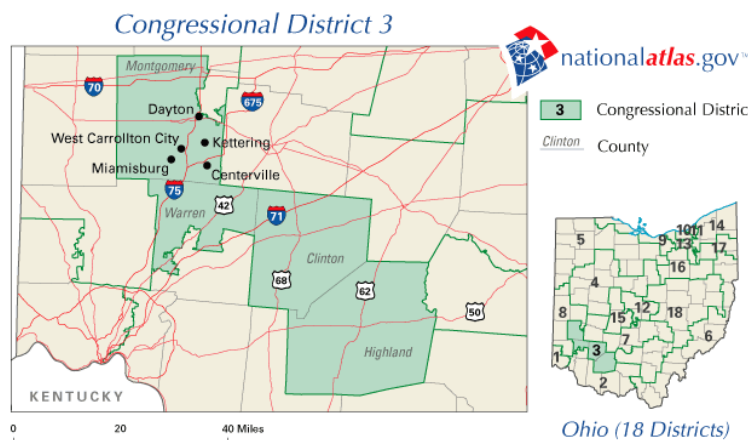
RCA offers career/employment-based workshop sessions for offenders in the Dayton and Troy Adult Parole Authority (APA) office locations. The workshops involve the collaborative efforts of the APA Offender Services Network, Parole Officers, Community Service Providers, and potential employers. The RCA program highlights valuable employment and career resource information. Guests presenters other linkage opportunities for participants that assist with career readiness, vocational educational training, and job placement services. The RCA group is coordinated by the APA Regional Reentry Specialist.

Ohio Citizen Circles

Circles create partnerships that promote positive interaction and accountability for offenders upon release. Membership provides an opportunity for citizens to communicate expectations to the offenders for successful reentry. Offenders are able demonstrate their personal strengths, begin the process of rebuilding social capital, be provided with the opportunity to perform community service, and begin repairing the harm their past behavior has caused others. There are twenty-nine (29) active Circles across Ohio which includes Montgomery and Warren Counties.

By the Numbers

	Clinton	Highland	Montgomery	Warren
Number of Commitments by County to ODRC Reception Centers Source: FY 2008 Commitment Report				
Male	112	114	1,323	250
Female	25	18	209	51
Total:	137	132	1,532	301
Number of Offenders Under Supervision with ODRC Source: Adult Parole Authority Jan. 2009 Monthly Report				
Total:	113	246	1,651	244



Ohio Prisons Snapshot

(as of April 2009)

- Incarcerated — 50,889
- Institutions — 32
- Capacity — 38,665
- Male — 92.45%
- Female — 7.55%
- Annual Admissions — 28,178
- Annual Releases — 29,014
- Average Cost Per Inmate
 - Daily = \$67.77
 - Annual = \$24,736.50

The Honorable Michael Turner
U.S. House of Representatives

Ohio.gov