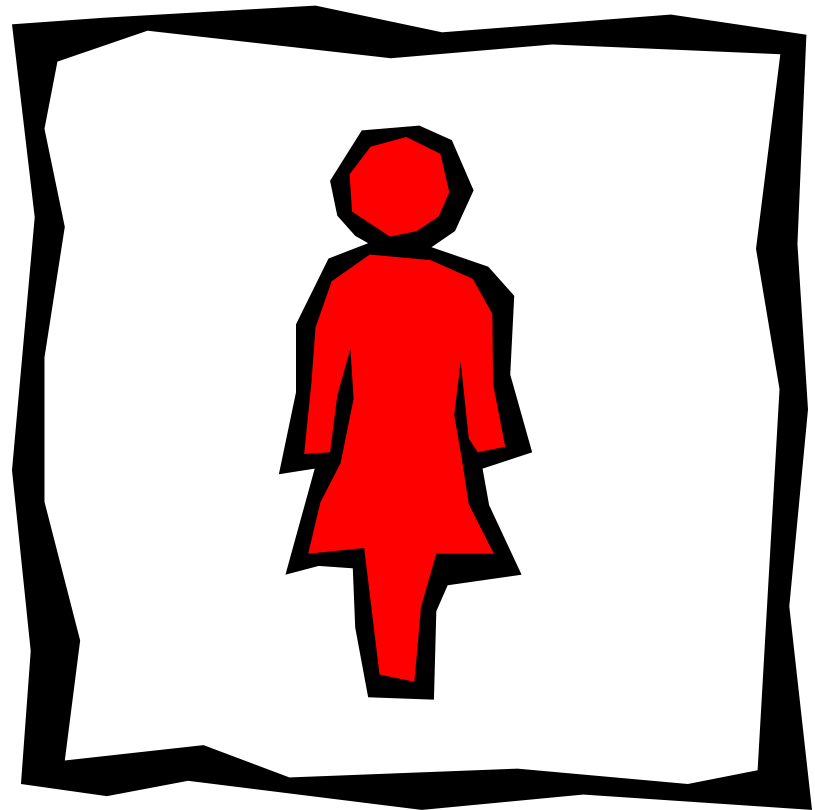


Facts Related to Sexual Assault

- Anyone, male or female can be sexually assaulted.
- A rapist can be a male or a female
- Age or physical attractiveness is not a factor.



Nobody “Asks To be Raped”!



- Sexual orientation is not a factor. A rapist may be either heterosexual or homosexual. The victims may be either heterosexual or homosexual.

Things to Remember!

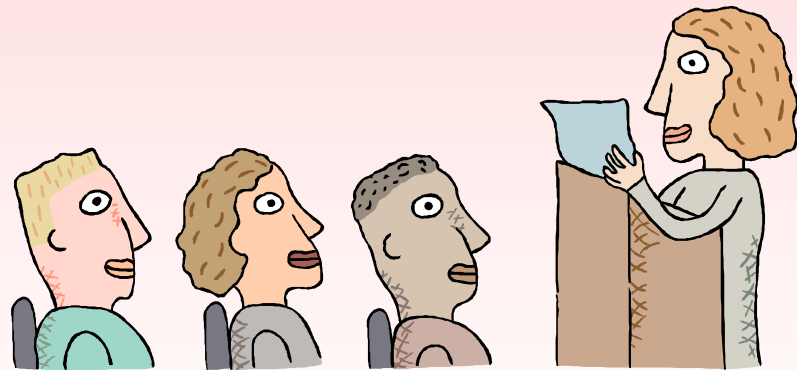
- **The victim of an assault is a “Victim” and is not at fault.**
- **Sexual assault is a crime of violence and has nothing whatsoever to do with lust or passion.**
- **In 2002 there were 247,730 victims of rape.**
- **Seven out of every eight rape victims were females.**
- **In 2001 only 39% of rapes and sexual assaults were reported to law enforcement officials. This represents only 1/3 of the actual cases were reported.**

Definition of Sexual Assault

- DRC Policy 79-ISA-01 defines sexual assault as “Any contact between the sex organ of one person and the sex organ, mouth, or anus of another person, or any intrusion of any part of the body of one person, or of any object into the sex organ, mouth or anus of another person, by the use of force or threat of force.” Sexual assault, per this definition, includes intercourse, anal and oral sex.

Female Inmates Can and Do Sexually Assault One Another!

- That is the very reason for this training. Female inmates have reported that physical force may be used, but more often the assaulter uses intimidation and emotional abuse to coerce another inmate into a sexual relationship.



Selecting a Victim



- Stronger women will seek out female inmates that appear weaker-physically and/or emotionally.
- Violence among female inmates is frequently similar to domestic violence situations.

Avoiding Sexual Assault

- Avoid isolated areas such as closets, stairwells, isolated restrooms, unoccupied restrooms, etc.
- Stay within eyesight of correctional staff whenever possible.
- Be aware of your body language.



Avoid secluded stairways



We understand that you may need to use the stairs when there is no one else present – but don't make it a habit to hang out on the stairs alone. Don't draw attention to the fact that you are there frequently by yourself.

Dangerzones!

Be sure that you do not
Hang out in secluded
areas such as
stairwells, restrooms,
closets, etc. You are
inviting unwanted
sexual advances by
doing so.



Be aware of your own body language!

Be sure that your body language and conversations do not give other inmates the wrong impressions. Avoid conversations that contain sexual topics (including jokes).



Inappropriate Relationships

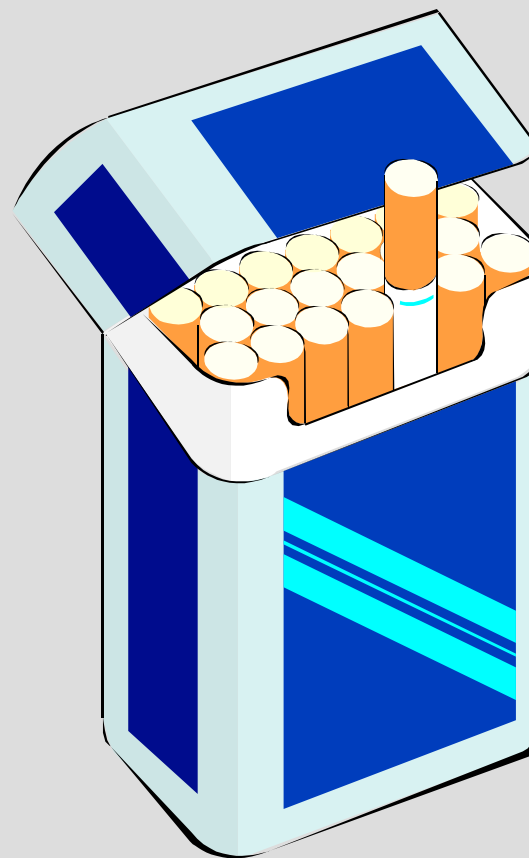


Be able to recognize and avoid:

Sexual advances from other inmates. Avoid conversations with other inmates about your family, your relationships, your sexual experiences, your financial status, and your emotions. Such conversations may be misinterpreted by another inmate to mean that you have an interest in developing a sexual relationship with them.

Don't Owe Anyone!

- Do not accept food, cigarettes, clothing or any other items from another inmate. Do not go into debt in any manner! You may be expected to repay a debt with sex!



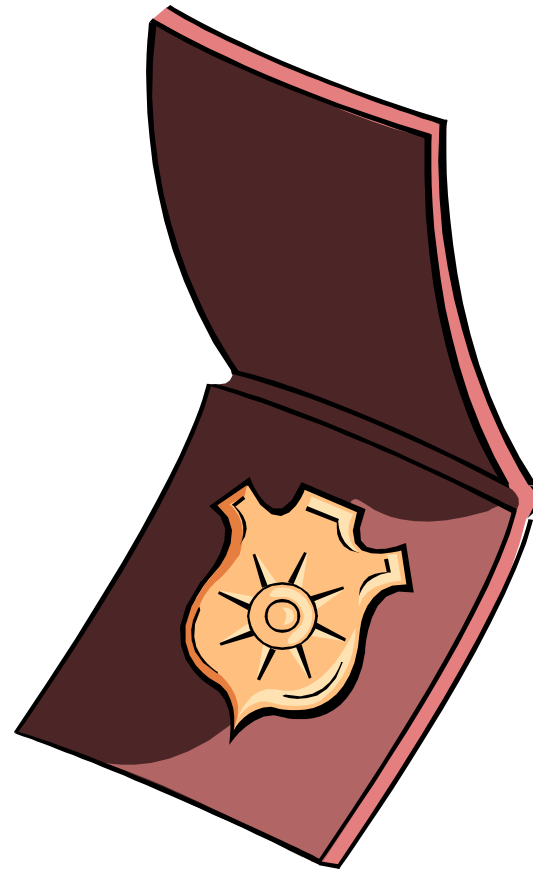
Beware of Paying for Protection!



- Beware of inmates that say they will protect you. Do not give out information about your family, friends or especially your financial support system. Do not purchase large amounts of commissary or give the impression of having money available to you.

Reporting Sexual Assault

- Immediately report any and all incidents of sexually oriented advances from another inmate to a staff member.
- Report the incident as soon as possible.
- Continue to report the incident to staff until action is taken. File a grievance with the IIS if necessary.



Report to Any Staff Member



- Every staff member is required to report any and all alleged sexual assaults to the proper authorities. Go to the staff member that you feel most comfortable reporting this to.

If you are Sexually Assaulted -

- Do not clean yourself
- Do not brush your teeth
- Do not Shower
- Do not change your clothes
- **Report the assault immediately!**

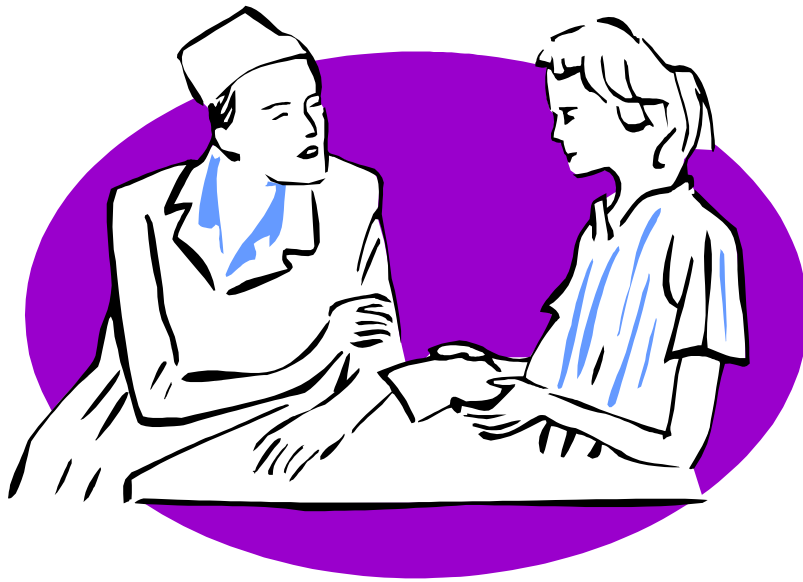


When you report the assault

- You will be medically checked.
- If the assault has occurred recently, you will be transported to a hospital.
- You will be examined for injuries and evidence may be collected.



FOLLOW-UP CARE



- **Once back at the institution, you will be referred to Mental Health professionals for assessment. Treatment will be provided as necessary.**

Sexual Assault is a Crime

- All reported sexual assaults will be reported to the OSHP. Each case will also be investigated by your institution's administrative staff to ensure that the person is punished for the crime committed against you.



If you are the inmate that sexually assaults other inmates -

- Know that the OSHP will conduct a criminal investigation and if you are convicted of a new felony offense that occurred while in prison, your new sentence will be added to your current sentence increasing your time to serve.
- Know that you will also receive a conduct report and if found guilty by RIB you will be subject to harsh sanctions including an increase in your security level.
- Know that the effect of your actions will have a great impact on your family, friends, children, husband, etc. Know that if found guilty of sexually assaulting another inmate, this will affect their ability to visit you.

Risk of Contracting STD

- Know that any sexual contact significantly increases your risk of contracting a sexually transmitted disease, ranging from genital herpes to HIV and AIDS.
- Remember that your actions will have severe consequences.